

Recombinant Cytokeratin 19 (KRT19) (Pancreatic Stem Cell Marker) Antibody

Mouse Monoclonal Antibody [Clone rKRT19/800]

Catalog No	Format	Size
3880-MSM8-P0	Purified Ab with BSA and Azide at 200ug/ml	20 ug
3880-MSM8-P1	Purified Ab with BSA and Azide at 200ug/ml	100 ug
3880-MSM8-P1ABX	Purified Ab WITHOUT BSA and Azide at 1.0mg/ml	100 ug

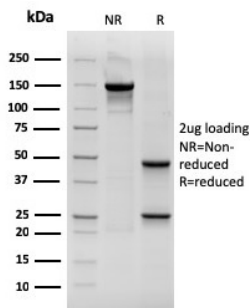
Applications	Tested Dillution	Note
Immunohistochemistry (IHC)	1-2ug/ml	30 min at RT. Staining of formalin-fixed tissues requires heating tissue sections in 10mM Tris with 1mM EDTA, pH 9.0, for 45 min at 95°C followed by cooling at RT for 20 minutes
Western Blot (WB)	2-4ug/ml	

Product Details

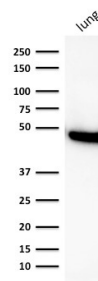
Clone	rKRT19/800
Gene Name	KRT19
Immunogen	Recombinant full-length human KRT19 protein
Host	Mouse
Clonality	Monoclonal
Isotype / Light Chain	IgG1 / Kappa
Mol. Weight of Antigen	40kDa
Species Reactivity	Human, Mouse, Rat
Positive Control	Breast cancer., HeLa cells, MCF-7.Skin.

*Optimal dilution for a specific application should be determined.

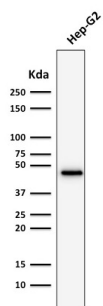
Product Images for Recombinant Cytokeratin 19 (KRT19) (Pancreatic Stem Cell Marker) Antibody



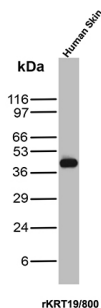
SDS-PAGE Analysis of Purified CK19 Mouse Recombinant Monoclonal Antibody (rKRT19/800). Confirmation of Integrity and Purity of Antibody.



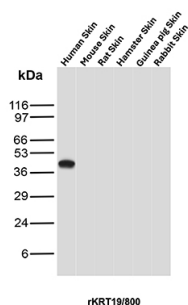
Western Blot Analysis of human lung lysate using CK19 Mouse Recombinant Monoclonal Antibody (rKRT19/800).



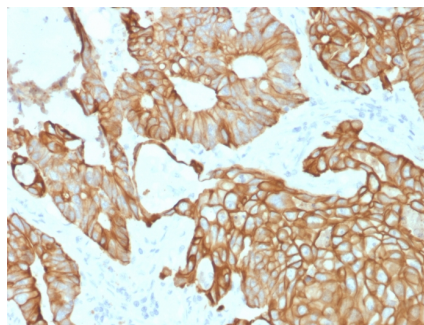
Western Blot Analysis of Hep-G2 cell lysate using CK19 Mouse Recombinant Monoclonal Antibody (rKRT19/800).



Western Blot Analysis of Human Skin tissue lysate using Cytokeratin 19 Mouse Recombinant Monoclonal Antibody (rKRT19/800).



Western Blot Analysis of Skin tissue lysates of different species using Cytokeratin 19 Mouse Recombinant Monoclonal Antibody (rKRT19/800).



Formalin-fixed, paraffin-embedded human Colon Carcinoma stained with CK19 Mouse Recombinant Monoclonal Antibody (rKRT19/800).

Specificity & Comments

Recognizes a protein of 40kDa, identified as cytokeratin-19 (CK19), which is expressed in sweat gland, mammary gland ductal and secretory cells, bile ducts, gastrointestinal tract, bladder urothelium, oral epithelia, esophagus, and ectocervical epithelium. Anti-CK19 reacts with a wide variety of epithelial malignancies including adenocarcinomas of the colon, stomach, pancreas, biliary tract, liver, and breast. Perhaps the most useful application is the identification of thyroid carcinoma of the papillary type, although 50%-60% of follicular carcinomas are also labeled. Anti-CK19 is a useful marker for detection of tumor cells in lymph nodes, peripheral blood, bone marrow and breast cancer.

Supplied As

200ug/ml of Ab produced in HEK293 cell mammalian-based expression system. Prepared in 10mM PBS with 0.05% BSA & 0.05% azide. Also available WITHOUT BSA & azide at 1.0mg/ml.

Storage and Stability

Antibody with azide - store at 2 to 8°C. Antibody without azide - store at -20 to -80°C. Antibody is stable for 24 months. Non-hazardous. No MSDS required.

Research Areas

Autophagy, Cardiovascular, Developmental Biology, Stem Cell Differentiation

Limitations and Warranty

This antibody is available for research use only and is not approved for use in diagnosis. There are no warranties, expressed or implied, which extend beyond this description. Company is not liable for any personal injury or economic loss resulting from this product.