

Cytokeratin 18 (KRT18) Antibody

Mouse Monoclonal Antibody [Clone B23.1]

Catalog No	Format	Size
3875-MSM9-P0	Purified Ab with BSA and Azide at 200ug/ml	20 ug
3875-MSM9-P1	Purified Ab with BSA and Azide at 200ug/ml	100 ug
3875-MSM9-P1ABX	Purified Ab WITHOUT BSA and Azide at 1.0mg/ml	100 ug

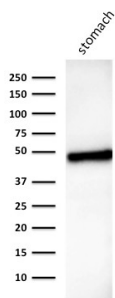
Applications	Tested Dillution	Note
Flow Cytometry (Flow)	1-2ug/million cells	
Immunofluorescence (IF)	1-3ug/ml	
Immunohistochemistry (IHC)	1-2ug/ml	30 min at RT. Staining of formalin-fixed tissues requires heating tissue sections in 10mM Tris with 1mM EDTA, pH 9.0, for 45 min at 95°C followed by cooling at RT for 20 minutes
Western Blot (WB)	2-4ug/ml	

Product Details

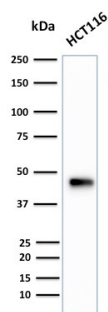
Clone	B23.1
Gene Name	KRT18
Immunogen	PMC-42 human breast carcinoma cells
Host	Mouse
Clonality	Monoclonal
Isotype / Light Chain	IgG1 / Kappa
Mol. Weight of Antigen	45kDa
Cellular Localization	Cytoplasm, Nucleolus, Nucleus, Perinuclear region
Species Reactivity	Human
Positive Control	A431 cells. Breast Cancer., HCT116, HeLa, MCF-7

*Optimal dilution for a specific application should be determined.

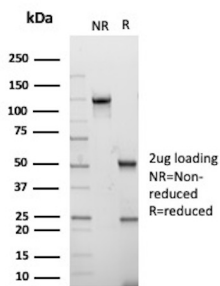
Product Images for Cytokeratin 18 (KRT18) Antibody



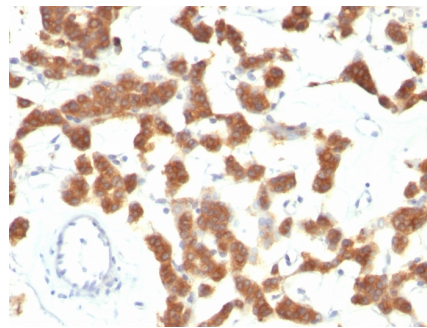
Western Blot analysis of human stomach lysate using Cytokeratin 18 Monoclonal Antibody (B23.1).



Western Blot Analysis of human HCT116 cell lysate using Cytokeratin 18 Monoclonal Antibody (B23.1).



SDS-PAGE Analysis of Purified KRT18 Mouse Monoclonal Antibody (B23.1).
Confirmation of Purity and Integrity of Antibody



Formalin-fixed, paraffin-embedded Thyroid Carcinoma stained with Cytokeratin 18 Monoclonal Antibody (B23.1).

Specificity & Comments

This MAb reacts with a wide variety of simple epithelia. It does not react with stratified squamous epithelia. It reacts with epithelial tumors of the gastrointestinal tract, lung, breast, pancreas, ovary, and thyroid. Cytokeratin 18, which belongs to the type A (acidic) subfamily of low molecular weight keratins, exists in combination with cytokeratin 8. It is reported that tissues from gastrointestinal tract are positive for both cytokeratin 8 and 18 but do not contain cytokeratin 14. Tissues from gastrointestinal tract, respiratory tract and urogenital tract, as well as endocrine and exocrine tissues and mesothelial cells are positive for cytokeratin 18.

Limitations and Warranty

This antibody is available for research use only and is not approved for use in diagnosis. There are no warranties, expressed or implied, which extend beyond this description. Company is not liable for any personal injury or economic loss resulting from this product.

Supplied As

200ug/ml of Ab Purified from Bioreactor Concentrate by Protein A/G. Prepared in 10mM PBS with 0.05% BSA & 0.05% azide. Also available WITHOUT BSA & azide at 1.0mg/ml.

Storage and Stability

Antibody with azide - store at 2 to 8°C. Antibody without azide - store at -20 to -80°C. Antibody is stable for 24 months. Non-hazardous. No MSDS required.

Research Areas

Autophagy, Developmental Biology