

Recombinant Cytokeratin 16 (KRT16) (Suprabasal Keratinocyte Marker) Antibody

Rabbit Monoclonal Antibody [Clone KRT16/2043R]

Catalog No	Format	Size
3868-RBM3-P0	Purified Ab with BSA and Azide at 200ug/ml	20 ug
3868-RBM3-P1	Purified Ab with BSA and Azide at 200ug/ml	100 ug
3868-RBM3-P1ABX	Purified Ab WITHOUT BSA and Azide at 1.0mg/ml	100 ug

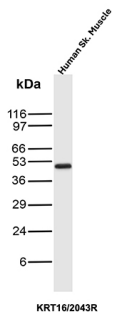
Applications	Tested Dillution	Note
Immunohistochemistry (IHC)	1-2ug/ml	30 min at RT. Staining of formalin-fixed tissues requires heating tissue sections in 10mM Tris with 1mM EDTA, pH 9.0, for 45 min at 95°C followed by cooling at RT for 20 minutes
Western Blot (WB)	2-4ug/ml	

Product Details

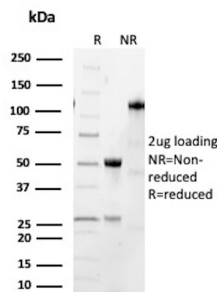
Clone	KRT16/2043R
Gene Name	KRT16
Immunogen	Recombinant fragment from the C-terminal of human Cytokeratin 16
Host	Rabbit
Clonality	Monoclonal
Isotype / Light Chain	IgG / Kappa
Mol. Weight of Antigen	48kDa
Species Reactivity	Human
Positive Control	HeLa cells. Tonsil, Skin. Bladder or Cervix. Human Sk. Muscle

*Optimal dilution for a specific application should be determined.

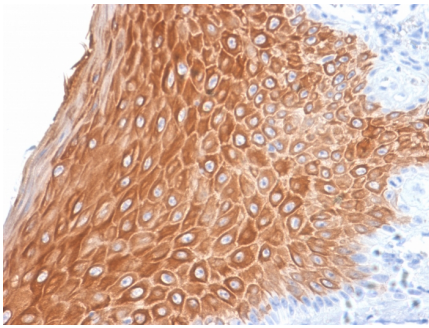
Product Images for Recombinant Cytokeratin 16 (KRT16) (Suprabasal Keratinocyte Marker) Antibody



Western blot analysis of Human Sk. Muscle tissue lysate using Cytokeratin 16 Recombinant Rabbit Monoclonal Antibody (KRT16/2043R).



SDS-PAGE Analysis of Purified Keratin, type I cytoskeletal 16 Recombinant Rabbit Monoclonal Antibody (KRT16/2043R). Confirmation of Purity and Integrity of Antibody.



Formalin-fixed, paraffin-embedded human Skin stained with Cytokeratin 16 Rabbit Recombinant Monoclonal Antibody (KRT16/2043R).

Specificity & Comments

Cytokeratins are a family of intermediate filament proteins that assemble into filaments through forming heterodimers of one type I Cytokeratins (Cytokeratins 9 to 23) and one type II Cytokeratins (keratins 1 to 8). The cytokeratin proteins play a critical role in differentiation, as well as tissue specialization and function, to maintain the overall structural integrity of epithelial cells. Cytokeratins are also useful markers in identifying the origin of metastatic tumors. Cytokeratin 16 is expressed in benign stratified squamous epithelium and squamous cell carcinoma of the head and neck, as well as luminal cells of mammary gland and sweat ducts. It is absent in non-invasive breast carcinomas and normal breast tissue.

Limitations and Warranty

This antibody is available for research use only and is not approved for use in diagnosis. There are no warranties, expressed or implied, which extend beyond this description. Company is not liable for any personal injury or economic loss resulting from this product.

Supplied As

200ug/ml of Ab Purified from Bioreactor Concentrate by Protein A/G. Prepared in 10mM PBS with 0.05% BSA & 0.05% azide. Also available WITHOUT BSA & azide at 1.0mg/ml.

Storage and Stability

Antibody with azide - store at 2 to 8°C. Antibody without azide - store at -20 to -80°C. Antibody is stable for 24 months. Non-hazardous. No MSDS required.

Research Areas

Autophagy, Developmental Biology
