



Recombinant Cytokeratin 15 (Esophageal Squamous Cell Carcinoma Marker) Antibody

Rabbit Monoclonal Antibody [Clone KRT15/2103R]

Catalog No	Format	Size
3866-RBM3-P0	Purified Ab with BSA and Azide at 200ug/ml	20 ug
3866-RBM3-P1	Purified Ab with BSA and Azide at 200ug/ml	100 ug
3866-RBM3-P1ABX	Purified Ab WITHOUT BSA or Azide at 1.0mg/ml	100 ug

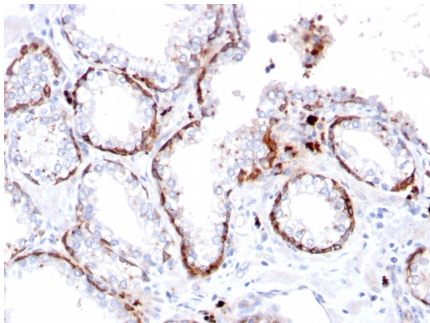
Applications	Tested Dillution	Note
Immunohistochemistry (IHC)	1-2ug/ml	30 min at RT. Staining of formalin-fixed tissues requires heating tissue sections in 10mM Tris with 1mM EDTA, pH 9.0, for 45 min at 95°C followed by cooling at RT for 20 minutes
Western Blot (WB)	2-4ug/ml	

Product Details

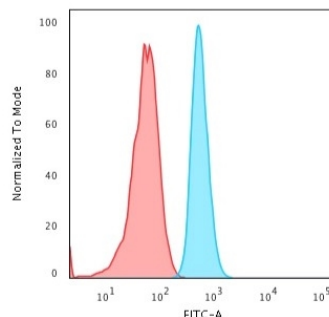
Clone	KRT15/2103R
Immunogen	Recombinant fragment corresponding to the c-terminal region of the human Cytokeratin 15 protein
Host	Rabbit
Clonality	Monoclonal
Isotype / Light Chain	IgG / Kappa
Mol. Weight of Antigen	49.21kDa
Species Reactivity	Human
Positive Control	A431 cells. Skin or Colon., HeLa

*Optimal dilution for a specific application should be determined.

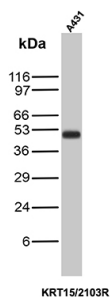
Product Images for Recombinant Cytokeratin 15 (Esophageal Squamous Cell Carcinoma Marker) Antibody



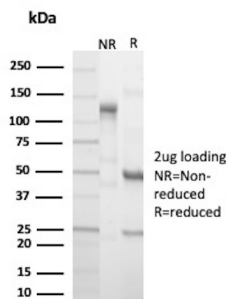
Formalin-fixed, paraffin-embedded human prostate stained with Cytokeratin 15 Rabbit Recombinant Monoclonal Antibody (KRT15/2103R).



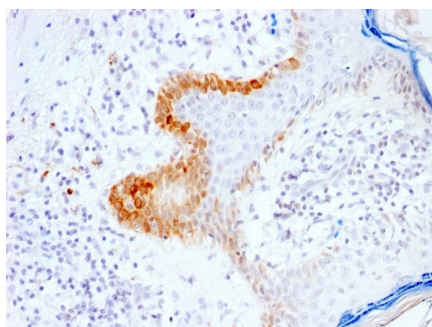
Flow Cytometric Analysis of HeLa cells. KRT15 Rabbit Recombinant Monoclonal Antibody (KRT15/2103R) followed by goat anti-rabbit IgG-CF488 (blue); isotype control (red).



Western blot analysis of A431 cell lysate using Cytokeratin 15 Recombinant Rabbit Monoclonal Antibody (KRT15/2103R).



SDS-PAGE Analysis of Purified Keratin, type I cytoskeletal 15 Recombinant Rabbit Monoclonal Antibody (KRT15/2103R). Confirmation of Purity and Integrity of Antibody.



Formalin-fixed, paraffin-embedded human skin stained with Cytokeratin 15 Rabbit Recombinant Monoclonal Antibody (KRT15/2103R).

Specificity & Comments

Keratin 15 is a type I keratin which is expressed only in basal keratinocytes in stratified epithelia and does not appear to have a natural type II expression partner. KRT15 is downregulated in activated keratinocytes. It is a specific marker of stem cells of the hair-follicle bulge and may be a useful marker for diagnosis between basal cell carcinoma (BCC) and trichoepithelioma. Trichoblastoma are benign neoplasms of follicular differentiation frequently found in nevus sebaceous. Many morphologic features are shared with nodular basal cell carcinoma, sometimes rendering a diagnosis difficult. Trichoblastoma and BCC show variable expression of Cytokeratin 15 and Cytokeratin 19, and absence of hair keratins.

Limitations and Warranty

This antibody is available for research use only and is not approved for use in diagnosis. There are no warranties, expressed or implied, which extend beyond this description. Company is not liable for any personal injury or economic loss resulting from this product.

Supplied As

200ug/ml of Ab produced in a mammalian-based expression system. Prepared in 10mM PBS with 0.05% BSA & 0.05% azide. Also available WITHOUT BSA & azide at 1.0mg/ml.

Storage and Stability

Antibody with azide - store at 2 to 8 °C. Antibody without azide - store at -20 to -80 °C. Antibody is stable for 24 months. Non-hazardous. No MSDS required.