

Cytokeratin 15 (Esophageal Squamous Cell Carcinoma Marker) Antibody

Mouse Monoclonal Antibody [Clone LHK15]

Catalog No	Format	Size
3866-MSM1-P0	Purified Ab with BSA and Azide at 200ug/ml	20 ug
3866-MSM1-P1	Purified Ab with BSA and Azide at 200ug/ml	100 ug
3866-MSM1-P1ABX	Purified Ab WITHOUT BSA and Azide at 1.0mg/ml	100 ug

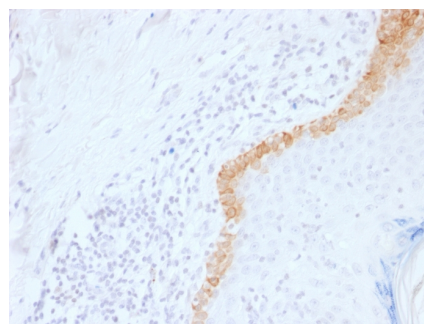
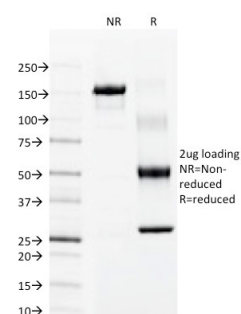
Applications	Tested Dillution	Note
Immunohistochemistry (IHC)	1-2ug/ml	30 min at RT. Staining of formalin-fixed tissues requires heating tissue sections in 10mM Tris with 1mM EDTA, pH 9.0, for 45 min at 95°C followed by cooling at RT for 20 minutes

Product Details

Clone	LHK15
Gene Name	KRT15
Immunogen	A 17 amino acids synthetic peptide from the C- terminal of Human Cytokeratin 15
Host	Mouse
Clonality	Monoclonal
Isotype / Light Chain	IgG2a / Kappa
Mol. Weight of Antigen	52kDa
Species Reactivity	Cow, Human, Rat
Positive Control	A431 cells. Skin or Colon.

**Optimal dilution for a specific application should be determined.*

Product Images for Cytokeratin 15 (Esophageal Squamous Cell Carcinoma Marker) Antibody



SDS-PAGE Analysis of Purified Cytokeratin 15 Mouse Monoclonal Antibody (LHK15). Confirmation of Integrity and Purity of Antibody

Formalin-fixed, paraffin-embedded human Skin stained with Cytokeratin 15 Mouse Monoclonal Antibody (LHK15).

Specificity & Comments

Keratin 15 is a type I keratin which is expressed only in basal keratinocytes in stratified epithelia and does not appear to have a natural type II expression partner. Keratin 15 is down regulated in activated keratinocytes. Cytokeratin 15 is a specific marker of stem cells of the hair-follicle bulge and may be a useful marker for diagnosis between basal cell carcinoma (BCC) and trichoepithelioma. Trichoblastoma are benign neoplasms of follicular differentiation frequently found in nevus sebaceous. Many morphologic features are shared with nodular basal cell carcinoma, sometimes rendering a diagnosis difficult. Trichoblastoma and BCC show variable expression of Cytokeratin 15 and Cytokeratin 19, and absence of hair keratins.

Supplied As

200ug/ml of Ab purified from Bioreactor Concentrate by Protein A/G. Prepared in 10mM PBS with 0.05% BSA & 0.05% azide. Also available WITHOUT BSA & azide at 1.0mg/ml.

Storage and Stability

Antibody with azide - store at 2 to 8°C. Antibody without azide - store at -20 to -80°C. Antibody is stable for 24 months. Non-hazardous. No MSDS required.

Research Areas

Autophagy, Developmental Biology, Basal Cell Marker

Limitations and Warranty

This antibody is available for research use only and is not approved for use in diagnosis. There are no warranties, expressed or implied, which extend beyond this description. Company is not liable for any personal injury or economic loss resulting from this product.
