

Recombinant Cytokeratin 10 (KRT10) (Suprabasal Epithelial Marker) Antibody

Mouse Monoclonal Antibody [Clone rKRT10/844]

Catalog No	Format	Size
3858-MSM9-P0	Purified Ab with BSA and Azide at 200ug/ml	20 ug
3858-MSM9-P1	Purified Ab with BSA and Azide at 200ug/ml	100 ug
3858-MSM9-P1ABX	Purified Ab WITHOUT BSA and Azide at 1.0mg/ml	100 ug

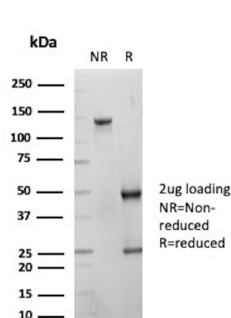
Applications	Tested Dillution	Note
Immunohistochemistry (IHC)	1-2ug/ml	30 min at RT. Staining of formalin-fixed tissues requires heating tissue sections in 10mM Tris with 1mM EDTA, pH 9.0, for 45 min at 95°C followed by cooling at RT for 20 minutes
Western Blot (WB)	2-4ug/ml	

Product Details

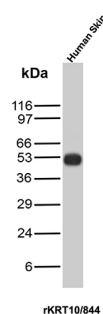
Clone	rKRT10/844
Gene Name	KRT10
Immunogen	Recombinant full-length human KRT10 protein.
Host	Mouse
Clonality	Monoclonal
Isotype / Light Chain	IgG1 / Kappa
Mol. Weight of Antigen	56.5kDa
Cellular Localization	Cell surface, Extracellular space, Secreted
Species Reactivity	Human, Mouse
Positive Control	A431, HeLa, MCF7 cells. Esophagus or tonsil. Skin.

**Optimal dilution for a specific application should be determined.*

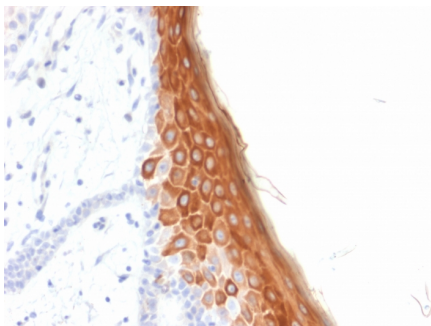
Product Images for Recombinant Cytokeratin 10 (KRT10) (Suprabasal Epithelial Marker) Antibody



SDS-PAGE Analysis of Purified Keratin, type I cytoskeletal 10 Recombinant Mouse Monoclonal Antibody (rKRT10/844). Confirmation of Purity and Integrity of Antibody.



Western blot analysis of Human Skin tissue lysate using Cytokeratin 10 Recombinant Mouse Monoclonal Antibody (rKRT10/844).



Formalin-fixed, paraffin-embedded human Skin stained with Cytokeratin 10 Mouse Recombinant Monoclonal Antibody (rKRT10/844).

Specificity & Comments

This MAb recognizes a protein of 56.5kDa, identified as cytokeratin 10 (CK10). CK10 is expressed in all suprabasal layers of the epidermis. In the epidermis, expression of CK10 strictly parallels the extent of differentiation; it is absent in the basal layer, appears in the first suprabasal layers and increases in concentration towards the granular layer. However, CK10 is rarely detected in early stages of vulvar squamous carcinomas (tumors less than 2 cm, clinical stage I) regardless of the tumor grade. In larger and more advanced tumors (greater than 2 cm, clinical stages II and III), CK10 is detected very frequently. Expression of CK10 is related to maturation of malignant keratinocytes, being preferentially detected in more-differentiated parts.

Supplied As

200ug/ml of Ab Purified from Bioreactor Concentrate by Protein A/G. Prepared in 10mM PBS with 0.05% BSA & 0.05% azide. Also available WITHOUT BSA & azide at 1.0mg/ml.

Storage and Stability

Antibody with azide - store at 2 to 8°C. Antibody without azide - store at -20 to -80°C. Antibody is stable for 24 months. Non-hazardous. No MSDS required.

Research Areas

Autophagy, Developmental Biology

Limitations and Warranty

This antibody is available for research use only and is not approved for use in diagnosis. There are no warranties, expressed or implied, which extend beyond this description. Company is not liable for any personal injury or economic loss resulting from this product.