

## Recombinant Cytokeratin 8 (KRT8) Antibody

Mouse Monoclonal Antibody [Clone rB22.1]

Catalog No	Format	Size
3856-MSM15-P0	Purified Ab with BSA and Azide at 200ug/ml	20 ug
3856-MSM15-P1	Purified Ab with BSA and Azide at 200ug/ml	100 ug
3856-MSM15-P1ABX	Purified Ab WITHOUT BSA and Azide at 1.0mg/ml	100 ug

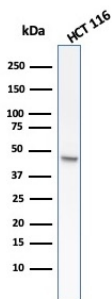
Applications	Tested Dillution	Note
Immunohistochemistry (IHC)	1-2ug/ml	30 min at RT. Staining of formalin-fixed tissues requires heating tissue sections in 10mM Tris with 1mM EDTA, pH 9.0, for 45 min at 95°C followed by cooling at RT for 20 minutes
Western Blot (WB)	2-4ug/ml	

### Product Details

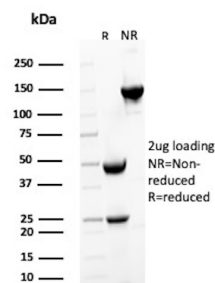
<b>Clone</b>	rB22.1
<b>Gene Name</b>	KRT8
<b>Immunogen</b>	Recombinant full-length human KRT8 protein
<b>Host</b>	Mouse
<b>Clonality</b>	Monoclonal
<b>Isotype / Light Chain</b>	IgG1 / Kappa
<b>Mol. Weight of Antigen</b>	52.5kDa
<b>Cellular Localization</b>	Cytoplasm, Nucleoplasm, Nucleus, Nucleus matrix
<b>Species Reactivity</b>	Cow, Human, Pig, Rabbit, Sheep
<b>Positive Control</b>	Colon, HCT116, lung or breast carcinoma., MCF-7 or A431 cells. Skin

\*Optimal dilution for a specific application should be determined.

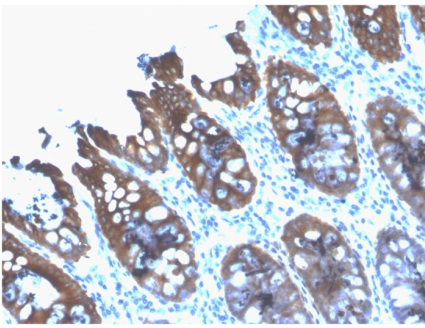
### Product Images for Recombinant Cytokeratin 8 (KRT8) Antibody



Western Blot analysis of HCT116 cell lysate using Cytokeratin 8 Mouse Monoclonal Antibody (rB22.1).



SDS-PAGE Analysis of Purified Keratin, type II cytoskeletal 8 Recombinant Mouse Monoclonal Antibody (rB22.1). Confirmation of Purity and Integrity of Antibody.



Formalin-fixed, paraffin-embedded human Colon stained with Cytokeratin 8 Mouse Recombinant Monoclonal Antibody (rB22.1).

---

### Specificity & Comments

Cytokeratin 8 (CK8) belongs to the type II (or B or basic) subfamily of high molecular weight cytokeratins and exists in combination with cytokeratin 18 (CK18). CK8 is primarily found in the non-squamous epithelia and is present in majority of adenocarcinomas and ductal carcinomas. It is absent in squamous cell carcinomas. Hepatocellular carcinomas are defined by the use of antibodies that recognize only cytokeratin 8 and 18. CK8 exists on several types of normal and neoplastic epithelia, including many ductal and glandular epithelia such as colon, stomach, small intestine, trachea, and esophagus as well as in transitional epithelium. Anti-CK8 does not react with skeletal muscle or nerve cells. Epithelioid sarcoma, chordoma, and adamantinoma show strong positivity corresponding to that of simple epithelia (with antibodies against CK8, CK18 and CK19). Reportedly, anti-CK8 is useful for the differentiation of lobular ('ring-like, perinuclear') from ductal ('peripheral-predominant') carcinoma of the breast.

---

### Limitations and Warranty

This antibody is available for research use only and is not approved for use in diagnosis. There are no warranties, expressed or implied, which extend beyond this description. Company is not liable for any personal injury or economic loss resulting from this product.

---

### Supplied As

200ug/ml of Ab Purified from Bioreactor Concentrate by Protein A/G. Prepared in 10mM PBS with 0.05% BSA & 0.05% azide. Also available WITHOUT BSA & azide at 1.0mg/ml.

---

### Storage and Stability

Antibody with azide - store at 2 to 8°C. Antibody without azide - store at -20 to -80°C. Antibody is stable for 24 months. Non-hazardous. No MSDS required.

---

### Research Areas

Autophagy, Developmental Biology

---