

Cytokeratin 7 (Glandular and Transitional Epithelial Marker) Antibody

Mouse Monoclonal Antibody [Clone KRT7/903]

Catalog No	Format	Size
3855-MSM3-P0	Purified Ab with BSA and Azide at 200ug/ml	20 ug
3855-MSM3-P1	Purified Ab with BSA and Azide at 200ug/ml	100 ug
3855-MSM3-P1ABX	Purified Ab WITHOUT BSA and Azide at 1.0mg/ml	100 ug

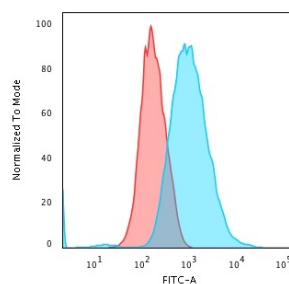
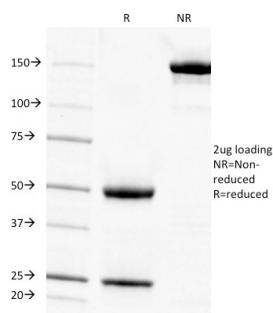
Applications	Tested Dillution	Note
Flow Cytometry (Flow)	1-2ug/million cells	
Immunofluorescence (IF)	1-3ug/ml	
Immunohistochemistry (IHC)	1-2ug/ml	30 min at RT. Staining of formalin-fixed tissues requires heating tissue sections in 10mM Tris with 1mM EDTA, pH 9.0, for 45 min at 95°C followed by cooling at RT for 20 minutes

Product Details

Clone	KRT7/903
Gene Name	KRT7
Immunogen	Recombinant full-length human KRT7 protein
Host	Mouse
Clonality	Monoclonal
Isotype / Light Chain	IgG1 / Kappa
Mol. Weight of Antigen	54kDa
Cellular Localization	Cytoplasm
Species Reactivity	Human
Positive Control	A431, Breast cancer., HeLa cells

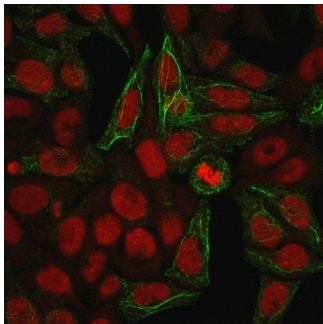
**Optimal dilution for a specific application should be determined.*

Product Images for Cytokeratin 7 (Glandular and Transitional Epithelial Marker) Antibody

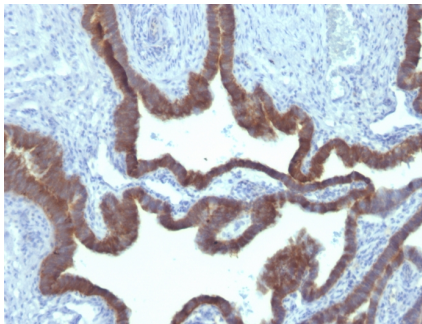


Purified Cytokeratin 7 Mouse Monoclonal Antibody (KRT7/903). Confirmation of Integrity and Purity of Antibody.

Flow Cytometric Analysis of trypsinized methanol-fixed HeLa cells using Cytokeratin 7 Mouse Monoclonal Antibody (KRT7/903) followed by goat anti-Mouse IgG-CF488 (Blue); Isotype Control (Red).



Immunofluorescence Analysis of methanol-fixed HeLa cells. Cytokeratin 7 Mouse Monoclonal Antibody (KRT7/903) followed by goat anti-Mouse IgG-CF488 (Green). The nuclear counterstain is Redot.



Formalin-fixed, paraffin-embedded human Ovarian Carcinoma stained with Cytokeratin 7 Mouse Monoclonal Antibody (KRT7/903)

Specificity & Comments

Cytokeratin 7 is a basic cytokeratin, which is found in most glandular and transitional epithelia but not in the stratified squamous epithelia. Keratin 7 is expressed in the epithelial cells of ovary, lung, and breast but not of colon, prostate, or gastrointestinal tract. Antibody to cytokeratin is useful in distinguishing ovarian carcinomas (keratin 7+) from colon carcinomas (keratin 7-).

Supplied As

200ug/ml of Ab Purified from Bioreactor Concentrate by Protein A/G. Prepared in 10mM PBS with 0.05% BSA & 0.05% azide. Also available WITHOUT BSA & azide at 1.0mg/ml.

Storage and Stability

Antibody with azide - store at 2 to 8°C. Antibody without azide - store at -20 to -80°C. Antibody is stable for 24 months. Non-hazardous. No MSDS required.

Research Areas

Autophagy, Developmental Biology

Limitations and Warranty

This antibody is available for research use only and is not approved for use in diagnosis. There are no warranties, expressed or implied, which extend beyond this description. Company is not liable for any personal injury or economic loss resulting from this product.