

Recombinant Cytokeratin 7 (Glandular and Transitional Epithelial Marker) Antibody

Mouse Monoclonal Antibody [Clone rOV-TL12/30]

Catalog No	Format	Size
3855-MSM11-P0	Purified Ab with BSA and Azide at 200ug/ml	20 ug
3855-MSM11-P1	Purified Ab with BSA and Azide at 200ug/ml	100 ug
3855-MSM11-P1ABX	Purified Ab WITHOUT BSA and Azide at 1.0mg/ml	100 ug

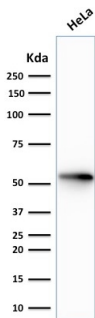
Applications	Tested Dillution	Note
Flow Cytometry (Flow)	1-2ug/million cells	
Immunohistochemistry (IHC)	1-2ug/ml	30 min at RT. Staining of formalin-fixed tissues requires heating tissue sections in 10mM Tris with 1mM EDTA, pH 9.0, for 45 min at 95°C followed by cooling at RT for 20 minutes
Western Blot (WB)	2-4ug/ml	

Product Details

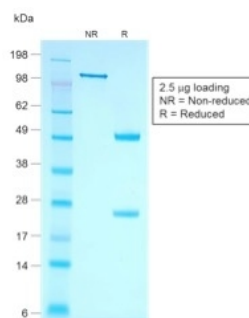
Clone	rOV-TL12/30
Gene Name	KRT7
Immunogen	Recombinant full-length human KRT7 protein
Host	Mouse
Clonality	Monoclonal
Isotype / Light Chain	IgG1 / Kappa
Mol. Weight of Antigen	55kDa
Cellular Localization	Cytoplasm
Species Reactivity	Human
Positive Control	cervix or breast., HeLa cells. Carcinoma of ovary, Lung

*Optimal dilution for a specific application should be determined.

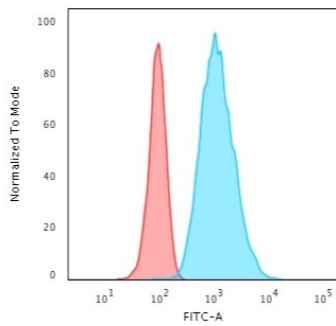
Product Images for Recombinant Cytokeratin 7 (Glandular and Transitional Epithelial Marker) Antibody



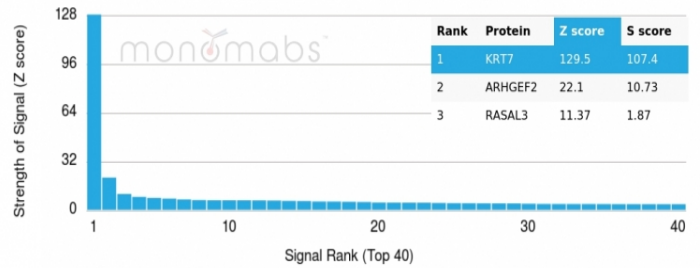
Western Blot Analysis of human HeLa cell lysate using CK7 Recombinant Mouse Monoclonal Antibody (rOV-TL12/30).



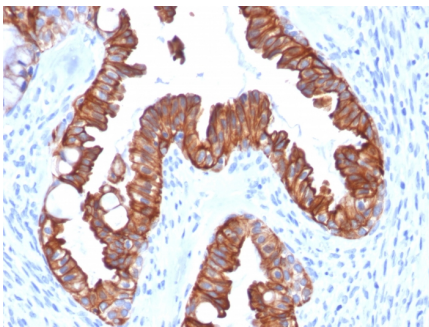
SDS-PAGE Analysis Purified CK7 Recombinant Mouse Monoclonal Antibody (rOV-TL12/30). Confirmation of Purity and Integrity of Antibody.



Flow Cytometric Analysis of HeLa cells using CK7 Recombinant Mouse Monoclonal Antibody (rOV-TL12/30) followed by Goat anti-Mouse IgG-CF488 (Blue); Isotype Control (Red).



Analysis of Protein Array containing more than 19,000 full-length human proteins using Cytokeratin 7 Monospecific Recombinant Mouse Monoclonal Antibody (rOV-TL12/30). Z- and S- Score: The Z-score represents the strength of a signal that a monoclonal antibody (MAb) (in combination with a fluorescently-tagged anti-IgG secondary antibody) produces when binding to a particular protein on the HuProt™ array. Z-scores are described in units of standard deviations (SD's) above the mean value of all signals generated on that array. If targets on HuProt™ are arranged in descending order of the Z-score, the S-score is the difference (also in units of SD's) between the Z-score. S-score therefore represents the relative target specificity of a MAb to its intended target. A MAb is considered to be specific to its intended target, if the MAb has an S-score of at least 2.5. For example, if a MAb



Formalin-fixed, paraffin-embedded human endometrial carcinoma stained with CK7 Recombinant Mouse Monoclonal Antibody (rOV-TL12/30).

Specificity & Comments

It recognizes an intermediate filament protein (IFP) of 55kDa, which is identified as cytokeratin 7. This MAb is highly specific to cytokeratin 7 and shows no cross-reaction with other IFPs. Cytokeratin 7 is a basic cytokeratin, which is found in most glandular and transitional epithelia but not in the stratified squamous epithelia. Keratin 7 is expressed in the epithelial cells of ovary, lung, and breast but not of colon, prostate, or gastrointestinal tract. This MAb is highly useful in distinguishing ovarian carcinomas (keratin 7+) from colon carcinomas (keratin 7-).

Supplied As

200ug/ml of Ab produced in HEK293 cell mammalian-based expression system. Prepared in 10mM PBS with 0.05% BSA & 0.05% azide. Also available WITHOUT BSA & azide at 1.0mg/ml.

Storage and Stability

Antibody with azide - store at 2 to 8°C. Antibody without azide - store at -20 to -80°C. Antibody is stable for 24 months. Non-hazardous. No MSDS required.

Research Areas

Autophagy, Developmental Biology

Limitations and Warranty

This antibody is available for research use only and is not approved for use in diagnosis. There are no warranties, expressed or implied, which extend beyond this description. Company is not liable for any personal injury or economic loss resulting from this product.