

## Recombinant Cytokeratin 5 (KRT5) (Basal, Myoepithelial & Mesothelial Cell Marker) Antibody

Rabbit Monoclonal Antibody [Clone KRT5/6399R]

Catalog No	Format	Size
3852-RBM8-P0	Purified Ab with BSA and Azide at 200ug/ml	20 ug
3852-RBM8-P1	Purified Ab with BSA and Azide at 200ug/ml	100 ug
3852-RBM8-P1ABX	Purified Ab WITHOUT BSA and Azide at 1.0mg/ml	100 ug

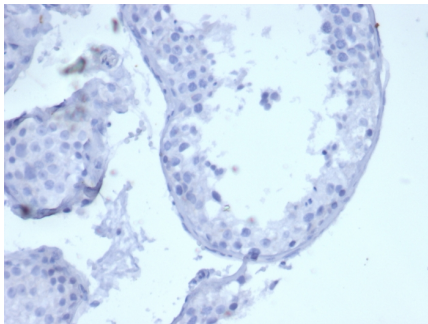
Applications	Tested Dillution	Note
Immunohistochemistry (IHC)	1-2ug/ml	30 min at RT. Staining of formalin-fixed tissues requires heating tissue sections in 10mM Tris with 1mM EDTA, pH 9.0, for 45 min at 95°C followed by cooling at RT for 20 minutes
Western Blot (WB)	2-4ug/ml	

### Product Details

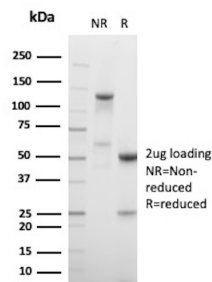
<b>Clone</b>	KRT5/6399R
<b>Gene Name</b>	KRT5
<b>Immunogen</b>	Recombinant fragment (around aa 316-590) of human Cytokeratin 5 (KRT5) protein (exact sequence is proprietary)
<b>Host</b>	Rabbit
<b>Clonality</b>	Monoclonal
<b>Isotype / Light Chain</b>	IgG / Kappa
<b>Mol. Weight of Antigen</b>	58kDa
<b>Species Reactivity</b>	Human
<b>Positive Control</b>	esophagus or bladder tissue (IHC)., Human tonsil, Skin

\*Optimal dilution for a specific application should be determined.

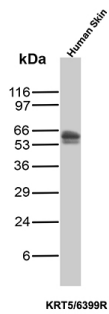
### Product Images for Recombinant Cytokeratin 5 (KRT5) (Basal, Myoepithelial & Mesothelial Cell Marker) Antibody



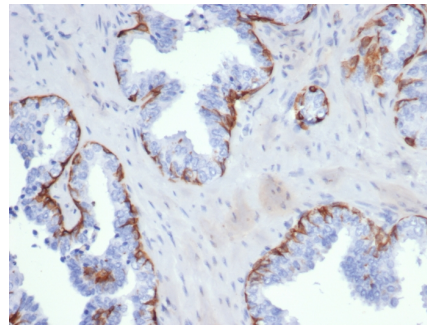
IHC analysis of formalin-fixed, paraffin-embedded human brain. Negative tissue control using KRT5/6399R at 2ug/ml in PBS for 30min RT. HIER: Tris/EDTA, pH9.0, 45min. 2 °: HRP-polymer, 30min. DAB, 5min.



SDS-PAGE Analysis of Purified KRT5 Recombinant Rabbit Monoclonal Antibody (KRT5/6399R). Confirmation of Purity and Integrity of Antibody.



Western blot analysis of Human Skin tissue lysate using Cytokeratin 5 Rabbit Recombinant Monoclonal Antibody (KRT5/6399R).



Formalin-fixed, paraffin-embedded human prostate carcinoma stained with Cytokeratin 5 Rabbit Recombinant Monoclonal Antibody (KRT5/6399R).

### Specificity & Comments

This Mab recognizes a protein of 58kDa, which is identified as Cytokeratin 5 (KRT5). This type II cytoke­ratin is specifically expressed in the basal layer of the epidermis with family member KRT14. Antibodies to KRT5 identify basal cells of squamous and glandular epithelia, yoepithelial, and mesothelium. Anti-cytokeratin 5 has been reported useful in the differential diagnosis of metastatic carcinoma in the pleura versus epithelioid mesothelioma. Almost all squamous cell carcinomas, half of transitional carcinomas, and many undifferentiated large cell carcinomas express. Anti-KRT5, along with anti-p63, affords a high sensitivity and specificity for squamous differentiation. Myoepithelial cells of the breast, glandular epithelia, and basal cells of the prostate are labeled with anti-KRT5.

### Limitations and Warranty

This antibody is available for research use only and is not approved for use in diagnosis. There are no warranties, expressed or implied, which extend beyond this description. Company is not liable for any personal injury or economic loss resulting from this product.

### Supplied As

200ug/ml of Ab purified from Bioreactor Concentrate by Protein A/G. Prepared in 10mM PBS with 0.05% BSA & 0.05% azide. Also available WITHOUT BSA & azide at 1.0mg/ml.

### Storage and Stability

Antibody with azide store at 2 to 8 °C. Antibody without azide store at -20 to -80 °C. Antibody is stable for 24 months. Non-hazardous. No MSDS required.

### Research Areas

Basal Cell Marker, Developmental Biology