

Cytokeratin 3 (KRT3) (Corneal Epithelial Marker) Antibody

Mouse Monoclonal Antibody [Clone KRT3/2130]

Catalog No	Format	Size
3850-MSM1-P0	Purified Ab with BSA and Azide at 200ug/ml	20 ug
3850-MSM1-P1	Purified Ab with BSA and Azide at 200ug/ml	100 ug
3850-MSM1-P1ABX	Purified Ab WITHOUT BSA and Azide at 1.0mg/ml	100 ug

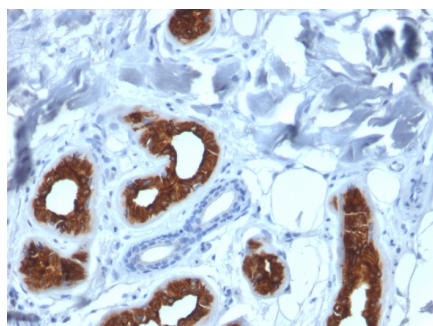
Applications	Tested Dillution	Note
Immunohistochemistry (IHC)	1-2ug/ml	30 min at RT. Staining of formalin-fixed tissues requires heating tissue sections in 10mM Tris with 1mM EDTA, pH 9.0, for 45 min at 95°C followed by cooling at RT for 20 minutes

Product Details

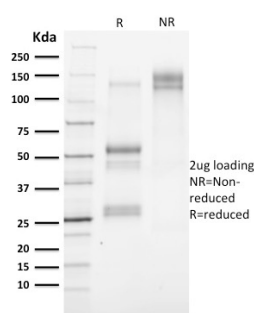
Clone	KRT3/2130
Gene Name	KRT3
Immunogen	Recombinant full-length human KRT3 protein
Host	Mouse
Clonality	Monoclonal
Isotype / Light Chain	IgG1 / Kappa
Mol. Weight of Antigen	65kDa
Species Reactivity	Human
Positive Control	A431 cells. Cornea or Skin.

**Optimal dilution for a specific application should be determined.*

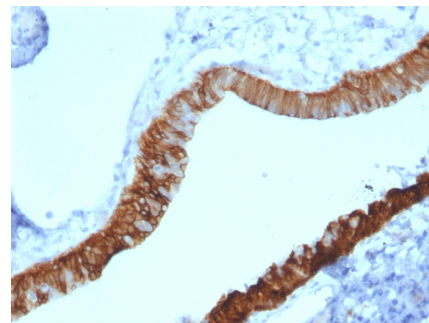
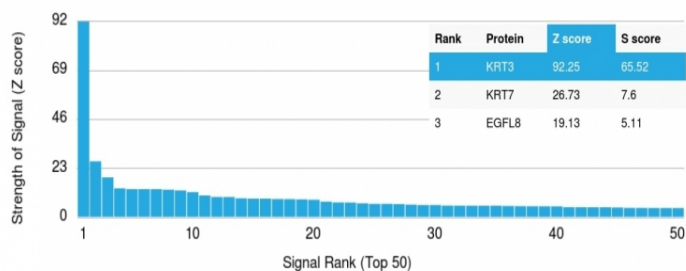
Product Images for Cytokeratin 3 (KRT3) (Corneal Epithelial Marker) Antibody



Formalin-fixed, paraffin-embedded human Skin stained with Cytokeratin 3 Mouse Monoclonal Antibody (KRT3/2130).



SDS-PAGE Analysis of Purified Cytokeratin 3 Mouse Monoclonal Antibody (KRT3/2130). Confirmation of Purity and Integrity of Antibody.



Formalin-fixed, paraffin-embedded human Ovary stained with Cytokeratin 3 Mouse Monoclonal Antibody (KRT3/2130).

Analysis of Protein Array containing more than 19,000 full-length human proteins using Cytokeratin 3 Mouse Monoclonal Antibody (KRT3/2130). Z- and S- Score: The Z-score represents the strength of a signal that a monoclonal antibody (MAb) (in combination with a fluorescently-tagged anti-IgG secondary antibody) produces when binding to a particular protein on the HuProt™ array. Z-scores are described in units of standard deviations (SD's) above the mean value of all signals generated on that array. If targets on HuProt™ are arranged in descending order of the Z-score, the S-score is the difference (also in units of SD's) between the Z-score. S-score therefore represents the relative target specificity of a MAb to its intended target. A MAb is considered to specific to its intended target, if the MAb has an S-score of at least 2.5. For example, if a MAb binds to protein X with a Z-score of 43 and to protein Y with a Z-score of 14, then the S-score for the binding of that MAb to protein X is equal to 29.

Specificity & Comments

The protein encoded by this gene is a member of the keratin gene family. The type II cytokeratins consist of basic or neutral proteins, which are arranged in pairs of heterotypic keratin chains co-expressed during differentiation of simple and stratified epithelial tissues. This type II cytokeratin is specifically expressed in the corneal epithelium with family member KRT12 and mutations in these genes have been associated with Meesmann's Corneal Dystrophy.

Supplied As

200ug/ml of Ab Purified from Bioreactor Concentrate by Protein A/G. Prepared in 10mM PBS with 0.05% BSA & 0.05% azide. Also available WITHOUT BSA & azide at 1.0mg/ml.

Storage and Stability

Antibody with azide - store at 2 to 8°C. Antibody without azide - store at -20 to -80°C. Antibody is stable for 24 months. Non-hazardous. No MSDS required.

Limitations and Warranty

This antibody is available for research use only and is not approved for use in diagnosis. There are no warranties, expressed or implied, which extend beyond this description. Company is not liable for any personal injury or economic loss resulting from this product.