

ARF1 (Golgi Apparatus Marker) Antibody

Mouse Monoclonal Antibody [Clone ARF1/2117]

Catalog No	Format	Size
375-MSM3-P0	Purified Ab with BSA and Azide at 200ug/ml	20 ug
375-MSM3-P1	Purified Ab with BSA and Azide at 200ug/ml	100 ug
375-MSM3-P1ABX	Purified Ab WITHOUT BSA and Azide at 1.0mg/ml	100 ug

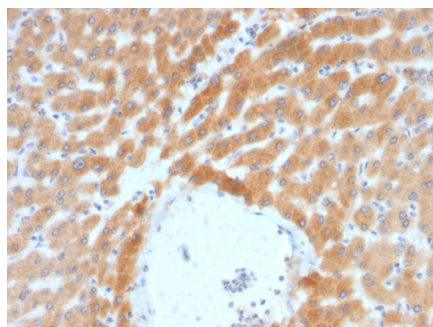
Applications	Tested Dillution	Note
Immunohistochemistry (IHC)	1-2ug/ml	30 min at RT. Staining of formalin-fixed tissues requires heating tissue sections in 10mM Tris with 1mM EDTA, pH 9.0, for 45 min at 95°C followed by cooling at RT for 20 minutes
Western Blot (WB)	2-4ug/ml	

Product Details

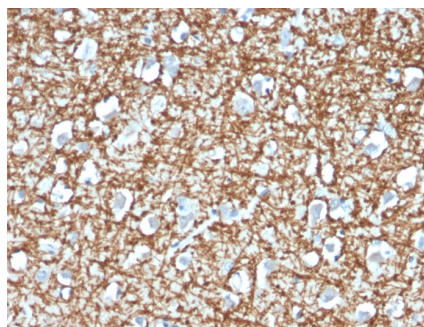
Clone	ARF1/2117
Gene Name	ARF1
Immunogen	Recombinant full-length human ARF1 protein
Host	Mouse
Clonality	Monoclonal
Isotype / Light Chain	IgG2a / Kappa
Mol. Weight of Antigen	20kDa
Cellular Localization	Cell junction, Cytoplasm, Golgi apparatus, Membrane, Perinuclear region, Postsynaptic density, Synapse, Synaptosome, trans-Golgi network membrane
Species Reactivity	Guinea Pig, Hamster, Human, Mouse, Rabbit, Rat
Positive Control	Brain or Breast., HeLa cells. Kidney, Liver, Pancreas or Lung

*Optimal dilution for a specific application should be determined.

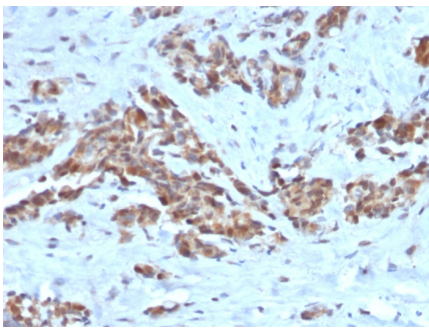
Product Images for ARF1 (Golgi Apparatus Marker) Antibody



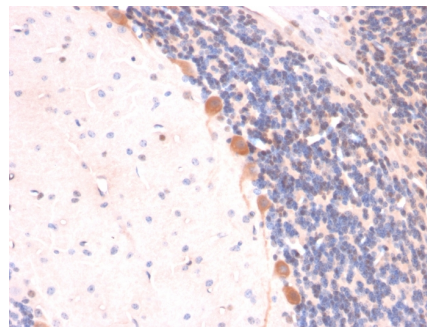
Formalin-fixed, paraffin-embedded human Liver stained with ARF1 Mouse Monoclonal Antibody (ARF1/2117).



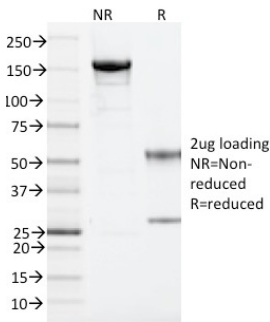
Formalin-fixed, paraffin-embedded human Brain stained with ARF1 Mouse Monoclonal Antibody (ARF1/2117).



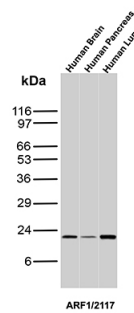
Formalin-fixed, paraffin-embedded human Breast stained with ARF1 Mouse Monoclonal Antibody (ARF1/2117).



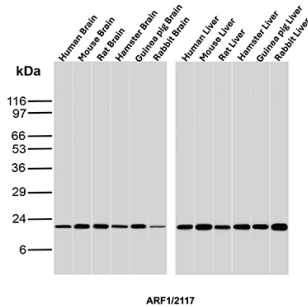
Formalin-fixed, paraffin-embedded Rat Brain stained with ARF1 Mouse Monoclonal Antibody (ARF1/2117).



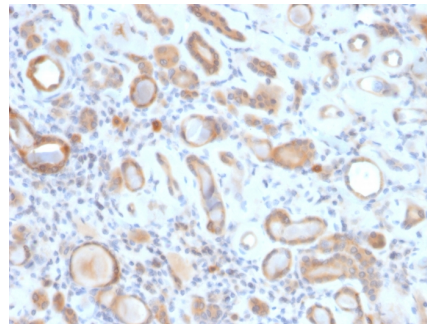
SDS-PAGE Analysis Purified ARF1 Mouse Monoclonal Antibody (ARF1/2117). Confirmation of Integrity and Purity of the Antibody.



Western blot analysis of Human Brain, Human Pancreas and Human Lung tissue lysates using ARF1 Mouse Monoclonal Antibody (ARF1/2117).



Western blot analysis of Human Brain, Mouse Brain, Rat Brain, Hamster Brain, Guinea pig Brain, Rabbit Brain, Human Liver, Mouse Liver, Rat Liver, Hamster Liver, Guinea pig Liver and Rabbit Liver tissue lysates using ARF1 Mouse Monoclonal Antibody (ARF1/2117).



Formalin-fixed, paraffin-embedded human Kidney stained with ARF1 Mouse Monoclonal Antibody (ARF1/2117).

Specificity & Comments

The ADP-ribosylation factor (ARF) family comprises a group of structurally and functionally conserved proteins, which are members of the Ras superfamily of regulatory GTP-binding proteins. The ARF family is divided functionally into the ARF and the ARF-like proteins. ARF's share more than 60% sequence identity, appear to be ubiquitous in eukaryotes, and are highly conserved evolutionarily. ARF is involved in intracellular protein traffic to and within the Golgi complex. ARF has a number of disparate activities including maintenance of organelle integrity, assembly of coat proteins, as a co-factor for cholera toxin and as an activator of phospholipase D.

Limitations and Warranty

This antibody is available for research use only and is not approved for use in diagnosis. There are no warranties, expressed or implied, which extend beyond this description. Company is not liable for any personal injury or economic loss resulting from this product.

Supplied As

200ug/ml of Ab Purified from Bioreactor Concentrate by Protein A/G. Prepared in 10mM PBS with 0.05% BSA & 0.05% azide. Also available WITHOUT BSA & azide at 1.0mg/ml.

Storage and Stability

Antibody with azide - store at 2 to 8°C. Antibody without azide - store at -20 to -80°C. Antibody is stable for 24 months. Non-hazardous. No MSDS required.

Research Areas

Cytokine Signaling, Immunology, Infectious Disease