

Recombinant Catenin, gamma (Cardiomyocyte Marker) Antibody

Mouse Monoclonal Antibody [Clone rCTNG/1664]

| Catalog No | Format | Size |
|-----------------|---|--------|
| 3728-MSM6-P0 | Purified Ab with BSA and Azide at 200ug/ml | 20 ug |
| 3728-MSM6-P1 | Purified Ab with BSA and Azide at 200ug/ml | 100 ug |
| 3728-MSM6-P1ABX | Purified Ab WITHOUT BSA and Azide at 1.0mg/ml | 100 ug |

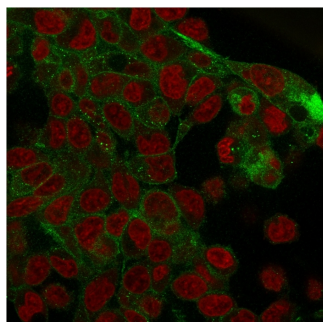
| Applications | Tested Dillution | Note |
|-------------------------|---------------------|------|
| Flow Cytometry (Flow) | 1-2ug/million cells | |
| Immunofluorescence (IF) | 1-3ug/ml | |
| Western Blot (WB) | 2-4ug/ml | |

Product Details

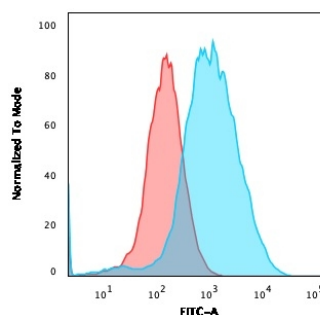
| | |
|------------------------|--|
| Clone | rCTNG/1664 |
| Gene Name | JUP |
| Immunogen | Recombinant human gamma catenin protein |
| Host | Mouse |
| Clonality | Monoclonal |
| Isotype / Light Chain | IgG1 / Kappa |
| Mol. Weight of Antigen | 80-87kDa |
| Cellular Localization | Adherens junction, Cell junction, Cytoplasm, Cytoskeleton, Desmosome, Membrane |
| Species Reactivity | Human |
| Positive Control | A431, T47D or MCF-7 cells. Skin. |

**Optimal dilution for a specific application should be determined.*

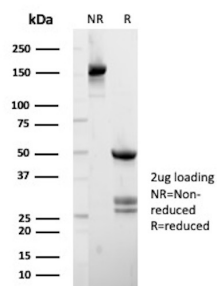
Product Images for Recombinant Catenin, gamma (Cardiomyocyte Marker) Antibody



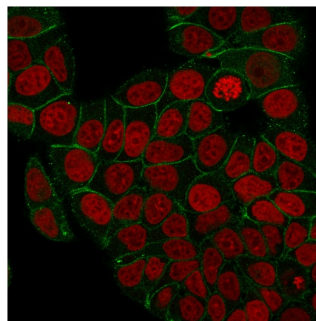
Immunofluorescence staining of PFA-fixed HepG2 cells with Catenin, gamma Mouse Monoclonal Antibody (rCTNG/1664) followed by goat anti-Mouse IgG-CF488 (Green). Nuclei are labeled with Reddot (Red).



Flow Cytometric Analysis of PFA-fixed MCF-7 cells using Catenin, gamma Mouse Monoclonal Antibody (rCTNG/1664) followed by goat anti-Mouse IgG-CF488 (Blue); Isotype Control (Red).



SDS-PAGE Analysis of Purified Gamma-Catenin Recombinant Mouse Monoclonal Antibody (rCTNG/1664). Confirmation of Purity and Integrity of Antibody.



Immunofluorescence staining of PFA-fixed MCF-7 cells with Catenin, gamma Mouse Monoclonal Antibody (rCTNG/1664) followed by goat anti-Mouse IgG-CF488 (Green). Nuclei are labeled with Reddot (Red).

Specificity & Comments

It recognizes a protein of 80-87kDa, identified as gamma-catenin. The catenins (-T-catenin, is located on chromosome 10, and mutations in this gene show a strong correlation to late-onset Alzheimer's disease (LOAD) as well as to dilated cardiomyopathy.

Supplied As

200ug/ml of Ab Purified from Bioreactor Concentrate by Protein A/G. Prepared in 10mM PBS with 0.05% BSA & 0.05% azide. Also available WITHOUT BSA & azide at 1.0mg/ml.

Storage and Stability

Antibody with azide - store at 2 to 8°C. Antibody without azide - store at -20 to -80°C. Antibody is stable for 24 months. Non-hazardous. No MSDS required.

Research Areas

Cardiovascular, Developmental Biology, Immunology, Signal Transduction

Limitations and Warranty

This antibody is available for research use only and is not approved for use in diagnosis. There are no warranties, expressed or implied, which extend beyond this description. Company is not liable for any personal injury or economic loss resulting from this product.