

Catenin, gamma (Cardiomyocyte Marker) Antibody

Mouse Monoclonal Antibody [Clone 15F11]

Catalog No	Format	Size
3728-MSM2-P0	Purified Ab with BSA and Azide at 200ug/ml	20 ug
3728-MSM2-P1	Purified Ab with BSA and Azide at 200ug/ml	100 ug
3728-MSM2-P1ABX	Purified Ab WITHOUT BSA and Azide at 1.0mg/ml	100 ug

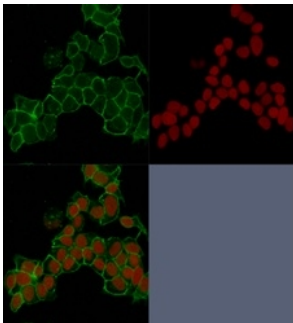
Applications	Tested Dillution	Note
Flow Cytometry (Flow)	1-2ug/million cells	
Immunofluorescence (IF)	1-3ug/ml	
Immunohistochemistry (IHC)	1-2ug/ml	30 min at RT. Staining of formalin-fixed tissues requires heating tissue sections in 10mM Tris with 1mM EDTA, pH 9.0, for 45 min at 95°C followed by cooling at RT for 20 minutes
Western Blot (WB)	2-4ug/ml	

Product Details

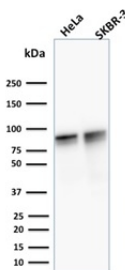
Clone	15F11
Gene Name	JUP
Immunogen	Recombinant, full length chicken Catenin gamma protein
Host	Mouse
Clonality	Monoclonal
Isotype / Light Chain	IgG1 / Kappa
Mol. Weight of Antigen	80-87kDa
Cellular Localization	Adherens junction, Cell junction, Cytoplasm, Cytoskeleton, Desmosome, Membrane
Species Reactivity	Cat, Chicken, Cow, Dog, Human, Mouse, Rat
Positive Control	HeLa, SK-BR3 or MCF-7 cells.

*Optimal dilution for a specific application should be determined.

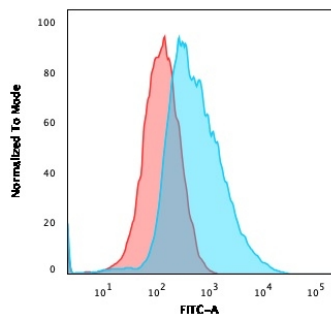
Product Images for Catenin, gamma (Cardiomyocyte Marker) Antibody



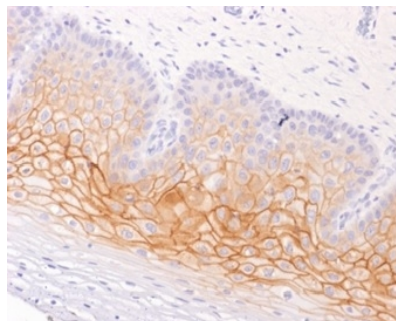
Immunofluorescence Analysis of PFA-fixed HeLa cells stained using Catenin, gamma Mouse Monoclonal Antibody (15F11) followed by goat anti-mouse IgG-CF488 (green). Nuclei stained with RedDot (red).



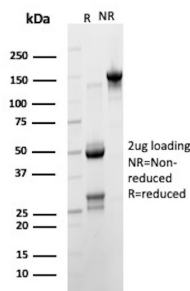
Western blot analysis of HeLa and SK-BR3 cell lysates using Catenin, gamma Mouse Monoclonal Antibody (15F11).



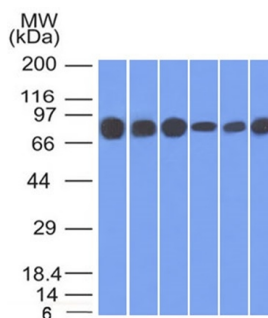
Flow Cytometric Analysis of PFA-fixed MCF-7 cells. Catenin, gamma Mouse Monoclonal Antibody (15F11) followed by goat anti-mouse IgG-CF488 (blue); isotype control (red).



Formalin-fixed, paraffin-embedded human cervix stained with Catenin, gamma Mouse Monoclonal Antibody (15F11). HIER: Tris/EDTA, pH9.0, 45min. 2 °: HRP-polymer, 30min. DAB, 5min.



SDS-PAGE Analysis of Purified Gamma-Catenin Mouse Monoclonal Antibody (15F11). Confirmation of Purity and Integrity of Antibody.



Western blot analysis: HT20, 293, A431, MCF-7, HepG2 & A549 cell lysates using Catenin, gamma Mouse Monoclonal Antibody (15F11).

Specificity & Comments

It recognizes a protein of 80-87kDa, identified as gamma-catenin. The catenins (γ , β , δ and τ) are ubiquitously expressed, cytoplasmic proteins that associate with E-cadherin at cellular junctions. Catenin/cadherin complexes play an important role in mediating cellular adhesion. τ -catenin, also referred to as VR22, is a 895-amino acid protein that is most abundantly expressed in cardio-myocytes and in the peritubular myoid cells of the testis. τ -catenin binds to β -catenin as well as to δ -catenin, and it functions to inhibit Wnt signaling. CTNNA3, the gene that encodes for τ -catenin, is located on chromosome 10, and mutations in this gene show a strong correlation to late-onset Alzheimer's disease (LOAD) as well as to dilated cardiomyopathy.

Limitations and Warranty

This antibody is available for research use only and is not approved for use in diagnosis. There are no warranties, expressed or implied, which extend beyond this description. Company is not liable for any personal injury or economic loss resulting from this product.

Supplied As

200ug/ml of Ab purified from Bioreactor Concentrate by Protein A/G. Prepared in 10mM PBS with 0.05% BSA & 0.05% azide. Also available WITHOUT BSA & azide at 1.0mg/ml.

Storage and Stability

Antibody with azide - store at 2 to 8 °C. Antibody without azide - store at -20 to -80 °C. Antibody is stable for 24 months. Non-hazardous. No MSDS required.

Research Areas

Cardiovascular, Developmental Biology, Immunology, Signal Transduction