

## Recombinant Involucrin (Squamous Cell Terminal Differentiation Marker) Antibody

Rabbit Monoclonal Antibody [Clone IVRN/2113R]

Catalog No	Format	Size
3713-RBM3-P0	Purified Ab with BSA and Azide at 200ug/ml	20 ug
3713-RBM3-P1	Purified Ab with BSA and Azide at 200ug/ml	100 ug
3713-RBM3-P1ABX	Purified Ab WITHOUT BSA and Azide at 1.0mg/ml	100 ug

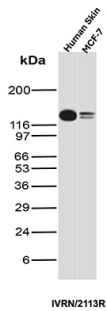
Applications	Tested Dillution	Note
Immunohistochemistry (IHC)	1-2ug/ml	30 min at RT. Staining of formalin-fixed tissues requires heating tissue sections in 10mM Tris with 1mM EDTA, pH 9.0, for 45 min at 95°C followed by cooling at RT for 20 minutes
Western Blot (WB)	2-4ug/ml	

### Product Details

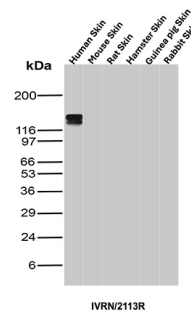
<b>Clone</b>	IVRN/2113R
<b>Gene Name</b>	IVL
<b>Immunogen</b>	Recombinant human full-length Involucrin protein (IVRN)
<b>Host</b>	Rabbit
<b>Clonality</b>	Monoclonal
<b>Isotype / Light Chain</b>	IgG / Kappa
<b>Mol. Weight of Antigen</b>	66-170kDa
<b>Cellular Localization</b>	Cytoplasm
<b>Species Reactivity</b>	Dog, Gorilla, Human, Owl monkey, Pig
<b>Positive Control</b>	MCF-7 cells. Localized to upper spinous and granular layers in normal skin, Human Skin

\*Optimal dilution for a specific application should be determined.

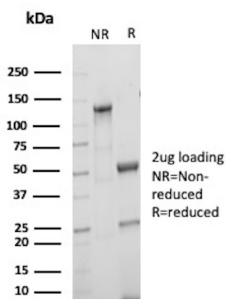
### Product Images for Recombinant Involucrin (Squamous Cell Terminal Differentiation Marker) Antibody



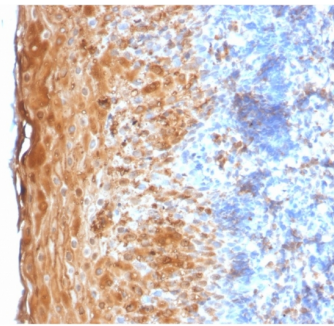
Western blot analysis of Human Skin and MCF-7 lysates using Involucrin Recombinant Rabbit Monoclonal Antibody (IVRN/2113R).



Western Blot Analysis of Human Skin, Mouse Skin, Rat Skin, Hamster Skin, Guinea pig Skin and Rabbit Skin tissue lysates using Involucrin Recombinant Rabbit Monoclonal Antibody (IVRN/2113R).



SDS-PAGE Analysis of Purified Involucrin Recombinant Rabbit Monoclonal Antibody (IVRN/2113R). Confirmation of Purity and Integrity of Antibody.



Formalin-fixed, paraffin-embedded human Tonsil stained with Involucrin Rabbit Recombinant Monoclonal Antibody (IVRN/2113R).

### Specificity & Comments

It recognizes a protein of 66kDa-170kDa, identified as involucrin. In Western blotting of cultured human keratinocytes, this MAb reacts with a 120kDa protein. It stains the involucrin in a variety of sizes: 170kDa in MCF-7 cells, a doublet of ~115kDa and 150kDa in gorilla and owl monkey, 66kDa in dog, and a doublet of 105kDa in pig. Its epitope maps between codon 421-568 of human involucrin. Involucrin is expressed in a range of stratified squamous epithelia, including the cornea, which lacks a distinct cornified layer. In normal epidermis, it is first expressed in the upper spinous layers, and in keratinocyte cultures, all cells that have left the basal layer express it. Involucrin expression is altered in pathological conditions: in psoriasis and other benign epidermal hyperplasias, involucrin expression begins closer to the basal layer than normal; expression is abnormal in squamous cell carcinomas and premalignant lesions, and is reduced in severe dysplasias of the larynx and cervix.

### Limitations and Warranty

This antibody is available for research use only and is not approved for use in diagnosis. There are no warranties, expressed or implied, which extend beyond this description. Company is not liable for any personal injury or economic loss resulting from this product.

### Supplied As

200ug/ml of Ab Purified from Bioreactor Concentrate by Protein A/G. Prepared in 10mM PBS with 0.05% BSA & 0.05% azide. Also available WITHOUT BSA & azide at 1.0mg/ml.

### Storage and Stability

Antibody with azide - store at 2 to 8°C. Antibody without azide - store at -20 to -80°C. Antibody is stable for 24 months. Non-hazardous. No MSDS required.

### Research Areas

Autophagy, Developmental Biology