

CD29 (Stem Cell Marker) Antibody

Mouse Monoclonal Antibody [Clone ITGB1/3613]

Catalog No	Format	Size
3688-MSM3-P0	Purified Ab with BSA and Azide at 200ug/ml	20 ug
3688-MSM3-P1	Purified Ab with BSA and Azide at 200ug/ml	100 ug
3688-MSM3-P1ABX	Purified Ab WITHOUT BSA and Azide at 1.0mg/ml	100 ug

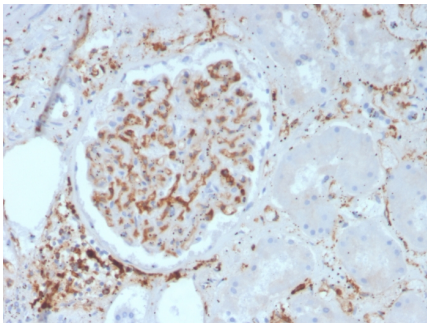
Applications	Tested Dillution	Note
Immunohistochemistry (IHC)	1-2ug/ml	30 min at RT. Staining of formalin-fixed tissues requires heating tissue sections in 10mM Tris with 1mM EDTA, pH 9.0, for 45 min at 95°C followed by cooling at RT for 20 minutes
Western Blot (WB)	2-4ug/ml	

Product Details

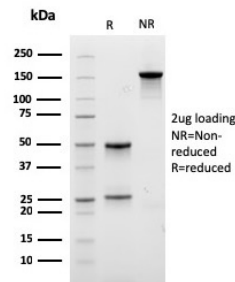
Clone	ITGB1/3613
Gene Name	ITGB1
Immunogen	Purified human beta 1 integrin from HT1080 fibrosarcoma cell extract
Host	Mouse
Clonality	Monoclonal
Isotype / Light Chain	IgG1 / Kappa
Mol. Weight of Antigen	110kDa (non-reduced) & 130kDa (reduced)
Cellular Localization	Cell junction, Cell membrane, Cell projection, Cell surface, Cleavage furrow, Focal adhesion, Invadopodium membrane, Lamellipodium, Melanosome, Recycling endosome, Ruffle, Ruffle membrane, Sarcolemma
Species Reactivity	Human
Positive Control	HT1080 whole cell lysate. HeLa cell line. Human Kidney.

*Optimal dilution for a specific application should be determined.

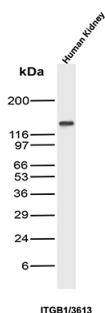
Product Images for CD29 (Stem Cell Marker) Antibody



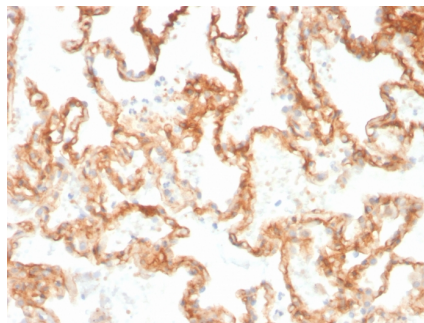
Formalin-fixed, paraffin-embedded human kidney stained with CD29 Mouse Monoclonal Antibody (ITGB1/3613).



SDS-PAGE Analysis of Purified CD29 Mouse Monoclonal Antibody (ITGB1/3613). Confirmation of Purity and Integrity of Antibody.



Western Blot Analysis of Human Kidney tissue lysate using CD29 Mouse Monoclonal Antibody (ITGB1/3613).



Formalin-fixed, paraffin-embedded human Lung stained with CD29 Mouse Monoclonal Antibody (ITGB1/3613).

Specificity & Comments

Recognizes CD29. Binds to the cell membrane of T- and B-lymphocytes, monocytes, platelets, fibroblasts, endothelial cells, mast cells and smooth muscle cells. CD29 is an adhesion receptor and co-stimulatory molecule. This antigen was initially characterized as GPIIa on platelets and as the common b1 subunit of the very late antigen (VLA) protein family. CD29 forms a non-covalent heterodimeric complex with integrin alpha subunits. It also mediates adhesion to invasion and thrombospondin.

Supplied As

200ug/ml of Ab purified from Bioreactor Concentrate by Protein A/G. Prepared in 10mM PBS with 0.05% BSA & 0.05% azide. Also available WITHOUT BSA & azide at 1.0mg/ml.

Storage and Stability

Antibody with azide - store at 2 to 8°C. Antibody without azide - store at -20 to -80°C. Antibody is stable for 24 months. Non-hazardous. No MSDS required.

Research Areas

AKT Signaling, Angiogenesis, Articular Cartilage Extracellular Matrix, BBB VCAM-1 Signaling, Cardiovascular, Cytokine Signaling, Developmental Biology, Immunology, Infectious Disease, Lung Cancer, Mesenchymal Stem Cell Differentiation, Signal Transduction, Stem Cell Differentiation

Limitations and Warranty

This antibody is available for research use only and is not approved for use in diagnosis. There are no warranties, expressed or implied, which extend beyond this description. Company is not liable for any personal injury or economic loss resulting from this product.