

CD11a / Integrin L / LFA-1 Chain Antibody

Mouse Monoclonal Antibody [Clone CRIS-3]

Catalog No	Format	Size
3683-MSM1-P0	Purified Ab with BSA and Azide at 200ug/ml	20 ug
3683-MSM1-P1	Purified Ab with BSA and Azide at 200ug/ml	100 ug
3683-MSM1-P1ABX	Purified Ab WITHOUT BSA and Azide at 1.0mg/ml	100 ug

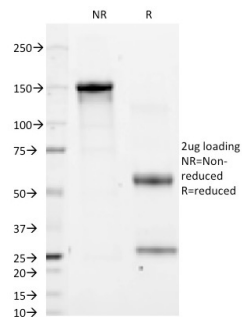
Applications	Tested Dillution	Note
Flow Cytometry (Flow)	1-2ug/million cells	
Immunofluorescence (IF)	1-3ug/ml	

Product Details

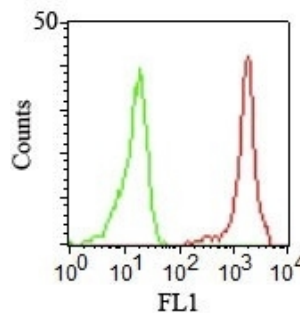
Clone	CRIS-3
Gene Name	ITGAL
Immunogen	Stimulated human leukocytes
Host	Mouse
Clonality	Monoclonal
Isotype / Light Chain	IgG2b / Kappa
Mol. Weight of Antigen	180kDa
Cellular Localization	Cell membrane
Species Reactivity	Human
Positive Control	HL60, HUT-78, JY, Molt-4, U937 and human leukocytes. Human lymph nodes and tonsils.

*Optimal dilution for a specific application should be determined.

Product Images for CD11a / Integrin L / LFA-1 Chain Antibody



SDS-PAGE Analysis of Purified CD11a Mouse Monoclonal Antibody (CRIS-3). Confirmation of Integrity and Purity of Antibody



Flow Cytometric staining of human PBMCs. CD11a Mouse Monoclonal Antibody (CRIS-3).

Specificity & Comments

Recognizes a protein of 180kDa, identified as CD11a (Leucocyte Workshop II; Code N202). CD11a complex with the 2 subunit of the integrin family, CD18, to form the cell surface heterodimer, LFA-1 or CD11a /C18 (aLbL). LFA-1 is expressed on all leukocytes including lymphocytes, monocytes, and granulocytes. It is involved in leukocyte adhesion to its ligands including intercellular adhesion molecule-1 (ICAM-1 or CD54), ICAM-2 (CD102), ICAM-3 (CD50) and Telencephalin (TLN) and play a role in most immune/inflammatory responses.

Supplied As

200ug/ml of Ab Purified from Bioreactor Concentrate by Protein A/G. Prepared in 10mM PBS with 0.05% BSA & 0.05% azide. Also available WITHOUT BSA & azide at 1.0mg/ml.

Storage and Stability

Antibody with azide - store at 2 to 8°C. Antibody without azide - store at -20 to -80°C. Antibody is stable for 24 months. Non-hazardous. No MSDS required.

Research Areas

AKT Signaling, BBB VCAM-1 Signaling, Cardiovascular, Hematopoietic Stem Cells, Immunology, Transcription Factors

Limitations and Warranty

This antibody is available for research use only and is not approved for use in diagnosis. There are no warranties, expressed or implied, which extend beyond this description. Company is not liable for any personal injury or economic loss resulting from this product.
