

## Recombinant Insulin Receptor Alpha Antibody

Rabbit Monoclonal Antibody [Clone INSR/2277R]

Catalog No	Format	Size
3643-RBM2-P0	Purified Ab with BSA and Azide at 200ug/ml	20 ug
3643-RBM2-P1	Purified Ab with BSA and Azide at 200ug/ml	100 ug
3643-RBM2-P1ABX	Purified Ab WITHOUT BSA and Azide at 1.0mg/ml	100 ug

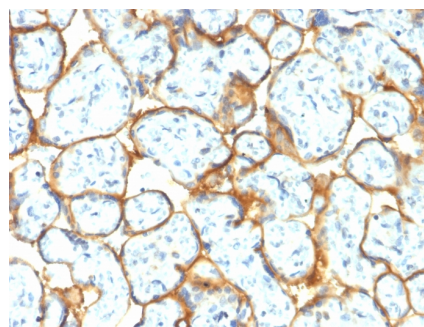
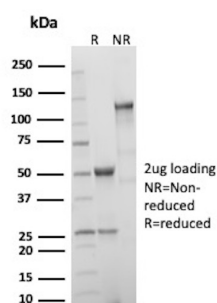
Applications	Tested Dillution	Note
Immunohistochemistry (IHC)	1-2ug/ml	30 min at RT. Staining of formalin-fixed tissues requires heating tissue sections in 10mM Tris with 1mM EDTA, pH 9.0, for 45 min at 95°C followed by cooling at RT for 20 minutes

### Product Details

<b>Clone</b>	INSR/2277R
<b>Gene Name</b>	INSR
<b>Immunogen</b>	Recombinant fragment of extracellular domain of human Insulin Receptor alpha (exact sequence is proprietary)
<b>Host</b>	Rabbit
<b>Clonality</b>	Monoclonal
<b>Isotype / Light Chain</b>	IgG / Kappa
<b>Mol. Weight of Antigen</b>	135kDa
<b>Cellular Localization</b>	Cell membrane, Late endosome, Lysosome
<b>Species Reactivity</b>	Human
<b>Positive Control</b>	Jurkat cells. Human pancreas.

\*Optimal dilution for a specific application should be determined.

### Product Images for Recombinant Insulin Receptor Alpha Antibody



SDS-PAGE Analysis of Purified Insulin receptor Recombinant Rabbit Monoclonal Antibody (INSR/2277R). Confirmation of Purity and Integrity of Antibody.

Formalin-fixed, paraffin-embedded human Placenta stained with Insulin Receptor Rabbit Recombinant Monoclonal Antibody (INSR/2277R).

**Specificity & Comments**

The insulin receptor (INSR) is a heterodimeric protein complex that has an intracellular subunit, which is disulfide-linked to a transmembrane segment. The insulin ligand binds to the INSR and initiates molecular signaling pathways that promote glucose uptake in cells and glycogen synthesis. Insulin binding to INSR induces phosphorylation of intra-cellular tyrosine kinase domains and recruitment of multiple SH2 and SH3 domain-containing intracellular proteins that serve as signaling intermediates for pleiotropic effects of insulin. Type 1 diabetes is an autoimmune condition of the endocrine pancreas that results in destruction of insulin secreting cells and a progressive loss in insulin-sensitive glucose uptake by cells.

---

**Limitations and Warranty**

This antibody is available for research use only and is not approved for use in diagnosis. There are no warranties, expressed or implied, which extend beyond this description. Company is not liable for any personal injury or economic loss resulting from this product.

---

**Supplied As**

200ug/ml of Ab Purified from Bioreactor Concentrate by Protein A/G. Prepared in 10mM PBS with 0.05% BSA & 0.05% azide. Also available WITHOUT BSA & azide at 1.0mg/ml.

---

**Storage and Stability**

Antibody with azide - store at 2 to 8°C. Antibody without azide - store at -20 to -80°C. Antibody is stable for 24 months. Non-hazardous. No MSDS required.

---

**Research Areas**

AKT Signaling, Cardiovascular, Neuroinflammation, Signal Transduction

---