

Insulin Receptor Alpha Antibody

Mouse Monoclonal Antibody [Clone INSR/1661]

Catalog No	Format	Size
3643-MSM1-P0	Purified Ab with BSA and Azide at 200ug/ml	20 ug
3643-MSM1-P1	Purified Ab with BSA and Azide at 200ug/ml	100 ug
3643-MSM1-P1ABX	Purified Ab WITHOUT BSA and Azide at 1.0mg/ml	100 ug

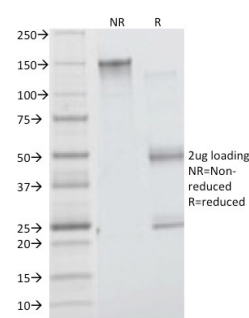
Applications	Tested Dillution	Note
--------------	------------------	------

Product Details

Clone	INSR/1661
Gene Name	INSR
Immunogen	Recombinant fragment of extracellular domain of human Insulin Receptor alpha (exact sequence is proprietary)
Host	Mouse
Clonality	Monoclonal
Isotype / Light Chain	IgG1 / Kappa
Mol. Weight of Antigen	135kDa
Cellular Localization	Cell membrane, Late endosome, Lysosome
Species Reactivity	Human
Positive Control	Jurkat cells. Human pancreas.

*Optimal dilution for a specific application should be determined.

Product Images for Insulin Receptor Alpha Antibody



SDS-PAGE Analysis of Purified Insulin Receptor Mouse Monoclonal Antibody (INSR/1661). Confirmation of Integrity and Purity of Antibody.

Specificity & Comments

The insulin receptor (INSR) is a heterodimeric protein complex that has an intracellular subunit, which is disulfide-linked to a transmembrane segment. The insulin ligand binds to the INSR and initiates molecular signaling pathways that promote glucose uptake in cells and glycogen synthesis. Insulin binding to INSR induces phosphorylation of intra-cellular tyrosine kinase domains and recruitment of multiple SH2 and SH3 domain-containing intracellular proteins that serve as signaling intermediates for pleiotropic effects of insulin. Type 1 diabetes is an autoimmune condition of the endocrine pancreas that results in destruction of insulin secreting cells and a progressive loss in insulin-sensitive glucose uptake by cells.

Limitations and Warranty

This antibody is available for research use only and is not approved for use in diagnosis. There are no warranties, expressed or implied, which extend beyond this description. Company is not liable for any personal injury or economic loss resulting from this product.

Supplied As

200ug/ml of Ab Purified from Bioreactor Concentrate by Protein A/G. Prepared in 10mM PBS with 0.05% BSA & 0.05% azide. Also available WITHOUT BSA & azide at 1.0mg/ml.

Storage and Stability

Antibody with azide - store at 2 to 8°C. Antibody without azide - store at -20 to -80°C. Antibody is stable for 24 months. Non-hazardous. No MSDS required.

Research Areas

AKT Signaling, Cardiovascular, Neuroinflammation, Signal Transduction