

Recombinant INSM1 (Pan-Neuroendocrine Marker) Antibody

Rabbit Monoclonal Antibody [Clone INSM1/6286R]

Catalog No	Format	Size
3642-RBM6-P0	Purified Ab with BSA and Azide at 200ug/ml	20 ug
3642-RBM6-P1	Purified Ab with BSA and Azide at 200ug/ml	100 ug
3642-RBM6-P1ABX	Purified Ab WITHOUT BSA and Azide at 1.0mg/ml	100 ug

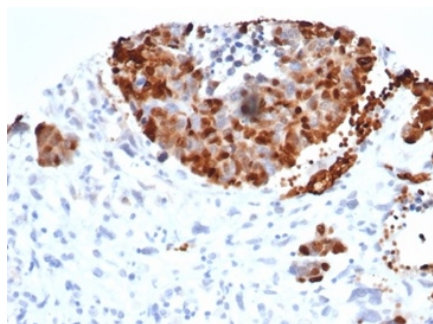
Applications	Tested Dillution	Note
Immunohistochemistry (IHC)	1-2ug/ml	30 min at RT. Staining of formalin-fixed tissues requires heating tissue sections in 10mM Tris with 1mM EDTA, pH 9.0, for 45 min at 95°C followed by cooling at RT for 20 minutes

Product Details

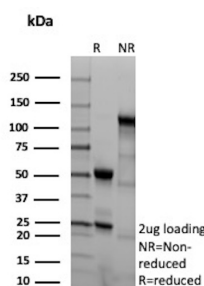
Clone	INSM1/6286R
Gene Name	INSM1
Immunogen	Recombinant fragment (around aa81-125) corresponding to the N-terminus of human INSM1
Host	Rabbit
Clonality	Monoclonal
Isotype / Light Chain	IgG / Kappa
Mol. Weight of Antigen	58kDa
Cellular Localization	Nucleus
Species Reactivity	Human
Positive Control	Human pancreas or neuroendocrine tumor.

**Optimal dilution for a specific application should be determined.*

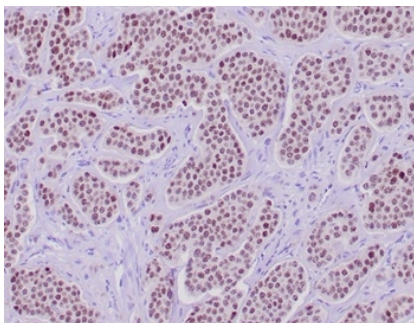
Product Images for Recombinant INSM1 (Pan-Neuroendocrine Marker) Antibody



Formalin-fixed, paraffin-embedded human bladder carcinoma stained with INSM-1 Recombinant Rabbit Monoclonal Antibody (INSM1/6286R).



SDS-PAGE Analysis of Purified Insulinoma-associated protein 1 Recombinant Rabbit Monoclonal Antibody (INSM1/6286R). Confirmation of Purity and Integrity of Antibody.



Formalin-fixed, paraffin-embedded human neuroendocrine tumor stained with INSM-1 Recombinant Rabbit Monoclonal Antibody (INSM1/6286R).

Specificity & Comments

Insulinoma-associated protein 1 (INSM1) is a developmentally regulated zinc-finger transcription factor. It localizes to the nucleus and is expressed in embryonic tissues undergoing neuroendocrine differentiation. INSM1 is not expressed in normal adult tissues but can be found highly expressed in neuroendocrine tumors. INSM1 is positive in 95% of lung small cell carcinoma and 91% of lung large cell neuroendocrine carcinoma, compared with 75% and 78% with the combined panel of traditional neuroendocrine markers (synaptophysin, chromogranin, and CD56). INSM1 stains 100% of the atypical carcinoids, typical carcinoids and paragangliomas, but only 3% of adenocarcinomas and 4% of squamous cell carcinomas. Therefore, INSM1 is sensitive and specific to be a single first-line pan-neuroendocrine marker.

Limitations and Warranty

This antibody is available for research use only and is not approved for use in diagnosis. There are no warranties, expressed or implied, which extend beyond this description. Company is not liable for any personal injury or economic loss resulting from this product.

Supplied As

200ug/ml of Ab produced in HEK293 cell mammalian-based expression system. Prepared in 10mM PBS with 0.05% BSA & 0.05% azide. Also available WITHOUT BSA & azide at 1.0mg/ml.

Storage and Stability

Antibody with azide - store at 2 to 8 °C. Antibody without azide - store at -20 to -80 °C. Antibody is stable for 24 months. Non-hazardous. No MSDS required.

Research Areas

Developmental Biology