

## Recombinant Insulin / IRDN (beta-Cell & Insulinoma Marker) Antibody

Mouse Monoclonal Antibody [Clone rIRDN/805]

Catalog No	Format	Size
3630-MSM9-P0	Purified Ab with BSA and Azide at 200ug/ml	20 ug
3630-MSM9-P1	Purified Ab with BSA and Azide at 200ug/ml	100 ug
3630-MSM9-P1ABX	Purified Ab WITHOUT BSA or Azide at 1.0mg/ml	100 ug

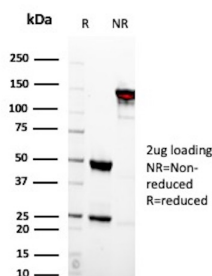
Applications	Tested Dillution	Note
Immunohistochemistry (IHC)	1-2ug/ml	30 min at RT. Staining of formalin-fixed tissues requires heating tissue sections in 10mM Tris with 1mM EDTA, pH 9.0, for 45 min at 95°C followed by cooling at RT for 20 minutes
Western Blot (WB)	2-4ug/ml	

### Product Details

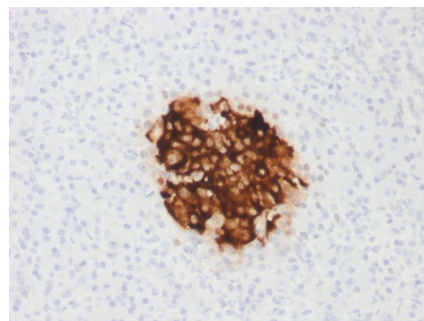
<b>Clone</b>	rIRDN/805
<b>Immunogen</b>	Pig Insulin
<b>Host</b>	Mouse
<b>Clonality</b>	Monoclonal
<b>Isotype / Light Chain</b>	IgG1 / Kappa
<b>Mol. Weight of Antigen</b>	11.98kDa
<b>Cellular Localization</b>	Secreted
<b>Species Reactivity</b>	Human
<b>Positive Control</b>	MIA PaCa-2 cells. Pancreas.

\*Optimal dilution for a specific application should be determined.

### Product Images for Recombinant Insulin / IRDN (beta-Cell & Insulinoma Marker) Antibody



SDS-PAGE Analysis of Purified Insulin Recombinant Mouse Monoclonal Antibody (rIRDN/805). Confirmation of Purity and Integrity of Antibody.



Formalin-fixed, paraffin-embedded human Pancreas stained with Insulin Mouse Recombinant Monoclonal Antibody (rIRDN/805).

### Specificity & Comments

Recognizes a polypeptide which is identified as insulin, a 51-amino acid polypeptide composed of A and B chains connected through the C-peptide. Proinsulin, which has very little biological activity, is cleaved by proteases within its cell of origin into the insulin molecule and the C-terminal basic residue. Insulin enhances membrane transport of glucose, amino acids, and certain ions. It also promotes glycogen storage, formation of triglycerides, and synthesis of proteins and nucleic acids. Deficiency of insulin results in diabetes mellitus. The main storage site for insulin is the pancreatic islets. Antibodies to insulin are important as beta-cell and insulinoma marker.

### Supplied As

200ug/ml of Ab produced in a mammalian-based expression system. Prepared in 10mM PBS with 0.05% BSA & 0.05% azide. Also available WITHOUT BSA & azide at 1.0mg/ml.

### Storage and Stability

Antibody with azide - store at 2 to 8 °C. Antibody without azide - store at -20 to -80 °C. Antibody is stable for 24 months. Non-hazardous. No MSDS required.

## Limitations and Warranty

This antibody is available for research use only and is not approved for use in diagnosis. There are no warranties, expressed or implied, which extend beyond this description. Company is not liable for any personal injury or economic loss resulting from this product.

---