

Inhibin, alpha (INHA) (Gonadal Cell Marker) Antibody

Mouse Monoclonal Antibody [Clone INHA/4266]

Catalog No	Format	Size
3623-MSM6-P0	Purified Ab with BSA and Azide at 200ug/ml	20 ug
3623-MSM6-P1	Purified Ab with BSA and Azide at 200ug/ml	100 ug
3623-MSM6-P1ABX	Purified Ab WITHOUT BSA and Azide at 1.0mg/ml	100 ug

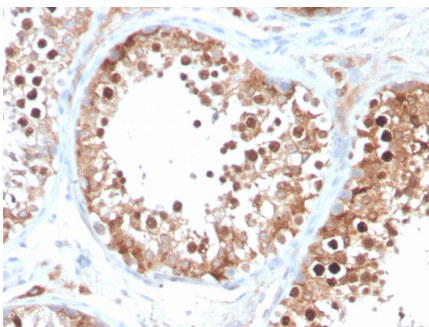
Applications	Tested Dillution	Note
Immunohistochemistry (IHC)	1-2ug/ml	30 min at RT. Staining of formalin-fixed tissues requires heating tissue sections in 10mM Tris with 1mM EDTA, pH 9.0, for 45 min at 95°C followed by cooling at RT for 20 minutes

Product Details

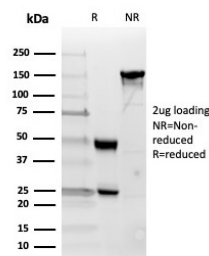
Clone	INHA/4266
Gene Name	INHA
Immunogen	A synthetic peptide (around aa73-96) of α -subunit of human inhibin A protein (exact sequence is proprietary)
Host	Mouse
Clonality	Monoclonal
Isotype / Light Chain	IgG2a
Mol. Weight of Antigen	47kDa
Cellular Localization	Secreted
Species Reactivity	Human
Positive Control	Human prostate or testis.

*Optimal dilution for a specific application should be determined.

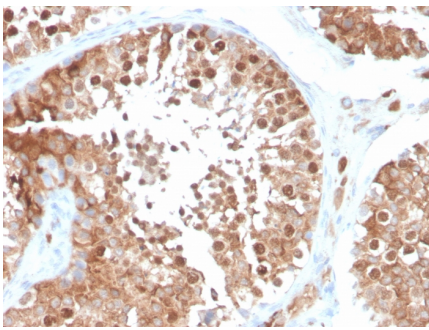
Product Images for Inhibin, alpha (INHA) (Gonadal Cell Marker) Antibody



Formalin-fixed, paraffin-embedded human testis stained with Inhibin, alpha Mouse Monoclonal Antibody (INHA/4266).



SDS-PAGE Analysis of Purified Inhibin, alpha Mouse Monoclonal Antibody (INHA/4266). Confirmation of Integrity and Purity of Antibody.



Formalin-fixed, paraffin-embedded human testis stained with Inhibin, alpha Mouse Monoclonal Antibody (INHA/4266).

Specificity & Comments

It recognizes a 47kDa protein, which is identified as alpha sub-unit of Inhibin. It is a gonadal protein that preferentially suppresses the secretion of pituitary follicle-stimulating hormone (FSH). Inhibin comprises two subunits, Inhibin A and Inhibin B. Each subunit consists of the same α subunit, covalently linked to 1 of 2 distinct subunits, β -1 or β -2. Originally isolated from ovarian follicular fluid and characterized as a disulphide-linked dimeric glycoprotein, inhibin belongs to the transforming growth factor β (TGF β) superfamily. Antibodies against Inhibin are useful in making a differentiation between adrenal cortical tumors and renal cell carcinoma. Sex cord stromal tumors of the ovary as well as trophoblastic tumors also demonstrate cytoplasmic positivity. Inhibin antibody is also used to make the differential diagnosis of intra-uterine vs. ectopic pregnancy in endometrial curetting.

Limitations and Warranty

This antibody is available for research use only and is not approved for use in diagnosis. There are no warranties, expressed or implied, which extend beyond this description. Company is not liable for any personal injury or economic loss resulting from this product.

Supplied As

200ug/ml of Ab purified from Bioreactor Concentrate by Protein A/G. Prepared in 1mM PBS with 0.05% BSA & 0.05% azide. Also available WITHOUT BSA & azide at 1.0mg/ml.

Storage and Stability

Antibody with azide - store at 2 to 8 °C. Antibody without azide - store at -20 to -80 °C. Antibody is stable for 24 months. Non-hazardous. No MSDS required.

Research Areas

Cardiovascular
