

## Recombinant Interleukin 10 (IL10) (Immuno-regulation Marker) Antibody

Rabbit Monoclonal Antibody [Clone IL10/2651R]

Catalog No	Format	Size
3586-RBM1-P0	Purified Ab with BSA and Azide at 200ug/ml	20 ug
3586-RBM1-P1	Purified Ab with BSA and Azide at 200ug/ml	100 ug
3586-RBM1-P1ABX	Purified Ab WITHOUT BSA and Azide at 1.0mg/ml	100 ug

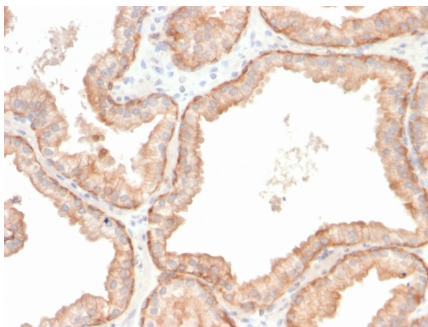
Applications	Tested Dillution	Note
Immunohistochemistry (IHC)	1-2ug/ml	30 min at RT. Staining of formalin-fixed tissues requires heating tissue sections in 10mM Tris with 1mM EDTA, pH 9.0, for 45 min at 95°C followed by cooling at RT for 20 minutes
Western Blot (WB)	2-4ug/ml	

### Product Details

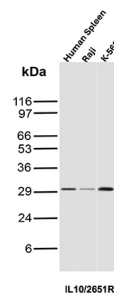
<b>Clone</b>	IL10/2651R
<b>Gene Name</b>	IL10
<b>Immunogen</b>	Recombinant full-length human Interleukin 10 (IL10) protein
<b>Host</b>	Rabbit
<b>Clonality</b>	Monoclonal
<b>Isotype / Light Chain</b>	IgG / Kappa
<b>Mol. Weight of Antigen</b>	20kDa (Monomer); 37kDa (Dimer)
<b>Cellular Localization</b>	Secreted
<b>Species Reactivity</b>	Human
<b>Positive Control</b>	Human adrenal or lymph node tissues (IHC), Human Spleen, Raji, K-562

\*Optimal dilution for a specific application should be determined.

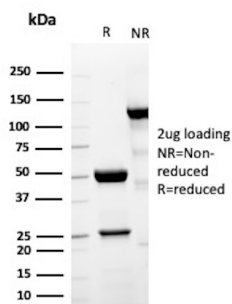
### Product Images for Recombinant Interleukin 10 (IL10) (Immuno-regulation Marker) Antibody



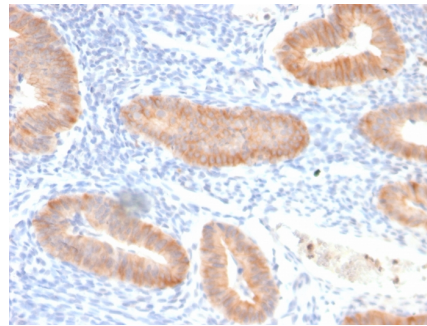
Formalin-fixed, paraffin-embedded human prostate carcinoma stained with Interleukin 10 Recombinant Rabbit Monoclonal Antibody (IL10/2651R).



Western Blot Analysis of Human Spleen, Raji, and K-562 lysates using IL-10 Recombinant Rabbit Monoclonal Antibody (IL10/2651R).



SDS-PAGE Analysis of Purified Interleukin-10 Recombinant Rabbit Monoclonal Antibody (IL10/2651R). Confirmation of Purity and Integrity of Antibody.



Formalin-fixed, paraffin-embedded human endo-cervical carcinoma stained with Interleukin 10 Recombinant Rabbit Monoclonal Antibody (IL10/2651R).

### Specificity & Comments

Interleukin 10 (IL10) is a cytokine produced primarily by monocytes and to a lesser extent by lymphocytes. This cytokine has pleiotropic effects in immuno-regulation and inflammation. It down-regulates the expression of Th1 cytokines, MHC class II antigens, and costimulatory molecules on macrophages. It also enhances B cell survival, proliferation, and antibody production. This cytokine can block NF-kappa B activity, and is involved in the regulation of the JAK-STAT signaling pathway. Knockout studies in mice suggested the function of this cytokine as an essential immuno-regulator in the intestinal tract. Mutations in this gene are associated with an increased susceptibility to HIV-1 infection and rheumatoid arthritis.

### Limitations and Warranty

This antibody is available for research use only and is not approved for use in diagnosis. There are no warranties, expressed or implied, which extend beyond this description. Company is not liable for any personal injury or economic loss resulting from this product.

### Supplied As

200ug/ml of Ab Purified by Protein A. Prepared in 10mM PBS with 0.05% BSA & 0.05% azide. Also available WITHOUT BSA & azide at 1.0mg/ml.

### Storage and Stability

Antibody with azide - store at 2 to 8°C. Antibody without azide - store at -20 to -80°C. Antibody is stable for 24 months. Non-hazardous. No MSDS required.

### Research Areas

AKT Signaling, Cardiovascular, Cytokine Signaling, Hematopoietic Stem Cells, Immunology, Infectious Disease, Neuroinflammation