

## Recombinant Interleukin-2 (IL-2) Antibody

Rabbit Monoclonal Antibody [Clone IL2/7050R]

Catalog No	Format	Size
3558-RBM9-P0	Purified Ab with BSA and Azide at 200ug/ml	20 ug
3558-RBM9-P1	Purified Ab with BSA and Azide at 200ug/ml	100 ug
3558-RBM9-P1ABX	Purified Ab WITHOUT BSA and Azide at 1.0mg/ml	100 ug

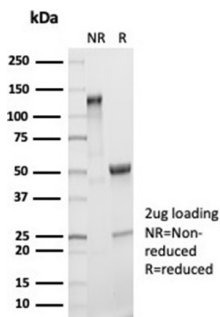
Applications	Tested Dillution	Note
Immunohistochemistry (IHC)	1-2ug/ml	30 min at RT. Staining of formalin-fixed tissues requires heating tissue sections in 10mM Tris with 1mM EDTA, pH 9.0, for 45 min at 95°C followed by cooling at RT for 20 minutes

### Product Details

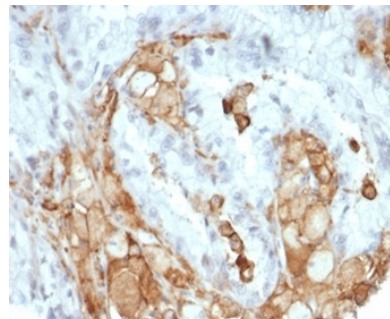
<b>Clone</b>	IL2/7050R
<b>Gene Name</b>	IL-2
<b>Immunogen</b>	Recombinant fragment (around aa 21-153) of human IL2 protein (exact sequence is proprietary)
<b>Host</b>	Rabbit
<b>Clonality</b>	Monoclonal
<b>Isotype / Light Chain</b>	IgG / Kappa
<b>Mol. Weight of Antigen</b>	15kDa
<b>Cellular Localization</b>	Secreted
<b>Species Reactivity</b>	Human
<b>Positive Control</b>	Human thymus or tonsil tissue.

\*Optimal dilution for a specific application should be determined.

### Product Images for Recombinant Interleukin-2 (IL-2) Antibody



SDS-PAGE Analysis of Purified IL-2 Recombinant Rabbit Monoclonal Antibody (IL2/7050R). Confirmation of Purity and Integrity of Antibody.



Formalin-fixed, paraffin-embedded human colon carcinoma stained with Interleukin-2 (IL-2) Recombinant Rabbit Monoclonal Antibody (IL2/7050R).  
HIER: Tris/EDTA, pH9.0, 45min. 2°C: HRP-polymer, 30min. DAB, 5min.

### Specificity & Comments

Interleukin-2 (IL-2) is a T cell stimulatory cytokine that induces T cell proliferation and NK cell proliferation and activation. Produced by T-cells in response to antigenic or mitogenic stimulation, this protein is required for T-cell proliferation and other activities crucial to regulation of the immune response. Can stimulate B-cells, monocytes, lymphokine-activated killer cells, natural killer cells, and glioma cells. The receptor of this cytokine is a heterotrimeric protein complex whose gamma chain is also shared by interleukin 4 (IL4) and interleukin 7 (IL7). IL-2 induces CTLA-4 and also functions as a survival factor for lymphocytes.

### Supplied As

200ug/ml of Ab purified from Bioreactor Concentrate by Protein A/G. Prepared in 10mM PBS with 0.05% BSA & 0.05% azide. Also available WITHOUT BSA & azide at 1.0mg/ml.

### Storage and Stability

Antibody with azide - store at 2 to 8 °C. Antibody without azide - store at -20 to -80 °C. Antibody is stable for 24 months. Non-hazardous. No MSDS required.

### Research Areas

AKT Signaling, Cardiovascular, Cytokine Signaling, Hematopoietic Stem Cells, Immunology, Signal Transduction, Transcription Factors

## Limitations and Warranty

This antibody is available for research use only and is not approved for use in diagnosis. There are no warranties, expressed or implied, which extend beyond this description. Company is not liable for any personal injury or economic loss resulting from this product.

---