

Interleukin-1beta (IL-1beta) Antibody

Mouse Monoclonal Antibody [Clone IL1B/6687]

| Catalog No | Format | Size |
|------------------|---|--------|
| 3553-MSM12-P0 | Purified Ab with BSA and Azide at 200ug/ml | 20 ug |
| 3553-MSM12-P1 | Purified Ab with BSA and Azide at 200ug/ml | 100 ug |
| 3553-MSM12-P1ABX | Purified Ab WITHOUT BSA and Azide at 1.0mg/ml | 100 ug |

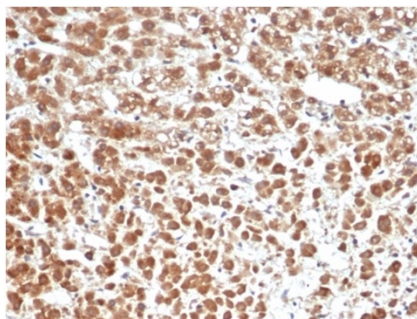
| Applications | Tested Dillution | Note |
|----------------------------|------------------|---|
| Immunohistochemistry (IHC) | 1-2ug/ml | 30 min at RT. Staining of formalin-fixed tissues requires heating tissue sections in 10mM Tris with 1mM EDTA, pH 9.0, for 45 min at 95°C followed by cooling at RT for 20 minutes |

Product Details

| | |
|------------------------|---|
| Clone | IL1B/6687 |
| Gene Name | IL1B |
| Immunogen | Recombinant fragment of human IL1B protein (exact sequence is proprietary) |
| Host | Mouse |
| Clonality | Monoclonal |
| Isotype / Light Chain | IgG2b / Kappa |
| Mol. Weight of Antigen | 31kDa (proprotein); 17kDa (mature) |
| Cellular Localization | Cytoplasm, Cytosol, Extracellular exosome, Lysosome, Secreted |
| Species Reactivity | Human |
| Positive Control | LPS stimulated human peripheral blood mononuclear cells. Human colon or liver tissue. |

**Optimal dilution for a specific application should be determined.*

Product Images for Interleukin-1beta (IL-1beta) Antibody



Formalin-fixed, paraffin-embedded human adrenal gland stained with Interleukin-1 Beta (IL-1B) Mouse Monoclonal Antibody (IL1B/6687) at 2ug/ml. HIER: Tris/EDTA, pH9.0, 45min. 2°C: HRP-polymer, 30min. DAB, 5min.

Specificity & Comments

Recognizes a protein of 17-31kDa, identified as interleukin 1beta. It shows no cross-reaction with interleukin 1alpha. Epitopes of MAb IL1B/463 and IL1B/6687 are different and provide a good pair for developing an ELISA. This cytokine is produced by activated macrophages as a proprotein, which is proteolytically processed to its active form by caspase 1 (CASP1/ICE). This cytokine is an important mediator of the inflammatory response, and is involved in a variety of cellular activities, including cell proliferation, differentiation, and apoptosis. The induction of cyclooxygenase-2 (PTGS2/COX2) by this cytokine in the central nervous system (CNS) is found to contribute to inflammatory pain hypersensitivity. This gene and eight other interleukin 1 family genes form a cytokine gene cluster on chromosome 2.

Supplied As

200ug/ml of Ab purified from Bioreactor Concentrate by Protein A/G. Prepared in 10mM PBS with 0.05% BSA & 0.05% azide. Also available WITHOUT BSA & azide at 1.0mg/ml.

Storage and Stability

Antibody with azide - store at 2 to 8 °C. Antibody without azide - store at -20 to -80 °C. Antibody is stable for 24 months. Non-hazardous. No MSDS required.

Research Areas

Cardiovascular, Immunology, AKT Signaling, Cytokine Signaling, Infectious Disease, MAPK Signaling, Neuroinflammation

Limitations and Warranty

This antibody is available for research use only and is not approved for use in diagnosis. There are no warranties, expressed or implied, which extend beyond this description. Company is not liable for any personal injury or economic loss resulting from this product.
