

Recombinant Prostate Specific Antigen (PSA) Antibody

Rabbit Monoclonal Antibody [Clone KLK3/4551R]

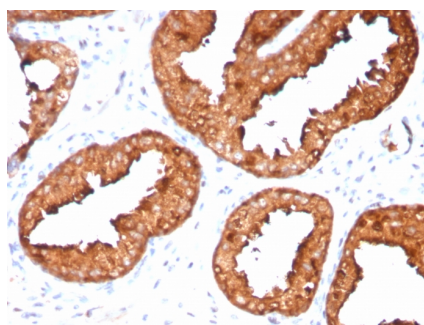
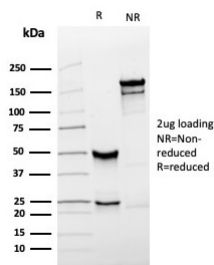
Catalog No	Format	Size
354-RBM11-P0	Purified Ab with BSA and Azide	200ug/ml
354-RBM11-P1	Purified Ab with BSA and Azide	200ug/ml
354-RBM11-P1ABX	Purified Ab WITHOUT BSA and Azide	1.0mg/ml

Applications	Tested Dillution
Immunohistochemistry (IHC)	1-2ug/ml

Product Details	
Clone	KLK3/4551R
Gene Name	KLK3
Immunogen	Recombinant full-length human KLK3 (PSA) protein
Host	Rabbit
Clonality	Monoclonal
Isotype / Light Chain	IgG / Kappa
Mol. Weight of Antigen	33-34kDa
Cellular Localization	Secreted
Species Reactivity	Human
Positive Control	PC12 cells. Normal prostate or prostate carcinoma tissues.

**Optimal dilution for a specific application should be determined.*

Product Images for Recombinant Prostate Specific Antigen (PSA) Antibody



SDS-PAGE Analysis of Purified PSA Recombinant Rabbit Monoclonal Antibody (KLK3/4551R). Confirmation of Integrity and Purity of Antibody.

Formalin-fixed, paraffin-embedded human prostate carcinoma stained with PSA Recombinant Rabbit Monoclonal Antibody (KLK3/4551R).

Specificity & Comments

Recognizes a single protein of 33-34kDa, identified as the prostate specific antigen (PSA). This MAb is highly specific to PSA and stains prostatic secretory and ductal epithelium in both normal and neoplastic tissues. PSA is a chymotrypsin-like serine protease (kallikrein family) exclusively produced by the prostate epithelium, and abundant in seminal fluid. PSA can be detected in the sera of patients with prostatic carcinoma. It is predominantly complexed to a liver-derived serine protease inhibitor, alpha-1-antichymotrypsin (ACT). A higher proportion of serum PSA is complexed to ACT in prostate cancer than in benign prostate hyperplasia. This MAb makes an excellent pair with MAb 1A7G6B6 for PSA tests.

Research Areas

Cardiovascular, Signal Transduction

Known Applications & Suggested Dilutions

Immunohistochemistry (Formalin-fixed) (1-2ug/ml for 30 minutes at RT),(Staining of formalin-fixed tissues requires heating tissue sections in 10mM Tris with 1mM EDTA, pH 9.0, for 45 min at 95 °C followed by cooling at RT for 20 minutes),Optimal dilution for a specific application should be determined.

Limitations and Warranty

This antibody is available for research use only and is not approved for use in diagnosis.

There are no warranties, expressed or implied, which extend beyond this description. Company is not liable for any personal injury or economic loss resulting from this product.

Supplied As

200ug/ml of Ab purified from Bioreactor Concentrate by Protein A/G. Prepared in 10mM PBS with 0.05% BSA & 0.05% azide. Also available WITHOUT BSA & azide at 1.0mg/ml.

Storage and Stability

Antibody with azide - store at 2 to 8 °C. Antibody without azide - store at -20 to -80 °C. Antibody is stable for 24 months. Non-hazardous. No MSDS required.