

## Private: Prostate Specific Antigen (PSA) Antibody

Mouse Monoclonal Antibody [Clone 1A7]

Catalog No	Format	Size
354-MSM3-P0	Purified Ab with BSA and Azide at 200ug/ml	20 ug
354-MSM3-P1	Purified Ab with BSA and Azide at 200ug/ml	100 ug
354-MSM3-P1ABX	Purified Ab WITHOUT BSA and Azide at 1.0mg/ml	100 ug

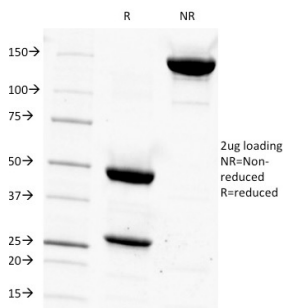
Applications	Tested Dillution	Note
Flow Cytometry (Flow)	1-2ug/million cells	
Immunofluorescence (IF)	1-3ug/ml	
Immunohistochemistry (IHC)	1-2ug/ml	30 min at RT. Staining of formalin-fixed tissues requires heating tissue sections in 10mM Tris with 1mM EDTA, pH 9.0, for 45 min at 95°C followed by cooling at RT for 20 minutes

### Product Details

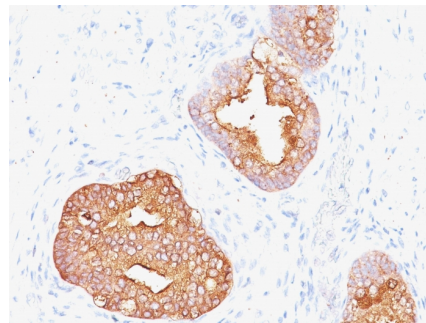
<b>Clone</b>	1A7
<b>Gene Name</b>	KLK3
<b>Immunogen</b>	PSA (p30) from human sperm plasma
<b>Host</b>	Mouse
<b>Clonality</b>	Monoclonal
<b>Isotype / Light Chain</b>	IgG1 / Kappa
<b>Mol. Weight of Antigen</b>	33-34kDa
<b>Cellular Localization</b>	Secreted
<b>Species Reactivity</b>	Cat, Human
<b>Positive Control</b>	PC-3 or LNCaP cell lysates (WB). Prostate tissue (IHC). LNCaP cells (IF).

\*Optimal dilution for a specific application should be determined.

### Product Images for Private: Prostate Specific Antigen (PSA) Antibody



SDS-PAGE Analysis of Purified PSA Mouse Monoclonal Antibody (1A7). Confirmation of Purity and Integrity of Antibody.



Formalin-fixed, paraffin-embedded human Prostate Carcinoma stained with Prostate Specific Antigen Mouse Monoclonal Antibody (1A7).

**Specificity & Comments**

Recognizes a single protein of 33-34kDa, identified as the prostate specific antigen (PSA). This MAb is highly specific to PSA and stains prostatic secretory and ductal epithelium in both normal and neoplastic tissues. PSA is a chymotrypsin-like serine protease (kallikrein family) exclusively produced by the prostate epithelium, and abundant in seminal fluid. PSA can be detected in the sera of patients with prostatic carcinoma. It is predominantly complexed to a liver-derived serine protease inhibitor, alpha-1-antichymotrypsin (ACT). A higher proportion of serum PSA is complexed to ACT in prostate cancer than in benign prostate hyperplasia. This MAb makes an excellent pair with MAb A67-B/E3 for PSA tests.

---

**Limitations and Warranty**

This antibody is available for research use only and is not approved for use in diagnosis. There are no warranties, expressed or implied, which extend beyond this description. Company is not liable for any personal injury or economic loss resulting from this product.

---

**Supplied As**

200ug/ml of Ab Purified from Bioreactor Concentrate by Protein A/G. Prepared in 10mM PBS with 0.05% BSA & 0.05% azide. Also available WITHOUT BSA & azide at 1.0mg/ml.

---

**Storage and Stability**

Antibody with azide - store at 2 to 8°C. Antibody without azide - store at -20 to -80°C. Antibody is stable for 24 months. Non-hazardous. No MSDS required.

---

**Research Areas**

Cardiovascular, Signal Transduction

---