

Recombinant immunoglobulin lambda locus Antibody

Rabbit Monoclonal Antibody [Clone LLC/3774R]

Catalog No	Format	Size
3535-RBM10-P0	Purified Ab with BSA and Azide at 200ug/ml	20 ug
3535-RBM10-P1	Purified Ab with BSA and Azide at 200ug/ml	100 ug
3535-RBM10-P1ABX	Purified Ab WITHOUT BSA or Azide at 1.0mg/ml	100 ug

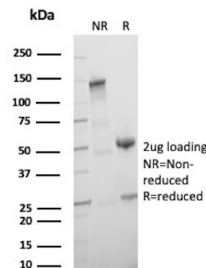
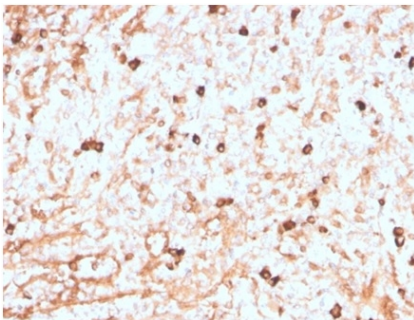
Applications	Tested Dillution	Note
Immunohistochemistry (IHC)	1-2ug/ml	30 min at RT. Staining of formalin-fixed tissues requires heating tissue sections in 10mM Tris with 1mM EDTA, pH 9.0, for 45 min at 95°C followed by cooling at RT for 20 minutes
Western Blot (WB)	2-4ug/ml	

Product Details

Clone	LLC/3774R
Immunogen	purified human IgG
Host	Rabbit
Clonality	Monoclonal
Isotype / Light Chain	IgG / Kappa
Species Reactivity	Human
Positive Control	Human tonsil or spleen tissue (IHC). Human Serum and Spleen.

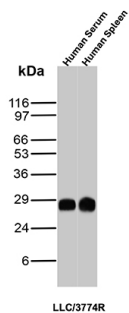
**Optimal dilution for a specific application should be determined.*

Product Images for Recombinant immunoglobulin lambda locus Antibody

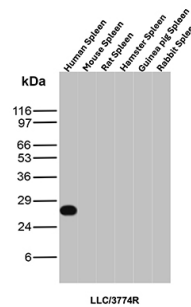


Formalin-fixed, paraffin-embedded human spleen stained with Lambda Light Chain Recombinant Rabbit Monoclonal (LLC/3774R).

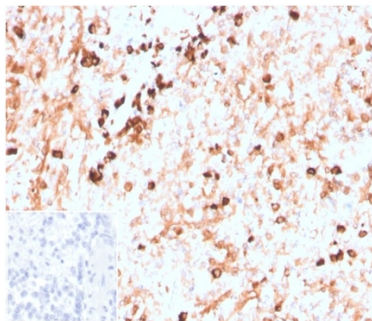
SDS-PAGE Analysis of Purified Lambda-Light-Chain Mouse Monoclonal Antibody(LLC/3774R). Confirmation of Purity and Integrity of Antibody.



Western Blot Analysis of Human Serum and Human Spleen tissue lysates using Lambda Light Chain Recombinant Rabbit Monoclonal Antibody (LLC/3774R).



Western Blot Analysis of Spleen tissue lysates of different species using Lambda Light Chain Recombinant Rabbit Monoclonal Antibody (LLC/3774R).



Formalin-fixed, paraffin-embedded human spleen stained with Lambda Light Chain Recombinant Rabbit Monoclonal (LLC/3774R). Inset: PBS instead of primary antibody; secondary only negative control.

Specificity & Comments

This MAb is specific to lambda light chain of immunoglobulin and shows no cross-reaction with lambda light chain or any of the five heavy chains. In mammals, the two light chains in an antibody are always identical, with only one type of light chain, kappa or lambda. The ratio of Kappa to Lambda is 70:30. However, with the occurrence of multiple myeloma or other B-cell malignancies this ratio is disturbed. Antibody to the lambda light chain is reportedly useful in the identification of leukemias, plasmacytomas, and certain non-Hodgkin's lymphomas. Demonstration of clonality in lymphoid infiltrates indicates that the infiltrate is malignant.

Limitations and Warranty

This antibody is available for research use only and is not approved for use in diagnosis. There are no warranties, expressed or implied, which extend beyond this description. Company is not liable for any personal injury or economic loss resulting from this product.

Supplied As

200ug/ml of Ab produced in a mammalian-based expression system. Prepared in 10mM PBS with 0.05% BSA & 0.05% azide. Also available WITHOUT BSA & azide at 1.0mg/ml.

Storage and Stability

Antibody with azide - store at 2 to 8 °C. Antibody without azide - store at -20 to -80 °C. Antibody is stable for 24 months. Non-hazardous. No MSDS required.
