

Recombinant Lambda Light Chain (B-Cell Marker) Antibody

Mouse Monoclonal Antibody [Clone rLLC/1738]

| Catalog No | Format | Size |
|-----------------|---|--------|
| 3535-MSM9-P0 | Purified Ab with BSA and Azide at 200ug/ml | 20 ug |
| 3535-MSM9-P1 | Purified Ab with BSA and Azide at 200ug/ml | 100 ug |
| 3535-MSM9-P1ABX | Purified Ab WITHOUT BSA and Azide at 1.0mg/ml | 100 ug |

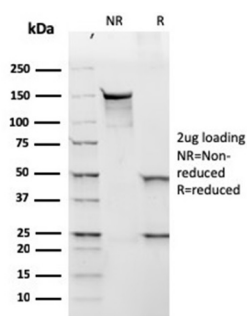
| Applications | Tested Dillution | Note |
|----------------------------|------------------|---|
| Immunohistochemistry (IHC) | 1-2ug/ml | 30 min at RT. Staining of formalin-fixed tissues requires heating tissue sections in 10mM Tris with 1mM EDTA, pH 9.0, for 45 min at 95°C followed by cooling at RT for 20 minutes |
| Western Blot (WB) | 2-4ug/ml | |

Product Details

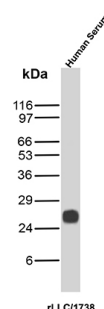
| | |
|-------------------------------|---|
| Clone | rLLC/1738 |
| Gene Name | IGLV1-51 |
| Immunogen | Recombinant full-length human IGL protein |
| Host | Mouse |
| Clonality | Monoclonal |
| Isotype / Light Chain | IgG1 / Kappa |
| Mol. Weight of Antigen | ~22.5kDa |
| Cellular Localization | Cell membrane, Secreted |
| Species Reactivity | Human |
| Positive Control | Human tonsil or spleen tissue (IHC). Human Serum. |

**Optimal dilution for a specific application should be determined.*

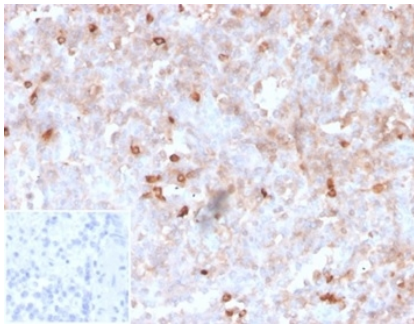
Product Images for Recombinant Lambda Light Chain (B-Cell Marker) Antibody



SDS-PAGE Analysis Purified Lambda Lt. Chain Recombinant Mouse Monoclonal Antibody (rLLC/1738). Confirmation of Purity and Integrity of Antibody.



Western Blot Analysis of Human Serum tissue lysate using Lambda Light Chain Recombinant Mouse Monoclonal Antibody (rLLC/1738).



Formalin-fixed, paraffin-embedded human spleen stained with Lambda Lt. Chain Recombinant Mouse Monoclonal Antibody (rLLC/1738). Inset: PBS instead of primary antibody; secondary only negative control.

Specificity & Comments

This MAb is specific to lambda light chain of immunoglobulin and shows no cross-reaction with lambda light chain or any of the five heavy chains. In mammals, the two light chains in an antibody are always identical, with only one type of light chain, kappa or lambda. The ratio of Kappa to Lambda is 70:30. However, with the occurrence of multiple myeloma or other B-cell malignancies this ratio is disturbed. Antibody to the lambda light chain is reportedly useful in the identification of leukemias, plasmacytomas, and certain non-Hodgkin's lymphomas. Demonstration of clonality in lymphoid infiltrates indicates that the infiltrate is malignant.

Limitations and Warranty

This antibody is available for research use only and is not approved for use in diagnosis. There are no warranties, expressed or implied, which extend beyond this description. Company is not liable for any personal injury or economic loss resulting from this product.

Supplied As

200ug/ml of Ab purified from Bioreactor Concentrate by Protein A/G. Prepared in 10mM PBS with 0.05% BSA & 0.05% azide. Also available WITHOUT BSA & azide at 1.0mg/ml.

Storage and Stability

Antibody with azide - store at 2 to 8 °C. Antibody without azide - store at -20 to -80 °C. Antibody is stable for 24 months. Non-hazardous. No MSDS required.