

Lambda Light Chain (B-Cell Marker) Antibody

Mouse Monoclonal Antibody [Clone LcN-2]

Catalog No	Format	Size
3535-MSM3-CF488-100T	Purified Ab conjugated to CF488	0.5 ml at 100ug/ml

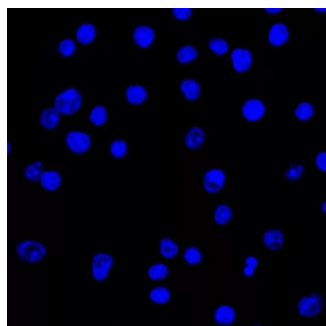
Applications	Tested Dillution	Note
Flow Cytometry (Flow)	1-2ug/million cells	
Immunofluorescence (IF)	1-3ug/ml	
Immunohistochemistry (IHC)	1-2ug/ml	30 min at RT. Staining of formalin-fixed tissues requires heating tissue sections in 10mM Tris with 1mM EDTA, pH 9.0, for 45 min at 95°C followed by cooling at RT for 20 minutes
Western Blot (WB)	2-4ug/ml	

Product Details

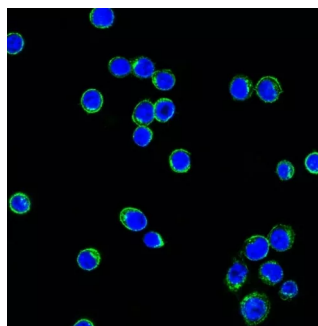
Clone	LcN-2
Gene Name	IGLV1-51
Immunogen	Purified human IgG
Host	Mouse
Clonality	Monoclonal
Isotype / Light Chain	IgG2a / Kappa
Mol. Weight of Antigen	~22.5kDa
Cellular Localization	Cell membrane, Cell surface, Secreted
Species Reactivity	Human
Positive Control	293T

**Optimal dilution for a specific application should be determined.*

Product Images for Lambda Light Chain (B-Cell Marker) Antibody



Confocal Immunofluorescent analysis of Ramos cells using CF488-labeled Isotype Control Monoclonal Antibody (IgG2a) (Green). DAPI was used to stain the cell nuclei (blue). (Negative Control)



Confocal Immunofluorescent analysis of Ramos cells using CF488-labeled Lambda Light Chain Monoclonal Antibody (LcN-2) (green). DAPI was used to stain the cell nuclei (blue).

Specificity & Comments

This MAb is specific to lambda light chain of immunoglobulin and shows no cross-reaction with lambda light chain or any of the five heavy chains. In mammals, the two light chains in an antibody are always identical, with only one type of light chain, kappa or lambda. The ratio of Kappa to Lambda is 70:30. However, with the occurrence of multiple myeloma or other B-cell malignancies this ratio is disturbed. Antibody to the lambda light chain is reportedly useful in the identification of leukemias, plasmacytomas, and certain non-Hodgkin's lymphomas. Demonstration of clonality in lymphoid infiltrates indicates that the infiltrate is malignant.

Limitations and Warranty

This antibody is available for research use only and is not approved for use in diagnosis. There are no warranties, expressed or implied, which extend beyond this description. Company is not liable for any personal injury or economic loss resulting from this product.

Supplied As

Antibody purified from Bioreactor Concentrate by Protein A/G and conjugated to various reporter molecules. Prepared in 10mM PBS with 0.05% BSA and 0.05% azide.

Storage and Stability

Antibody with azide - store at 2 to 8°C. Antibody without azide - store at -20 to -80°C. Antibody is stable for 24 months. Non-hazardous. No MSDS required.
