

Recombinant Lambda Light Chain (B-Cell Marker) Antibody

Mouse Monoclonal Antibody [Clone rLLC/3777]

Catalog No	Format	Size
3535-MSM11-P0	Purified Ab with BSA and Azide at 200ug/ml	20 ug
3535-MSM11-P1	Purified Ab with BSA and Azide at 200ug/ml	100 ug
3535-MSM11-P1ABX	Purified Ab WITHOUT BSA and Azide at 1.0mg/ml	100 ug

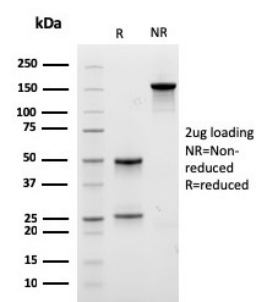
Applications	Tested Dillution	Note
Immunohistochemistry (IHC)	1-2ug/ml	30 min at RT. Staining of formalin-fixed tissues requires heating tissue sections in 10mM Tris with 1mM EDTA, pH 9.0, for 45 min at 95°C followed by cooling at RT for 20 minutes
Western Blot (WB)	2-4ug/ml	

Product Details

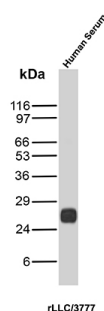
Clone	rLLC/3777
Gene Name	IGLV1-51
Immunogen	Recombinant full-length human IGL protein
Host	Mouse
Clonality	Monoclonal
Isotype / Light Chain	IgG1 / Kappa
Mol. Weight of Antigen	~22.5kDa
Cellular Localization	Cell membrane, Secreted
Species Reactivity	Human
Positive Control	293T, Raji or hPBL cells. Tonsil or Spleen. Human Serum.

**Optimal dilution for a specific application should be determined.*

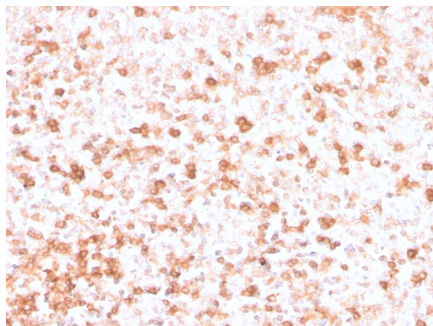
Product Images for Recombinant Lambda Light Chain (B-Cell Marker) Antibody



SDS-PAGE Analysis of Purified LLC Recombinant Mouse Monoclonal Antibody (rLLC/3777). Confirmation of Integrity and Purity of Antibody



Western Blot Analysis of Human Serum tissue lysate using Lambda Light Chain Recombinant Mouse Monoclonal Antibody (rLLC/3777).



Formalin-fixed, paraffin-embedded human Tonsil stained with Lambda Light Chain Recombinant Mouse Monoclonal Antibody (rLLC/3777).

Specificity & Comments

This MAb is specific to lambda light chain of immunoglobulin and shows no cross-reaction with lambda light chain or any of the five heavy chains. In mammals, the two light chains in an antibody are always identical, with only one type of light chain, kappa or lambda. The ratio of Kappa to Lambda is 70:30. However, with the occurrence of multiple myeloma or other B-cell malignancies this ratio is disturbed. Antibody to the lambda light chain is reportedly useful in the identification of leukemias, plasmacytomas, and certain non-Hodgkin's lymphomas. Demonstration of clonality in lymphoid infiltrates indicates that the infiltrate is malignant.

Supplied As

200ug/ml of Ab Purified from Bioreactor Concentrate by Protein A/G. Prepared in 10mM PBS with 0.05% BSA & 0.05% azide. Also available WITHOUT BSA & azide at 1.0mg/ml.

Storage and Stability

Antibody with azide - store at 2 to 8°C. Antibody without azide - store at -20 to -80°C. Antibody is stable for 24 months. Non-hazardous. No MSDS required.

Limitations and Warranty

This antibody is available for research use only and is not approved for use in diagnosis. There are no warranties, expressed or implied, which extend beyond this description. Company is not liable for any personal injury or economic loss resulting from this product.