

Recombinant Kappa Light Chain / IGKC (B-Cell Marker) Antibody

Rabbit Monoclonal Antibody [Clone KLC2886R]

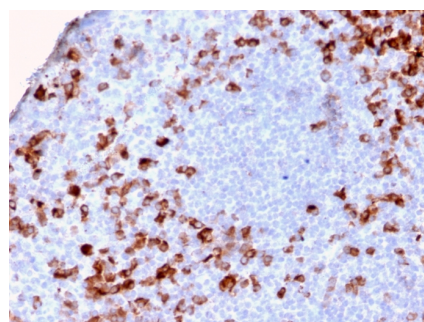
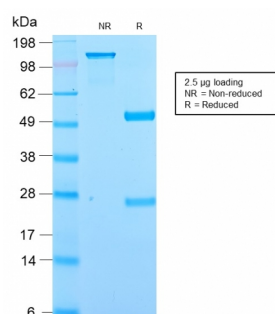
Catalog No	Format	Size
3514-RBM14-P0	Purified Ab with BSA and Azide	200ug/ml
3514-RBM14-P1	Purified Ab with BSA and Azide	200ug/ml
3514-RBM14-P1ABX	Purified Ab WITHOUT BSA and Azide	1.0mg/ml

Applications	Tested Dillution
Immunohistochemistry (IHC)	1-2ug/ml

Product Details	
Clone	KLC2886R
Gene Name	IGKV1D-16
Immunogen	Recombinant full-length human Ig kappa chain
Host	Rabbit
Clonality	Monoclonal
Isotype / Light Chain	IgG / Kappa
Mol. Weight of Antigen	~22.5kDa
Cellular Localization	Cell membrane, Secreted
Species Reactivity	Human
Positive Control	293T, Raji or hPBL cells. Tonsil or Spleen.

**Optimal dilution for a specific application should be determined.*

Product Images for Recombinant Kappa Light Chain / IGKC (B-Cell Marker) Antibody



SDS-PAGE Analysis of Purified Kappa Lt. Chain Recombinant Rabbit Monoclonal (KLC2886R). Confirmation of Purity and Integrity of Antibody.

Formalin-fixed, paraffin-embedded human Tonsil stained with Kappa Lt. Chain Recombinant Rabbit Monoclonal Antibody (KLC/2886R).

Specificity & Comments

This MAb is specific to kappa light chain of immunoglobulin and shows no cross-reaction with lambda light chain or any of the five heavy chains. It recognizes human Ig kappa light chains of both secreted and cell surface immunoglobulin. It detects also free kappa light chains. In mammals, the two light chains in an antibody are always identical, with only one type of light chain, kappa or lambda. The ratio of Kappa to Lambda is 70:30. However, with the occurrence of multiple myeloma or other B-cell malignancies this ratio is disturbed. Antibody to the kappa light chain is reportedly useful in the identification of leukemias, plasmacytomas, and certain non-Hodgkin's lymphomas. Demonstration of clonality in lymphoid infiltrates indicates that the infiltrate is malignant.

Research Areas

B Cell Markers

Known Applications & Suggested Dilutions

Immunohistochemistry (Formalin-fixed) (1-2ug/ml for 30 min at RT)(Staining of formalin-fixed tissues requires heating tissue sections in 10mM Tris with 1mM EDTA, pH 9.0, for 45 min at 95°C followed by cooling at RT for 20 minutes) | Optimal dilution for a specific application should be determined.

Limitations and Warranty

This antibody is available for research use only and is not approved for use in diagnosis.

There are no warranties, expressed or implied, which extend beyond this description. Company is not liable for any personal injury or economic loss resulting from this product.

Supplied As

200ug/ml of Ab Purified from Bioreactor Concentrate by Protein A/G. Prepared in 10mM PBS with 0.05% BSA & 0.05% azide. Also available WITHOUT BSA & azide at 1.0mg/ml.

Storage and Stability

Antibody with azide - store at 2 to 8°C. Antibody without azide - store at -20 to -80°C. Antibody is stable for 24 months. Non-hazardous. No MSDS required.