

Recombinant Kappa Light Chain / IGKC (B-Cell Marker) Antibody

Rabbit Monoclonal Antibody [Clone KLC2289R]

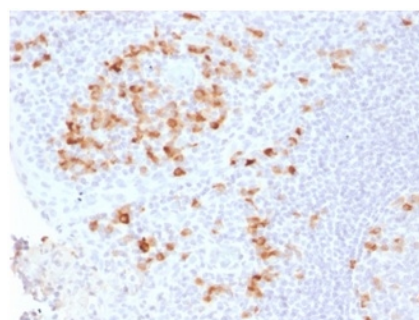
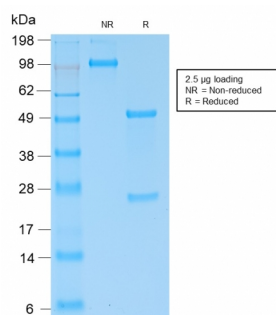
| Catalog No | Format | Size |
|------------------|-----------------------------------|----------|
| 3514-RBM13-P0 | Purified Ab with BSA and Azide | 200ug/ml |
| 3514-RBM13-P1 | Purified Ab with BSA and Azide | 200ug/ml |
| 3514-RBM13-P1ABX | Purified Ab WITHOUT BSA and Azide | 1.0mg/ml |

| Applications | Tested Dillution |
|----------------------------|------------------|
| Immunohistochemistry (IHC) | 1-2ug/ml |

| Product Details | |
|------------------------|---|
| Clone | KLC2289R |
| Gene Name | IGKV1D-16 |
| Immunogen | Recombinant full-length human Ig kappa chain (IGKC) protein |
| Host | Rabbit |
| Clonality | Monoclonal |
| Isotype / Light Chain | IgG / Kappa |
| Mol. Weight of Antigen | ~22.5kDa |
| Cellular Localization | Cell membrane, Secreted |
| Species Reactivity | Human |
| Positive Control | 293T, Raji or hPBL cells. Tonsil or Spleen. |

**Optimal dilution for a specific application should be determined.*

Product Images for Recombinant Kappa Light Chain / IGKC (B-Cell Marker) Antibody



SDS-PAGE Analysis of Purified Kappa Light Chain Rabbit Recombinant Monoclonal (KLC2289R). Confirmation of Purity and Integrity of Antibody.

Formalin-fixed, paraffin-embedded human Tonsil stained with Kappa Light Chain Rabbit Recombinant Monoclonal (KLC2289R).

Specificity & Comments

This MAb is specific to kappa light chain of immunoglobulin and shows no cross-reaction with lambda light chain or any of the five heavy chains. It recognizes human Ig kappa light chains of both secreted and cell surface immunoglobulin. It detects also free kappa light chains. In mammals, the two light chains in an antibody are always identical, with only one type of light chain, kappa or lambda. The ratio of Kappa to Lambda is 70:30. However, with the occurrence of multiple myeloma or other B-cell malignancies this ratio is disturbed. Antibody to the kappa light chain is reportedly useful in the identification of leukemias, plasmacytomas, and certain non-Hodgkin's lymphomas. Demonstration of clonality in lymphoid infiltrates indicates that the infiltrate is malignant.

Research Areas

B Cell Markers

Known Applications & Suggested Dilutions

Immunohistochemistry (Formalin-fixed) (1-2ug/ml for 30 min at RT)(Staining of formalin-fixed tissues requires heating tissue sections in 10mM Tris with 1mM EDTA, pH 9.0, for 45 min at 95degC followed by cooling at RT for 20 minutes) | Optimal dilution for a specific application should be determined.

Limitations and Warranty

This antibody is available for research use only and is not approved for use in diagnosis.

There are no warranties, expressed or implied, which extend beyond this description. Company is not liable for any personal injury or economic loss resulting from this product.

Supplied As

200ug/ml of Ab Purified from Bioreactor Concentrate by Protein A/G. Prepared in 10mM PBS with 0.05% BSA & 0.05% azide. Also available WITHOUT BSA & azide at 1.0mg/ml.

Storage and Stability

Antibody with azide - store at 2 to 8°C. Antibody without azide - store at -20 to -80°C. Antibody is stable for 24 months. Non-hazardous. No MSDS required.