

Recombinant immunoglobulin kappa constant Antibody

Mouse Monoclonal Antibody [Clone rL1C1]

Catalog No	Format	Size
3514-MSM12-P0	Purified Ab with BSA and Azide at 200ug/ml	20 ug
3514-MSM12-P1	Purified Ab with BSA and Azide at 200ug/ml	100 ug
3514-MSM12-P1ABX	Purified Ab WITHOUT BSA or Azide at 1.0mg/ml	100 ug

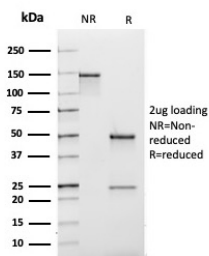
Applications	Tested Dillution	Note
Immunohistochemistry (IHC)	1-2ug/ml	30 min at RT. Staining of formalin-fixed tissues requires heating tissue sections in 10mM Tris with 1mM EDTA, pH 9.0, for 45 min at 95°C followed by cooling at RT for 20 minutes
Western Blot (WB)	2-4ug/ml	

Product Details

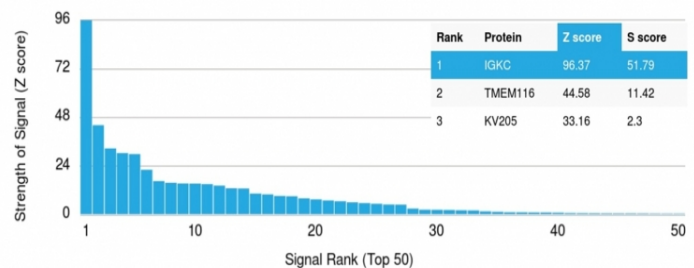
Clone	rL1C1
Immunogen	Immunoglobulin kappa light chain
Host	Mouse
Clonality	Monoclonal
Isotype / Light Chain	IgG1 / Kappa
Species Reactivity	Human
Positive Control	293T, Raji or hPBL cells. Tonsil or Spleen. Human Serum.

*Optimal dilution for a specific application should be determined.

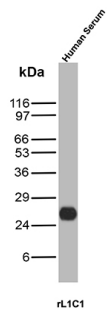
Product Images for Recombinant immunoglobulin kappa constant Antibody



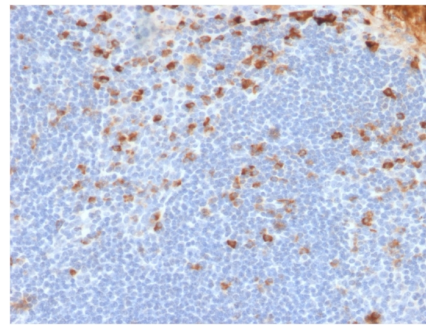
SDS-PAGE Analysis of Purified Kappa Light Chain Mouse Recombinant Monoclonal Ab (rL1C1). Confirmation of Purity and Integrity of Antibody.



Analysis of Protein Array containing more than 19,000 full-length human proteins using Kappa Light Chain Mouse Recombinant Monoclonal Antibody (rL1C1). Z- and S-Score: The Z-score represents the strength of a signal that a monoclonal antibody (Monoclonal Antibody) (in combination with a fluorescently-tagged anti-IgG secondary antibody) produces when binding to a particular protein on the HuProt™ array. Z-scores are described in units of standard deviations (SD's) above the mean value of all signals generated on that array. If targets on HuProt™ are arranged in descending order of the Z-score, the S-score is the difference (also in units of SD's) between the Z-score. S-score therefore represents the relative target specificity of a Monoclonal Antibody to its intended target. A Monoclonal Antibody is considered to be specific to its intended target, if the Monoclonal Antibody has an S-score of at least 2.5. For example, if a Monoclonal Antibody binds to protein X with a Z-score of 43 and to protein Y with a Z-score of 14, then the S-score for the binding of that Monoclonal Antibody to protein X is equal to 29.



Western blot analysis of Human Serum tissue lysate using Kappa Light Chain Recombinant Mouse Monoclonal Antibody (rL1C1).



Formalin-fixed, paraffin-embedded human Tonsil stained with Kappa Light Chain Mouse Recombinant Monoclonal Antibody (rL1C1).

Specificity & Comments

This MAb is specific to kappa light chain of immunoglobulin and shows no cross-reaction with lambda light chain or any of the five heavy chains. In mammals, the two light chains in an antibody are always identical, with only one type of light chain, kappa or lambda. The ratio of kappa to lambda is 70:30. However, with the occurrence of multiple myeloma or other B-cell malignancies this ratio is disturbed. Antibody to the kappa light chain is reportedly useful in the identification of leukemias, plasmacytomas, and certain non-Hodgkin's lymphomas. Demonstration of clonality in lymphoid infiltrates indicates that the infiltrate is malignant.

Limitations and Warranty

This antibody is available for research use only and is not approved for use in diagnosis. There are no warranties, expressed or implied, which extend beyond this description. Company is not liable for any personal injury or economic loss resulting from this product.

Supplied As

200ug/ml of Ab produced in a mammalian-based expression system. Prepared in 10mM PBS with 0.05% BSA & 0.05% azide. Also available WITHOUT BSA & azide at 1.0mg/ml.

Storage and Stability

Antibody with azide - store at 2 to 8 °C. Antibody without azide - store at -20 to -80 °C. Antibody is stable for 24 months. Non-hazardous. No MSDS required.