

IgM (Immunoglobulin Mu Heavy Chain) (B-Cell Marker) Antibody

Mouse Monoclonal Antibody [Clone IGHM/1623]

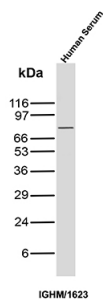
Catalog No	Format	Size
3507-MSM7-P0	Purified Ab with BSA and Azide at 200ug/ml	20 ug
3507-MSM7-P1	Purified Ab with BSA and Azide at 200ug/ml	100 ug
3507-MSM7-P1ABX	Purified Ab WITHOUT BSA and Azide at 1.0mg/ml	100 ug

Applications	Tested Dillution	Note
Western Blot (WB)	2-4ug/ml	

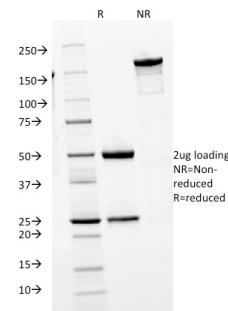
Product Details	
Clone	IGHM/1623
Gene Name	IGHM
Immunogen	Heavy chain of human IgM
Host	Mouse
Clonality	Monoclonal
Isotype / Light Chain	IgG1 / Kappa
Mol. Weight of Antigen	50-75kDa
Cellular Localization	Cell membrane, Secreted
Species Reactivity	Human
Positive Control	293T, Raji or hPBL cells. Tonsil or Spleen. Human Serum

*Optimal dilution for a specific application should be determined.

Product Images for IgM (Immunoglobulin Mu Heavy Chain) (B-Cell Marker) Antibody



Western Blot Analysis of Human Serum lysate using IgM Mouse Monoclonal Antibody (IGHM/1623)



SDS-PAGE Analysis of Purified IgM Mouse Monoclonal Antibody (IGHM/1623). Confirmation of Purity and Integrity of Antibody.

Specificity & Comments

Recognizes a protein of 75kDa, identified as mu heavy chain of human immunoglobulins. It does not cross-react with alpha (IgA), gamma (IgG), epsilon (IgE), or delta (IgD), heavy chains, T-cells, monocytes, granulocytes, or erythrocytes. Monomeric IgM is expressed as a membrane bound antibody on the surface of B cells and as a pentamer when secreted by plasma cells. IgM antibody is prominent in early immune responses to most antigens. Aberrant levels are associated with immune deficiency states, hereditary deficiencies, myeloma, Waldenstrom's macroglobulinemia, chronic infection and hepatocellular disease. This MAb is useful in the identification of leukemias, plasmacytomas, and certain non-Hodgkin's lymphomas. The most common feature of these malignancies is the restricted expression of a single heavy chain class. Demonstration of clonality in lymphoid infiltrates indicates that the infiltrate is clonal and therefore malignant.

2 Union Square, Union City, CA 94587, Tel: 1-866-2-NEOBIO (1-866-263-6246)
orders@NeoBiotechnologies.com, www.NeoBiotechnologies.com

Supplied As

200ug/ml of Ab Purified from Bioreactor Concentrate by Protein A/G. Prepared in 10mM PBS with 0.05% BSA & 0.05% azide. Also available WITHOUT BSA & azide at 1.0mg/ml.

Storage and Stability

Antibody with azide - store at 2 to 8°C. Antibody without azide - store at -20 to -80°C. Antibody is stable for 24 months. Non-hazardous. No MSDS required.

Research Areas

B Cell Markers

Limitations and Warranty

This antibody is available for research use only and is not approved for use in diagnosis. There are no warranties, expressed or implied, which extend beyond this description. Company is not liable for any personal injury or economic loss resulting from this product.
