

Recombinant IgM (Immunoglobulin Mu Heavy Chain) (B-Cell Marker) Antibody

Mouse Monoclonal Antibody [Clone rIGHM/1623]

Catalog No	Format	Size
3507-MSM18-P0	Purified Ab with BSA and Azide at 200ug/ml	20 ug
3507-MSM18-P1	Purified Ab with BSA and Azide at 200ug/ml	100 ug
3507-MSM18-P1ABX	Purified Ab WITHOUT BSA or Azide at 1.0mg/ml	100 ug

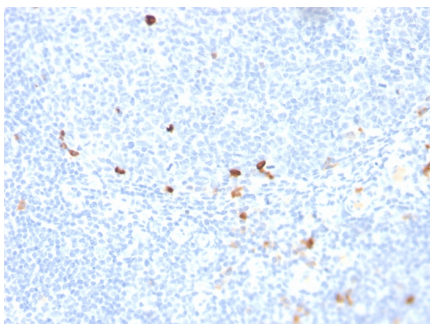
Applications	Tested Dillution	Note
Immunohistochemistry (IHC)	1-2ug/ml	30 min at RT. Staining of formalin-fixed tissues requires heating tissue sections in 10mM Tris with 1mM EDTA, pH 9.0, for 45 min at 95°C followed by cooling at RT for 20 minutes
Western Blot (WB)	2-4ug/ml	

Product Details

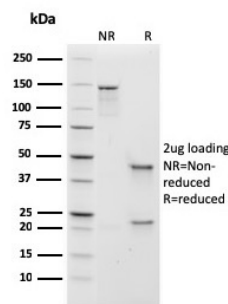
Clone	rIGHM/1623
Immunogen	Recombinant human full-length IGHM protein
Host	Mouse
Clonality	Monoclonal
Isotype / Light Chain	IgG1 / Kappa
Species Reactivity	Human
Positive Control	293T, Raji or hPBL cells. Human tonsil or spleen (IHC).

*Optimal dilution for a specific application should be determined.

Product Images for Recombinant IgM (Immunoglobulin Mu Heavy Chain) (B-Cell Marker) Antibody



Formalin-fixed, paraffin-embedded human tonsil stained with IgM Recombinant Mouse Monoclonal Antibody (rIGHM/1623).



SDS-PAGE Analysis of Purified IgM Recombinant Mouse Monoclonal Antibody (rIGHM/1623). Confirmation of Purity and Integrity of Antibody.

Specificity & Comments

Recognizes a protein of 75kDa, identified as mu heavy chain of human immunoglobulins. It does not cross-react with alpha (IgA), gamma (IgG), epsilon (IgE), or delta (IgD), heavy chains, T-cells, monocytes, granulocytes, or erythrocytes. Monomeric IgM is expressed as a membrane bound antibody on the surface of B cells and as a pentamer when secreted by plasma cells. IgM antibody is prominent in early immune responses to most antigens. Aberrant levels are associated with immune deficiency states, hereditary deficiencies, myeloma, Waldenstrom's macroglobulinemia, chronic infection and hepatocellular disease. This MAb is useful in the identification of leukemias, plasmacytomas, and certain non-Hodgkin s lymphomas. The most common feature of these malignancies is the restricted expression of a single heavy chain class. Demonstration of clonality in lymphoid infiltrates indicates that the infiltrate is clonal and therefore malignant.

Supplied As

200ug/ml of Ab produced in a mammalian-based expression system. Prepared in 10mM PBS with 0.05% BSA & 0.05% azide. Also available WITHOUT BSA & azide at 1.0mg/ml.

Storage and Stability

Antibody with azide - store at 2 to 8 °C. Antibody without azide - store at -20 to -80 °C. Antibody is stable for 24 months. Non-hazardous. No MSDS required.

Limitations and Warranty

This antibody is available for research use only and is not approved for use in diagnosis. There are no warranties, expressed or implied, which extend beyond this description. Company is not liable for any personal injury or economic loss resulting from this product.
