

## IgG (Immunoglobulin Gamma Heavy Chain) (B-Cell Marker) Antibody

Mouse Monoclonal Antibody [Clone IG266]

Catalog No	Format	Size
3500-MSM2-P0	Purified Ab with BSA and Azide at 200ug/ml	20 ug
3500-MSM2-P1	Purified Ab with BSA and Azide at 200ug/ml	100 ug
3500-MSM2-P1ABX	Purified Ab WITHOUT BSA and Azide at 1.0mg/ml	100 ug

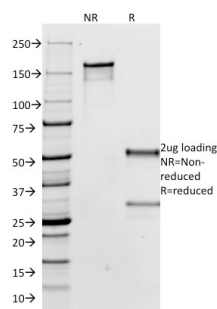
Applications	Tested Dillution	Note
Flow Cytometry (Flow)	1-2ug/million cells	
Immunofluorescence (IF)	1-3ug/ml	
Immunohistochemistry (IHC)	1-2ug/ml	30 min at RT. Staining of formalin-fixed tissues requires heating tissue sections in 10mM Tris with 1mM EDTA, pH 9.0, for 45 min at 95°C followed by cooling at RT for 20 minutes
Western Blot (WB)	2-4ug/ml	

### Product Details

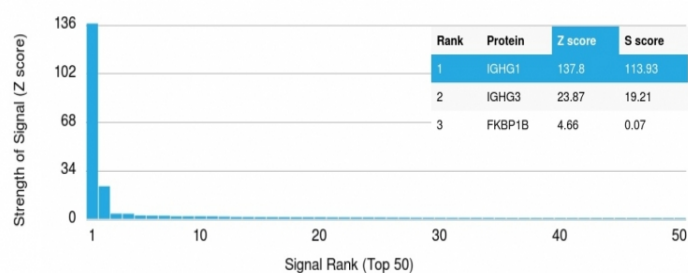
<b>Clone</b>	IG266
<b>Gene Name</b>	IGHG1
<b>Immunogen</b>	Purified human Ig Gamma Chain
<b>Host</b>	Mouse
<b>Clonality</b>	Monoclonal
<b>Isotype / Light Chain</b>	IgG2a / Kappa
<b>Mol. Weight of Antigen</b>	75kDa
<b>Cellular Localization</b>	Cell membrane, Cytoplasm, Secreted
<b>Species Reactivity</b>	Human
<b>Positive Control</b>	293T, Human Serum

\*Optimal dilution for a specific application should be determined.

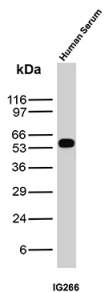
### Product Images for IgG (Immunoglobulin Gamma Heavy Chain) (B-Cell Marker) Antibody



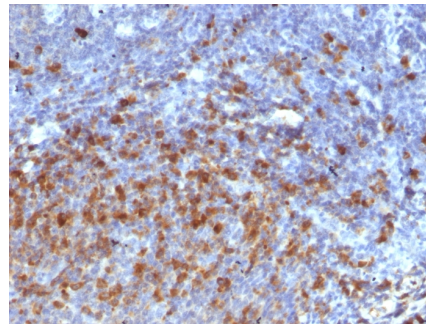
SDS-PAGE Analysis Purified Anti-IgG Mouse Monoclonal Antibody (IG266)  
Confirmation of Integrity and Purity of Antibody.



Analysis of Protein Array containing more than 19,000 full-length human proteins using Anti-IgG Mouse Monoclonal Antibody (IG266). Z- and S- Score: The Z-score represents the strength of a signal that a monoclonal antibody (Monoclonal Antibody) (in combination with a fluorescently-tagged anti-IgG secondary antibody) produces when binding to a particular protein on the HuProt™ array. Z-scores are described in units of standard deviations (SD's) above the mean value of all signals generated on that array. If targets on HuProt™ are arranged in descending order of the Z-score, the S-score is the difference (also in units of SD's) between the Z-score. S-score therefore represents the relative target specificity of a Monoclonal Antibody to its intended target. A Monoclonal Antibody is considered to be specific to its intended target, if the Monoclonal Antibody has an S-score of at least 2.5. For example, if a Monoclonal Antibody binds to protein X with a Z-score of 43 and to protein Y with a Z-score of 14, then the S-score for the binding of that Monoclonal Antibody to protein X is equal to 29.



Western Blot Analysis of Human Serum lysate using IgG Mouse Monoclonal Antibody (IG266)



Formalin-fixed, paraffin-embedded human tonsil stained with IgG Mouse Monoclonal Antibody (IG266). HIER: Tris/EDTA, pH9.0, 45min. 2°: HRP-polymer, 30min. DAB, 5min.

### Specificity & Comments

Recognizes a protein of 75kDa, identified as gamma heavy chain of human immunoglobulins. It does not cross-react with alpha (IgA), mu (IgM), epsilon (IgE), or delta (IgD), heavy chains, T-cells, monocytes, granulocytes, or erythrocytes. This MAb is useful in the identification of leukemias, plasmacytomas, and certain non-Hodgkin s lymphomas. The most common feature of these malignancies is the restricted expression of a single heavy chain class. Demonstration of clonality in lymphoid infiltrates indicates that the infiltrate is clonal and therefore malignant.

### Supplied As

200ug/ml of Ab purified from Bioreactor Concentrate by Protein A/G. Prepared in 10mM PBS with 0.05% BSA & 0.05% azide. Also available WITHOUT BSA & azide at 1.0mg/ml.

### Storage and Stability

Antibody with azide - store at 2 to 8 °C. Antibody without azide - store at -20 to -80 °C. Antibody is stable for 24 months. Non-hazardous. No MSDS required.

### Limitations and Warranty

This antibody is available for research use only and is not approved for use in diagnosis. There are no warranties, expressed or implied, which extend beyond this description. Company is not liable for any personal injury or economic loss resulting from this product.