

## IgG (Immunoglobulin Gamma Heavy Chain) (B-Cell Marker) Antibody

Mouse Monoclonal Antibody [Clone IG217]

Catalog No	Format	Size
3500-MSM1-P0	Purified Ab with BSA and Azide at 200ug/ml	20 ug
3500-MSM1-P1	Purified Ab with BSA and Azide at 200ug/ml	100 ug
3500-MSM1-P1ABX	Purified Ab WITHOUT BSA and Azide at 1.0mg/ml	100 ug

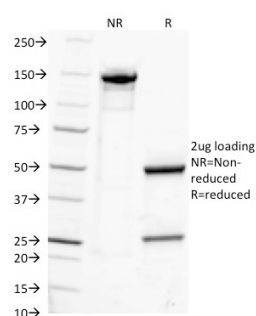
Applications	Tested Dillution	Note
Flow Cytometry (Flow)	1-2ug/million cells	
Immunofluorescence (IF)	1-3ug/ml	
Immunohistochemistry (IHC)	1-2ug/ml	30 min at RT. Staining of formalin-fixed tissues requires heating tissue sections in 10mM Tris with 1mM EDTA, pH 9.0, for 45 min at 95°C followed by cooling at RT for 20 minutes
Western Blot (WB)	2-4ug/ml	

### Product Details

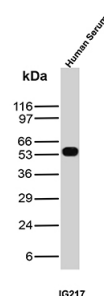
Clone	IG217
Gene Name	IGHG1
Immunogen	Purified human Ig Gamma Chain
Host	Mouse
Clonality	Monoclonal
Isotype / Light Chain	IgG1 / Kappa
Mol. Weight of Antigen	75kDa
Cellular Localization	Cell membrane, Secreted
Species Reactivity	Human
Positive Control	293T, Raji or hPBL cells. Tonsil or Spleen. Human Serum.

*\*Optimal dilution for a specific application should be determined.*

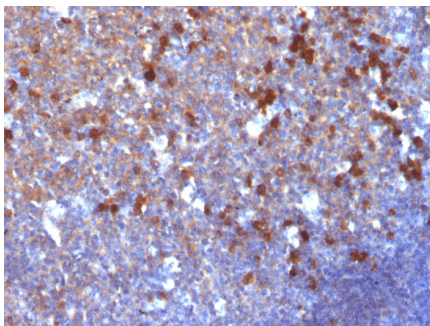
### Product Images for IgG (Immunoglobulin Gamma Heavy Chain) (B-Cell Marker) Antibody



SDS-PAGE Analysis of Purified IgG Monoclonal Antibody (IG217). Confirmation of Integrity and Purity of Antibody



Western Blot Analysis of Human Serum lysate using IgG Mouse Monoclonal Antibody (IG217)



Formalin-fixed, paraffin-embedded human Tonsil stained with IgG Monoclonal Antibody (IG217)

### Specificity & Comments

Recognizes a protein of 75kDa, identified as gamma heavy chain of human immunoglobulins. It reacts with all sub-classes of gamma chain of human immunoglobulins. It does not cross-react with alpha (IgA), mu (IgM), epsilon (IgE), or delta (IgD), heavy chains, T-cells, monocytes, granulocytes, or erythrocytes. This MAb is useful in the identification of leukemias, plasmacytomas, and certain non-Hodgkin's lymphomas. The most common feature of these malignancies is the restricted expression of a single heavy chain class. Demonstration of clonality in lymphoid infiltrates indicates that the infiltrate is clonal and therefore malignant.

### Supplied As

200ug/ml of Ab Purified from Bioreactor Concentrate by Protein A/G. Prepared in 10mM PBS with 0.05% BSA & 0.05% azide. Also available WITHOUT BSA & azide at 1.0mg/ml.

### Storage and Stability

Antibody with azide - store at 2 to 8°C. Antibody without azide - store at -20 to -80°C. Antibody is stable for 24 months. Non-hazardous. No MSDS required.

### Limitations and Warranty

This antibody is available for research use only and is not approved for use in diagnosis. There are no warranties, expressed or implied, which extend beyond this description. Company is not liable for any personal injury or economic loss resulting from this product.