



## Recombinant Insulin-like Growth Factor-1 (IGF-1) Antibody

Rabbit Monoclonal Antibody [Clone IGF1/2872R]

Catalog No	Format	Size
3479-RBM3-P0	Purified Ab with BSA and Azide at 200ug/ml	20 ug
3479-RBM3-P1	Purified Ab with BSA and Azide at 200ug/ml	100 ug
3479-RBM3-P1ABX	Purified Ab WITHOUT BSA and Azide at 1.0mg/ml	100 ug

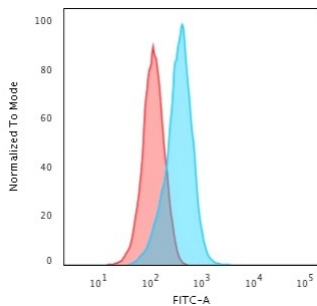
Applications	Tested Dillution	Note
Flow Cytometry (Flow)	1-2ug/million cells	
Immunofluorescence (IF)	1-3ug/ml	

### Product Details

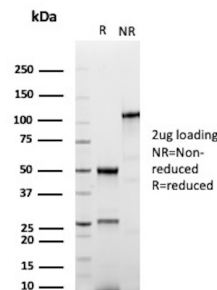
<b>Clone</b>	IGF1/2872R
<b>Gene Name</b>	IGF1
<b>Immunogen</b>	Recombinant full-length human IGF-1 protein
<b>Host</b>	Rabbit
<b>Clonality</b>	Monoclonal
<b>Isotype / Light Chain</b>	IgG / Kappa
<b>Mol. Weight of Antigen</b>	~7.6kDa
<b>Cellular Localization</b>	Secreted
<b>Species Reactivity</b>	Human, Mouse, Rabbit, Rat
<b>Positive Control</b>	Breast, Thyroid or Colon Cancers (IHC). K562 cells (FACS). IGF-1 recombinant protein (WB).

\*Optimal dilution for a specific application should be determined.

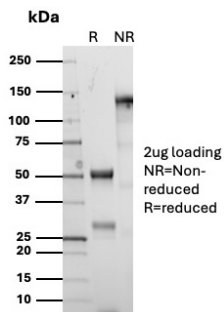
### Product Images for Recombinant Insulin-like Growth Factor-1 (IGF-1) Antibody



Flow Cytometric Analysis of human K562 cells using IGF-1 Rabbit Recombinant Monoclonal Antibody (IGF1/2872R) followed by Goat anti-Rabbit IgG-CF488 (Blue); Isotype control (Red).



SDS-PAGE Analysis of Purified Insulin-like growth factor I Recombinant Rabbit Monoclonal Antibody (IGF1/2872R). Confirmation of Purity and Integrity of Antibody.



SDS-PAGE Analysis of Purified Insulin-like growth factor I Recombinant Rabbit Monoclonal Antibody (IGF1/2872R). Confirmation of Purity and Integrity of Antibody.

### Specificity & Comments

This antibody is specific to Insulin-like Growth Factor (IGF-1) and shows minimal cross-reaction with IGF-11, Proinsulin, MSF, and Insulin. IGF-1 is a polypeptide growth factor with two isoforms that are produced by alternative splicing. Isoform 1 is also known as IGF-1B while isoform 2 is known as IGF-1A. IGF-1 stimulates the proliferation of a wide range of cell types including muscle, bone and cartilage tissue. It functions as an autocrine regulator of growth. Activation of IGF system has emerged as a key factor for tumor progression and resistance to apoptosis in many cancers like those of breast, thyroid and colon.

### Supplied As

200ug/ml of Ab Purified from Bioreactor Concentrate by Protein A/G. Prepared in 10mM PBS with 0.05% BSA & 0.05% azide. Also available WITHOUT BSA & azide at 1.0mg/ml.

### Storage and Stability

Antibody with azide - store at 2 to 8°C. Antibody without azide - store at -20 to -80°C. Antibody is stable for 24 months. Non-hazardous. No MSDS required.

### Research Areas

AKT Signaling, Breast Cancer, Cardiovascular, Mesenchymal Stem Cell Differentiation, Neural Stem Cells, Neuroinflammation, Signal Transduction, Stem Cell Differentiation

### Limitations and Warranty

This antibody is available for research use only and is not approved for use in diagnosis. There are no warranties, expressed or implied, which extend beyond this description. Company is not liable for any personal injury or economic loss resulting from this product.