

## Interferon alpha-2 (IFNA2) Antibody

Mouse Monoclonal Antibody [Clone N27]

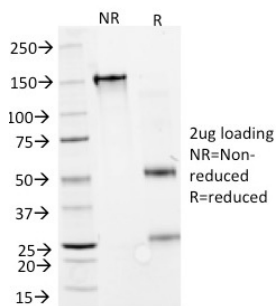
Catalog No	Format	Size
3440-MSM1-P0	Purified Ab with BSA and Azide at 200ug/ml	20 ug
3440-MSM1-P1	Purified Ab with BSA and Azide at 200ug/ml	100 ug
3440-MSM1-P1ABX	Purified Ab WITHOUT BSA and Azide at 1.0mg/ml	100 ug

Applications	Tested Dillution	Note
Flow Cytometry (Flow)	1-2ug/million cells	
Immunofluorescence (IF)	1-3ug/ml	

Product Details	
Clone	N27
Gene Name	IFNA2
Immunogen	Purified recombinant human IFN-alpha2
Host	Mouse
Clonality	Monoclonal
Isotype / Light Chain	IgG1 / Kappa
Mol. Weight of Antigen	16-27kDa
Cellular Localization	Secreted
Species Reactivity	Human
Positive Control	Stimulated human peripheral blood mononuclear cells.

\*Optimal dilution for a specific application should be determined.

### Product Images for Interferon alpha-2 (IFNA2) Antibody



SDS-PAGE Analysis of Purified IFNA2 Mouse Monoclonal Antibody (N27).  
Confirmation of Purity and Integrity of Antibody.

### Specificity & Comments

Recognizes a protein of 16-27kDa, identified as human interferon-II (IFN-II). Its epitope maps between aa112-148 of IFN-II (total aa172). This MAb is specific for IFN-(II) and does not cross-react with IFN-(I). The site recognized by this MAb is called site I and is responsible for the antiviral and anti-proliferative activities of IFN-(II). Epitopes of N27 and N39 MAbs are different and represent a good combination of antibodies to set up an ELISA assay for the quantitation of IFN-(II) after viral infections. The IFN- family consists of 24 or more genes or pseudo-genes. IFN-II) is one of the two distinct families (I and II) of human IFN-. The -interferon are mainly produced by lymphocytes, monocytes, macrophages, and cell lines such as Namalwa and KG1 following induction by viruses, nucleic acids, and glucocorticoid hormones. They are involved in virus resistance on target cells, inhibition of cell proliferation, induction of cytokines and regulation of expression of MHC class I antigens.

### Supplied As

200ug/ml of Ab Purified from Bioreactor Concentrate by Protein A/G. Prepared in 10mM PBS with 0.05% BSA & 0.05% azide. Also available WITHOUT BSA & azide at 1.0mg/ml.

### Storage and Stability

Antibody with azide - store at 2 to 8°C. Antibody without azide - store at -20 to -80°C. Antibody is stable for 24 months. Non-hazardous. No MSDS required.

### Research Areas

Cardiovascular, Cytokine Signaling, Hematopoietic Stem Cells, Immunology, Infectious Disease

## Limitations and Warranty

This antibody is available for research use only and is not approved for use in diagnosis. There are no warranties, expressed or implied, which extend beyond this description. Company is not liable for any personal injury or economic loss resulting from this product.

---