

## CD50 / ICAM3 Antibody

Mouse Monoclonal Antibody [Clone 101-1D2]

Catalog No	Format	Size
3385-MSM3-P0	Purified Ab with BSA and Azide at 200ug/ml	20 ug
3385-MSM3-P1	Purified Ab with BSA and Azide at 200ug/ml	100 ug
3385-MSM3-P1ABX	Purified Ab WITHOUT BSA and Azide at 1.0mg/ml	100 ug

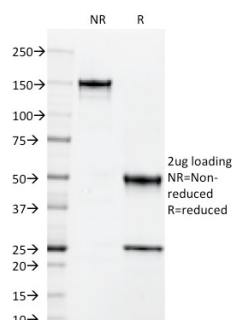
Applications	Tested Dillution	Note
Flow Cytometry (Flow)	1-2ug/million cells	
Immunofluorescence (IF)	1-3ug/ml	
Immunohistochemistry (IHC)	1-2ug/ml	30 min at RT. Staining of formalin-fixed tissues requires heating tissue sections in 10mM Tris with 1mM EDTA, pH 9.0, for 45 min at 95°C followed by cooling at RT for 20 minutes

### Product Details

<b>Clone</b>	101-1D2
<b>Gene Name</b>	ICAM3
<b>Immunogen</b>	Stimulated human leukocytes
<b>Host</b>	Mouse
<b>Clonality</b>	Monoclonal
<b>Isotype / Light Chain</b>	IgG2a / Kappa
<b>Mol. Weight of Antigen</b>	110-160kDa
<b>Cellular Localization</b>	Membrane
<b>Species Reactivity</b>	Human
<b>Positive Control</b>	HL-60 or THP-1 cells. Lymph node and tonsil.

\*Optimal dilution for a specific application should be determined.

### Product Images for CD50 / ICAM3 Antibody



SDS-PAGE Analysis of Purified CD50 Mouse Monoclonal Antibody (101-1D2).  
Confirmation of Purity and Integrity of Antibody.

### Specificity & Comments

Recognizes an N-glycosylated glycoprotein of 120kDa with intra-chain disulfide bonds, identified as CD50 or ICAM-3 (WS: IV V). Its epitope localizes in the D2 extracellular domain and is resistant to neuraminidase and proteases. CD50 is the major ligand for LFA-1 (CD11a/CD18) and may have signalling role to increase adhesion. It is expressed on thymocytes and T lymphocytes and is resistant to treatment with phosphatidylinositol (PI) phospholipase C. This MAb inhibits primary mixed lymphocyte culture (MLC) but not secondary MLC, cytotoxicity or proliferation induced by mitogens. It blocks binding of NK1-L16 stimulated T cells to L cells expressing CD50. This MAb is excellent for staining of formalin/paraffin tissues.

### Supplied As

200ug/ml of Ab Purified from Bioreactor Concentrate by Protein A/G. Prepared in 10mM PBS with 0.05% BSA & 0.05% azide. Also available WITHOUT BSA & azide at 1.0mg/ml.

### Storage and Stability

Antibody with azide - store at 2 to 8°C. Antibody without azide - store at -20 to -80°C. Antibody is stable for 24 months. Non-hazardous. No MSDS required.

### Research Areas

Cardiovascular, Immunology, Mitochondria Marker

## Limitations and Warranty

This antibody is available for research use only and is not approved for use in diagnosis. There are no warranties, expressed or implied, which extend beyond this description. Company is not liable for any personal injury or economic loss resulting from this product.

---