

Recombinant HSP60 (Heat Shock Protein 60) (Mitochondrial Marker) Antibody

Rabbit Monoclonal Antibody [Clone HSPD1/2206R]

Catalog No	Format	Size
3329-RBM6-P0	Purified Ab with BSA and Azide at 200ug/ml	20 ug
3329-RBM6-P1	Purified Ab with BSA and Azide at 200ug/ml	100 ug
3329-RBM6-P1ABX	Purified Ab WITHOUT BSA or Azide at 1.0mg/ml	100 ug

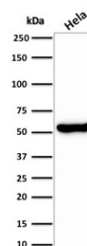
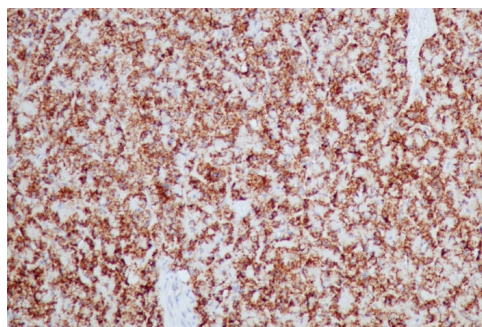
Applications	Tested Dillution	Note
Immunohistochemistry (IHC)	1-2ug/ml	30 min at RT. Staining of formalin-fixed tissues requires heating tissue sections in 10mM Tris with 1mM EDTA, pH 9.0, for 45 min at 95°C followed by cooling at RT for 20 minutes
Western Blot (WB)	2-4ug/ml	

Product Details

Clone	HSPD1/2206R
Gene Name	HSPD1
Immunogen	Recombinant human full-length HSP60 protein
Host	Rabbit
Clonality	Monoclonal
Isotype / Light Chain	IgG / Kappa
Mol. Weight of Antigen	60kDa
Cellular Localization	Mitochondrion matrix
Species Reactivity	Chicken, Cow, Dog, Guinea Pig, Hamster, Human, Monkey, Mouse, Pig, Rabbit, Rat, Sheep
Positive Control	HeLa or HepG2 cells. Synovial biopsies from patients with juvenile chronic arthritis. Synovial lining layer is strongly positive for hsp60. Breast carcinoma, Human Brain, Human Kidney, Human Pancreas, K-562

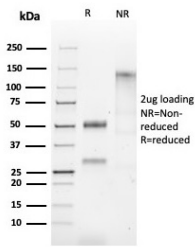
*Optimal dilution for a specific application should be determined.

Product Images for Recombinant HSP60 (Heat Shock Protein 60) (Mitochondrial Marker) Antibody

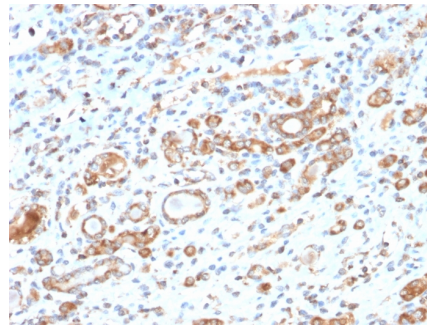


Formalin-fixed, paraffin-embedded dog pancreas stained with HSP60 Rabbit Recombinant Monoclonal Antibody (HSPD1/2206R).

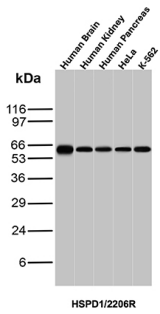
Western blot analysis of HeLa cell lysate using HSP60 Rabbit Recombinant Monoclonal Antibody (HSPD1/2206R).



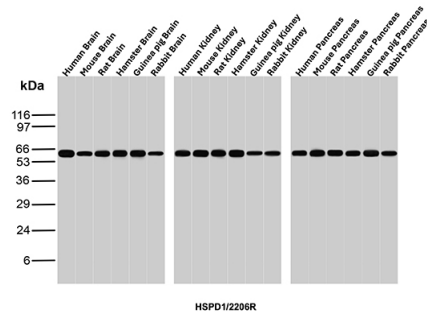
SDS-PAGE Analysis Purified HSP60 Rabbit Recombinant Monoclonal Antibody (HSPD1/2206R). Confirmation of Purity and Integrity of Antibody.



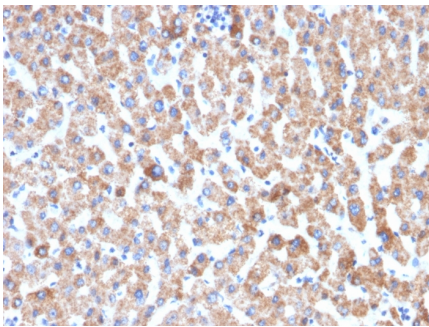
Formalin-fixed, paraffin-embedded human liver stained with HSP60 Rabbit Recombinant Monoclonal Antibody (HSPD1/2206R).



Western blot analysis of Human Brain, Human Kidney, Human Pancreas, HeLa, and K-562 lysates using HSP60 Recombinant Rabbit Monoclonal Antibody (HSPD1/2206R).



Western blot analysis of Human Brain, Mouse Brain, Rat Brain, Hamster Brain, Guinea pig Brain, Rabbit Brain, Human Kidney, Mouse Kidney, Rat Kidney, Hamster Kidney, Guinea pig Kidney, Rabbit Kidney, Human Pancreas, Mouse Pancreas, Rat Pancreas, Hamster Pancreas, Guinea pig Pancreas, and Rabbit Pancreas tissue lysates using HSP60 Recombinant Rabbit Monoclonal Antibody (HSPD1/2206R).



Formalin-fixed, paraffin-embedded human liver stained with HSP60 Rabbit Recombinant Monoclonal Antibody (HSPD1/2206R).

Specificity & Comments

Recognizes a 60kDa protein, identified as the heat shock protein 60 (hsp60). Its epitope is localized between aa 383-447 of human hsp60. A wide variety of environmental and pathophysiological stressful conditions trigger the synthesis of a family of proteins known as heat shock proteins (hsp s), more appropriately called as stress response proteins (srp s). hsp60 is a potential antigen in a number of autoimmune diseases. In human arthritis and in experimentally induced arthritis in animals, disease development coincides with the development of immune reactivity directed against not only bacterial hsp60, but also against its mammalian homolog. Clone HSPD1/2206R, unlike LK2, recognizes only the mammalian (not bacterial) hsp60 and is useful in distinguishing hsp60 from mammals and bacteria.

Supplied As

200ug/ml of Ab purified from Bioreactor Concentrate by Protein A/G. Prepared in 10mM PBS with 0.05% BSA & 0.05% azide. Also available WITHOUT BSA at 1.0mg/ml.

Storage and Stability

Antibody with azide - store at 2 to 8 °C. Antibody is stable for 24 months. Non-hazardous. No MSDS required.

Research Areas

Cardiovascular, Mitochondria Marker, Ovarian Cancer, Transcription Factors

Limitations and Warranty

This antibody is available for research use only and is not approved for use in diagnosis. There are no warranties, expressed or implied, which extend beyond this description. Company is not liable for any personal injury or economic loss resulting from this product.
