

## Recombinant HSP60 (Heat Shock Protein 60) (Mitochondrial Marker) Antibody

Mouse Monoclonal Antibody [Clone rGROEL/780]

Catalog No	Format	Size
3329-MSM7-P0	Purified Ab with BSA and Azide at 200ug/ml	20 ug
3329-MSM7-P1	Purified Ab with BSA and Azide at 200ug/ml	100 ug
3329-MSM7-P1ABX	Purified Ab WITHOUT BSA at 1.0mg/ml	100 ug

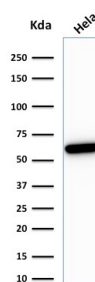
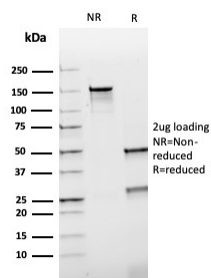
Applications	Tested Dillution	Note
Immunohistochemistry (IHC)	1-2ug/ml	30 min at RT. Staining of formalin-fixed tissues requires heating tissue sections in 10mM Tris with 1mM EDTA, pH 9.0, for 45 min at 95°C followed by cooling at RT for 20 minutes
Western Blot (WB)	2-4ug/ml	

### Product Details

<b>Clone</b>	rGROEL/780
<b>Gene Name</b>	HSPD1
<b>Immunogen</b>	Recombinant full-length human HSP60 protein
<b>Host</b>	Mouse
<b>Clonality</b>	Monoclonal
<b>Isotype / Light Chain</b>	IgG1 / Kappa
<b>Mol. Weight of Antigen</b>	60kDa
<b>Cellular Localization</b>	Mitochondrion matrix
<b>Species Reactivity</b>	Human
<b>Positive Control</b>	HeLa or HepG2 cells. Synovial biopsies from patients with juvenile chronic arthritis. Synovial lining layer is strongly positive for hsp60. Breast carcinoma. Brain, Kidney, Liver, Jurkat.

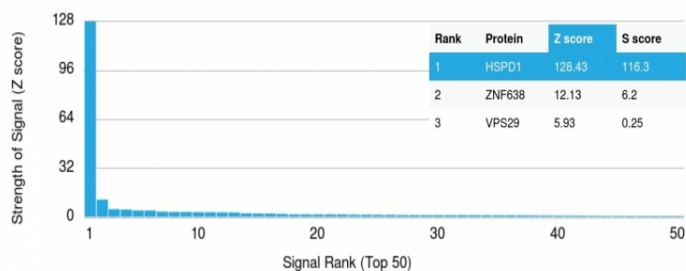
*\*Optimal dilution for a specific application should be determined.*

### Product Images for Recombinant HSP60 (Heat Shock Protein 60) (Mitochondrial Marker) Antibody

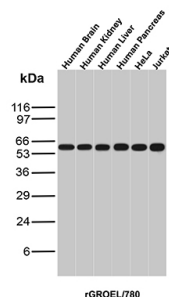


SDS-PAGE Analysis of Purified HSP60 Mouse Recombinant Monoclonal Antibody (rGROEL/780). Confirmation of Purity and Integrity of Antibody.

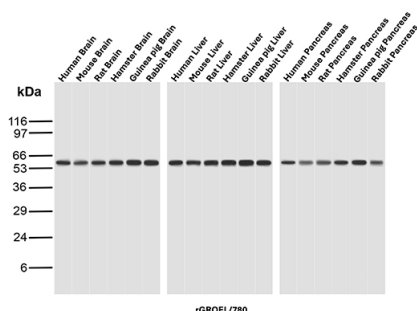
Western Blot Analysis of HeLa cell lysate using HSP60 Mouse Recombinant Monoclonal Antibody (rGROEL/780).



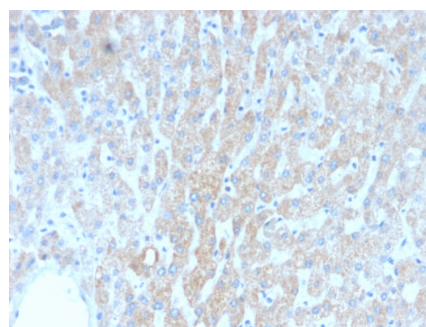
Analysis of Protein Array containing more than 19,000 full-length human proteins using HSP60 Mouse Monoclonal Antibody (rGROEL/780). Z- and S- Score: The Z-score represents the strength of a signal that a monoclonal antibody (MAb) (in combination with a fluorescently-tagged anti-IgG secondary antibody) produces when binding to a particular protein on the HuProt™ array. Z-scores are described in units of standard deviations (SD's) above the mean value of all signals generated on that array. If targets on HuProt™ are arranged in descending order of the Z-score, the S-score is the difference (also in units of SD's) between the Z-score. S-score therefore represents the relative target specificity of a MAb to its intended target. A MAb is considered to specific to its intended target, if the MAb has an S-score of at least 2.5. For example, if a MAb binds to protein X with a Z-score of 43 and to protein Y with a Z-score of 14, then the S-score for the binding of that MAb to protein X is equal to 29.



Western blot analysis of Human Brain, Human Kidney, Human Liver, Human Pancreas, HeLa and Jurkat lysates using HSP60 Recombinant Mouse Monoclonal Antibody (rGROEL/780).



Western blot analysis of Brain, Liver and Pancreas tissue lysates of different species using HSP60 Recombinant Mouse Monoclonal Antibody (rGROEL/780).



Formalin-fixed, paraffin-embedded human Liver stained with HSP60 Mouse Recombinant Monoclonal Antibody (rGROEL/780).

## Specificity & Comments

Recognizes a 60kDa protein, identified as the heat shock protein 60 (hsp60). Its epitope is localized between aa 383-447 of human hsp60. A wide variety of environmental and pathophysiological stressful conditions trigger the synthesis of a family of proteins known as heat shock proteins (hsp's), more appropriately called as stress response proteins (srp's). hsp60 is a potential antigen in a number of autoimmune diseases. In human arthritis and in experimentally induced arthritis in animals, disease development coincides with the development of immune reactivity directed against not only bacterial hsp60, but also against its mammalian homolog. Clone rGROEL/780, unlike LK2, recognizes only the mammalian (not bacterial) hsp60 and is useful in distinguishing hsp60 from mammals and bacteria.

## Limitations and Warranty

This antibody is available for research use only and is not approved for use in diagnosis. There are no warranties, expressed or implied, which extend beyond this description. Company is not liable for any personal injury or economic loss resulting from this product.

## Supplied As

200ug/ml of Ab Purified from Bioreactor Concentrate by Protein A/G. Prepared in 10mM PBS with 0.05% BSA & 0.05% azide. Also available WITHOUT BSA at 1.0mg/ml.

## Storage and Stability

Antibody with azide - store at 2 to 8°C. Antibody is stable for 24 months. Non-hazardous. No MSDS required.

## Research Areas

Cardiovascular, Hypoxia, Mitochondria Marker, Ovarian Cancer, Transcription Factors