

Recombinant HSP60 (Heat Shock Protein 60) (Mitochondrial Marker) Antibody

Mouse Monoclonal Antibody [Clone rHSPD1/6497]

Catalog No	Format	Size
3329-MSM14-P0	Purified Ab with BSA and Azide at 200ug/ml	20 ug
3329-MSM14-P1	Purified Ab with BSA and Azide at 200ug/ml	100 ug
3329-MSM14-P1ABX	Purified Ab WITHOUT BSA or Azide at 1.0mg/ml	100 ug

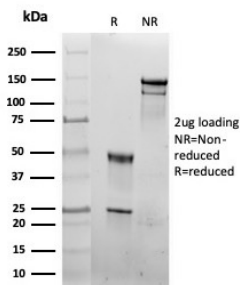
Applications	Tested Dillution	Note
Immunohistochemistry (IHC)	1-2ug/ml	30 min at RT. Staining of formalin-fixed tissues requires heating tissue sections in 10mM Tris with 1mM EDTA, pH 9.0, for 45 min at 95°C followed by cooling at RT for 20 minutes
Western Blot (WB)	2-4ug/ml	

Product Details

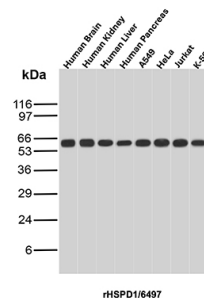
Clone	rHSPD1/6497
Gene Name	HSPD1
Immunogen	Recombinant human full-length HSP60 protein
Host	Mouse
Clonality	Monoclonal
Isotype / Light Chain	IgG1 / Kappa
Mol. Weight of Antigen	60kDa
Cellular Localization	Mitochondrion matrix
Species Reactivity	Chicken, Cow, Dog, Hamster, Human, Monkey, Mouse, Pig, Rabbit, Rat, Sheep
Positive Control	HeLa or Hep2 cells. Synovial biopsies from patients with juvenile chronic arthritis. Synovial lining layer is strongly positive for hsp60. Breast carcinoma. Brain, Kidney, Liver, Pancreas, A549, HeLa, Jurkat, K-562.

*Optimal dilution for a specific application should be determined.

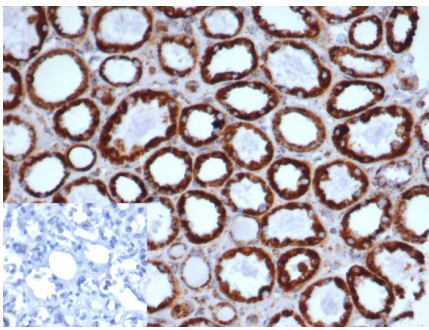
Product Images for Recombinant HSP60 (Heat Shock Protein 60) (Mitochondrial Marker) Antibody



SDS-PAGE Analysis of Purified HSP60 Recombinant Mouse Monoclonal Antibody (rHSPD1/6497). Confirmation of Purity and Integrity of Antibody.



Western blot analysis of Human Brain, Human Kidney, Human Liver, Human Pancreas, A549, HeLa, Jurkat and K-562 lysates using HSP60 Recombinant Mouse Monoclonal Antibody (rHSPD1/6497).



Formalin-fixed, paraffin-embedded human kidney stained with HSP60 Recombinant Mouse Monoclonal Antibody (rHSPD1/6497). Inset: 2°C Ab only control. Hematoxylin counterstain.

Specificity & Comments

Recognizes a 60kDa protein, identified as the heat shock protein 60 (hsp60). Its epitope is localized between aa 383-447 of human hsp60. A wide variety of environmental and pathophysiological stressful conditions trigger the synthesis of a family of proteins known as heat shock proteins (hsp s), more appropriately called as stress response proteins (srp s). hsp60 is a potential antigen in a number of autoimmune diseases. In human arthritis and in experimentally induced arthritis in animals, disease development coincides with the development of immune reactivity directed against not only bacterial hsp60, but also against its mammalian homolog. Clone rHSPD1/6497, unlike LK2, recognizes only the mammalian (not bacterial) hsp60 and is useful in distinguishing hsp60 from mammals and bacteria.

Limitations and Warranty

This antibody is available for research use only and is not approved for use in diagnosis. There are no warranties, expressed or implied, which extend beyond this description. Company is not liable for any personal injury or economic loss resulting from this product.

Supplied As

200ug/ml of Ab purified from Bioreactor Concentrate by Protein A/G. Prepared in 10mM PBS with 0.05% BSA & 0.05% azide. Also available WITHOUT BSA at 1.0mg/ml.

Storage and Stability

Antibody with azide - store at 2 to 8 °C. Antibody is stable for 24 months. Non-hazardous. No MSDS required.

Research Areas

Cardiovascular, Mitochondria Marker, Ovarian Cancer, Transcription Factors
