

Recombinant Heat Shock 27kDa Protein 1 Antibody

Rabbit Monoclonal Antibody [Clone HSPB1/7038R]

Catalog No	Format	Size
3315-RBM7-P0	Purified Ab with BSA and Azide at 200ug/ml	20 ug
3315-RBM7-P1	Purified Ab with BSA and Azide at 200ug/ml	100 ug
3315-RBM7-P1ABX	Purified Ab WITHOUT BSA and Azide at 1.0mg/ml	100 ug

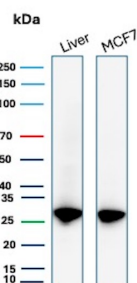
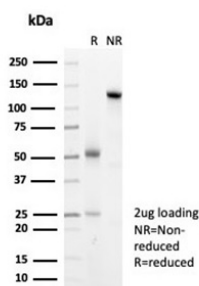
Applications	Tested Dillution	Note
Immunohistochemistry (IHC)	1-2ug/ml	30 min at RT. Staining of formalin-fixed tissues requires heating tissue sections in 10mM Tris with 1mM EDTA, pH 9.0, for 45 min at 95°C followed by cooling at RT for 20 minutes
Western Blot (WB)	2-4ug/ml	

Product Details

Clone	HSPB1/7038R
Gene Name	HSPB1
Immunogen	Recombinant human full-length HSP27 protein
Host	Rabbit
Clonality	Monoclonal
Isotype / Light Chain	IgG / Kappa
Mol. Weight of Antigen	27kDa
Cellular Localization	Cytoplasm, Cytoskeleton, Nucleus, Spindle
Species Reactivity	Human
Positive Control	MCF-7, Human Liver. Human Heart, Skeletal Muscle, Skin, A549, HeLa.

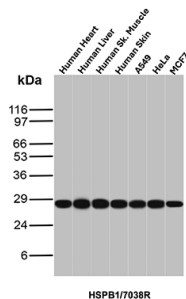
*Optimal dilution for a specific application should be determined.

Product Images for Recombinant Heat Shock 27kDa Protein 1 Antibody

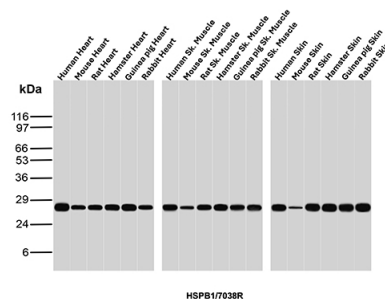


SDS-PAGE Analysis of Purified HSP27 Recombinant Rabbit Monoclonal Antibody (HSPB1/7038R). Confirmation of Purity and Integrity of Antibody.

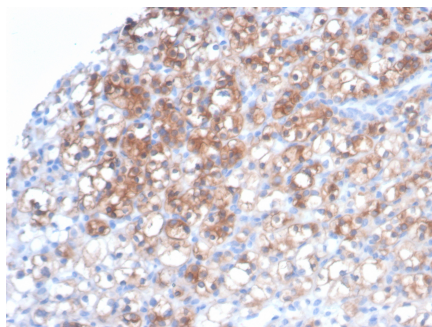
Western blot analysis of human liver and MCF7 lysates using HSP27 Recombinant Rabbit Monoclonal Antibody (HSPB1/7038R).



Western blot analysis of Human Heart, Human Liver, Human Skeletal muscle, Human Skin, A549, HeLa and MCF7 lysates using HSP27 Recombinant Rabbit Monoclonal Antibody (HSPB1/7038R).



Western blot analysis of Heart, Skeletal muscle and Skin tissue lysates of different species using HSP27 Recombinant Rabbit Monoclonal Antibody (HSPB1/7038R).



Formalin-fixed, paraffin-embedded human renal cell carcinoma (RCC) stained with HSP27 Recombinant Rabbit Monoclonal Antibody (HSPB1/7038R). HIER: Tris/EDTA, pH9.0, 45min. 2°: HRP-polymer, 30min. DAB, 5min.

Specificity & Comments

HSP27, also referred to as the Estrogen-Regulated 24K protein and HSP28, is one of several small heat shock proteins produced by all organisms studied. HSP27 synthesis is induced by elevated temperature, as well as by estrogen in hormone responsive cells. Interestingly, human HSP27 also shares greater than 50% homology with low molecular weight *Drosophila* HSPs and mammalian γ -crystalline lens protein. Because of the estrogen responsive nature of HSP27, this protein has been studied extensively in human estrogen responsive tissues such as cervix, endometrium and breast tissue. Therefore, HSP27 may be useful in classifying various hormone sensitive tumors.

Supplied As

200ug/ml of Ab purified from Bioreactor Concentrate by Protein A/G. Prepared in 10mM PBS with 0.05% BSA & 0.05% azide. Also available WITHOUT BSA & azide at 1.0mg/ml.

Storage and Stability

Antibody with azide - store at 2 to 8 °C. Antibody without azide - store at -20 to -80 °C. Antibody is stable for 24 months. Non-hazardous. No MSDS required.

Research Areas

BBB VCAM-1 Signaling, MAPK Signaling, Ovarian Cancer, Signal Transduction

Limitations and Warranty

This antibody is available for research use only and is not approved for use in diagnosis. There are no warranties, expressed or implied, which extend beyond this description. Company is not liable for any personal injury or economic loss resulting from this product.