

HLA-DRB (MHC II) Antibody

Mouse Monoclonal Antibody [Clone Bra30]

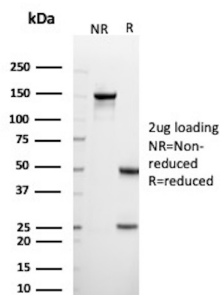
Catalog No	Format	Size
3123-MSM4-P0	Purified Ab with BSA and Azide at 200ug/ml	20 ug
3123-MSM4-P1	Purified Ab with BSA and Azide at 200ug/ml	100 ug
3123-MSM4-P1ABX	Purified Ab WITHOUT BSA and Azide at 1.0mg/ml	100 ug

Applications	Tested Dillution	Note
Flow Cytometry (Flow)	1-2ug/million cells	
Immunofluorescence (IF)	1-3ug/ml	

Product Details	
Clone	Bra30
Gene Name	HLA-DRB1
Immunogen	Human REH cells (non-T, non-B leukemia cell line)
Host	Mouse
Clonality	Monoclonal
Isotype / Light Chain	IgG2a / Kappa
Mol. Weight of Antigen	~28kDa (beta chain)
Cellular Localization	Autolysosome membrane, Cell membrane, Endoplasmic reticulum membrane, Late endosome membrane, Lysosome membrane
Species Reactivity	Baboon, Chimpanzee, Dog, Human, Monkey, Squirrel
Positive Control	Daudi or HuT78 cells. Tonsil or lymph node., Ramos

*Optimal dilution for a specific application should be determined.

Product Images for HLA-DRB (MHC II) Antibody



SDS-PAGE Analysis of Purified HLA-DRB Mouse Monoclonal Antibody (BRA30). Confirmation of Purity and Integrity of Antibody.

Specificity & Comments

This MAb reacts with the HLA-DRB3 antigen, a member of MHC class II molecules. It does not cross react with HLA-DP and HLA-DQ. HLA-DR is a heterodimeric cell surface glycoprotein comprised of a 36kDa alpha (heavy) chain and a 28kDa beta (light) chain. It is expressed on B-cells, activated T-cells, monocytes/macrophages, dendritic cells and other non-professional APCs. In conjunction with the CD3/TCR complex and CD4 molecules, HLA-DR is critical for efficient peptide presentation to CD4+ T cells. HLA-DR antigens also occur on a variety of epithelial cells and their corresponding neoplastic counterparts.

Supplied As

200ug/ml of Ab Purified from Bioreactor Concentrate by Protein A/G. Prepared in 10mM PBS with 0.05% BSA & 0.05% azide. Also available WITHOUT BSA & azide at 1.0mg/ml.

Storage and Stability

Antibody with azide - store at 2 to 8°C. Antibody without azide - store at -20 to -80°C. Antibody is stable for 24 months. Non-hazardous. No MSDS required.

Research Areas

Cardiovascular, Cytokine Signaling, Dendritic Cell Marker, Immunology

Limitations and Warranty

This antibody is available for research use only and is not approved for use in diagnosis. There are no warranties, expressed or implied, which extend beyond this description. Company is not liable for any personal injury or economic loss resulting from this product.
