

HLA-DRA (MHC II) Antibody

Mouse Monoclonal Antibody [Clone 19-26.1; same as MB-26.1]

Catalog No	Format	Size
3122-MSM3-P0	Purified Ab with BSA and Azide at 200ug/ml	20 ug
3122-MSM3-P1	Purified Ab with BSA and Azide at 200ug/ml	100 ug
3122-MSM3-P1ABX	Purified Ab WITHOUT BSA and Azide at 1.0mg/ml	100 ug

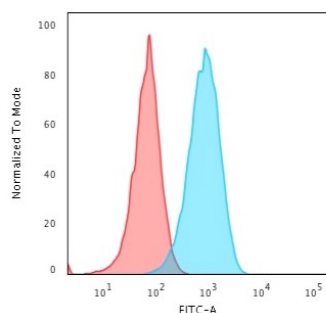
Applications	Tested Dillution	Note
Flow Cytometry (Flow)	1-2ug/million cells	
Immunofluorescence (IF)	1-3ug/ml	
Immunohistochemistry (IHC)	1-2ug/ml	30 min at RT. Staining of formalin-fixed tissues requires heating tissue sections in 10mM Tris with 1mM EDTA, pH 9.0, for 45 min at 95°C followed by cooling at RT for 20 minutes

Product Details

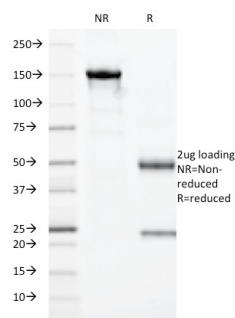
Clone	19-26.1; same as MB-26.1
Gene Name	HLA-DRA
Immunogen	Raji cells
Host	Mouse
Clonality	Monoclonal
Isotype / Light Chain	IgG2a / Kappa
Mol. Weight of Antigen	36kDa (? chain) and 27kDa (? chain)
Cellular Localization	Autolysosome membrane, Cell membrane, Early endosome membrane, Endoplasmic reticulum membrane, Late endosome membrane, Lysosome membrane
Species Reactivity	Human
Positive Control	Daudi or HuT78 cells. Tonsil or lymph node., Raji, Ramos

*Optimal dilution for a specific application should be determined.

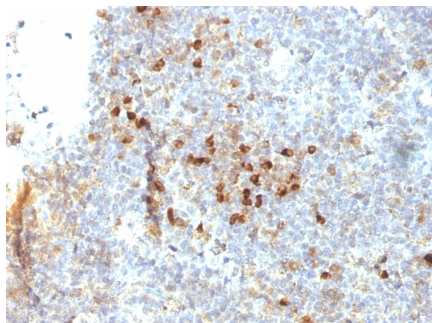
Product Images for HLA-DRA (MHC II) Antibody



Flow Cytometric Analysis of Raji cells. HLA-DRA Monoclonal Antibody (1926.1) followed by goat anti-Mouse IgG-CF488 (Blue); Isotype control (Red).



SDS-PAGE Analysis of Purified HLA-DRA Monoclonal Antibody (19-26.1). Confirmation of Integrity and Purity of Antibody



Formalin-fixed, paraffin-embedded human Tonsil stained with HLA-DRA Mouse Monoclonal Antibody (19-26.1).

Specificity & Comments

This MAb reacts with the HLA-DR antigen, a member of MHC class II molecules. It does not cross react with HLA-DP and HLA-DQ. HLA-DR is a heterodimeric cell surface glycoprotein comprised of a 36kDa alpha (heavy) chain and a 28kDa beta (light) chain. It is expressed on B-cells, activated T-cells, monocytes/macrophages, dendritic cells and other non-professional APCs. In conjunction with the CD3/TCR complex and CD4 molecules, HLA-DR is critical for efficient peptide presentation to CD4+ T cells. It is an excellent histiocytic marker in paraffin sections producing intense cytoplasmic staining. True histiocytic neoplasms are similarly positive. HLA-DR antigens also occur on a variety of epithelial cells and their corresponding neoplastic counterparts.

Limitations and Warranty

This antibody is available for research use only and is not approved for use in diagnosis. There are no warranties, expressed or implied, which extend beyond this description. Company is not liable for any personal injury or economic loss resulting from this product.

Supplied As

200ug/ml of Ab Purified from Bioreactor Concentrate by Protein A/G. Prepared in 10mM PBS with 0.05% BSA & 0.05% azide. Also available WITHOUT BSA & azide at 1.0mg/ml.

Storage and Stability

Antibody with azide - store at 2 to 8°C. Antibody without azide - store at -20 to -80°C. Antibody is stable for 24 months. Non-hazardous. No MSDS required.

Research Areas

B Cell Markers, Cardiovascular, Cytokine Signaling, Dendritic Cell Marker, Hematopoietic Stem Cells, Immunology