

Recombinant HLA-DQ (MHC II) Antibody

Rabbit Monoclonal Antibody [Clone HLA-DQA1/2866R]

Catalog No	Format	Size
3117-RBM2-P0	Purified Ab with BSA and Azide at 200ug/ml	20 ug
3117-RBM2-P1	Purified Ab with BSA and Azide at 200ug/ml	100 ug
3117-RBM2-P1ABX	Purified Ab WITHOUT BSA and Azide at 1.0mg/ml	100 ug

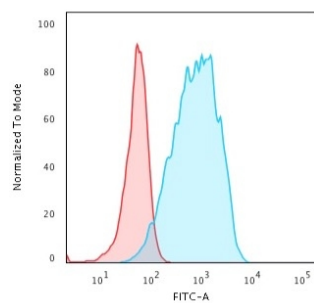
Applications	Tested Dillution	Note
Flow Cytometry (Flow)	1-2ug/million cells	
Immunofluorescence (IF)	1-3ug/ml	
Immunohistochemistry (IHC)	1-2ug/ml	30 min at RT. Staining of formalin-fixed tissues requires heating tissue sections in 10mM Tris with 1mM EDTA, pH 9.0, for 45 min at 95°C followed by cooling at RT for 20 minutes

Product Details

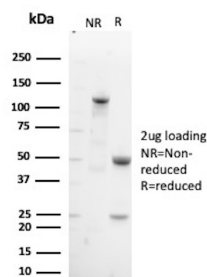
Clone	HLA-DQA1/2866R
Gene Name	HLA-DQA1
Immunogen	Recombinant full-length human HLA-DQ protein
Host	Rabbit
Clonality	Monoclonal
Isotype / Light Chain	IgG / Kappa
Mol. Weight of Antigen	60kDa
Cellular Localization	Cell membrane, Endoplasmic reticulum membrane, Endosome membrane, Golgi apparatus, Lysosome membrane, trans-Golgi network membrane
Species Reactivity	Human, Pig
Positive Control	Raji cells. Tonsil or lymph node.

*Optimal dilution for a specific application should be determined.

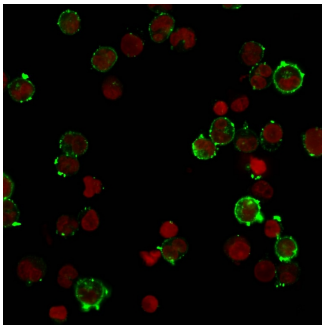
Product Images for Recombinant HLA-DQ (MHC II) Antibody



Flow Cytometric Analysis of Raji cells. HLA-DQ Rabbit Recombinant Monoclonal Antibody (HLA-DQA1/2866R) followed by goat anti-Rabbit IgG-CF488 (Blue); Isotype Control (Red).



SDS-PAGE Analysis of Purified HLA class II histocompatibility antigen, DQ alpha 1 chain Recombinant Rabbit Monoclonal Antibody (HLA-DQA1/2866R). Confirmation of Purity and Integrity of Antibody.



Immunofluorescent staining of Raji cells. HLA-DQ Rabbit Recombinant Monoclonal (HLA-DQA1/2866R) followed by goat anti-rabbit IgG-CF488 (Green). The nuclear counterstain is Reddot (Red).

Specificity & Comments

Recognizes a DQ antigen, which is a dimer of 60kDa. The class II molecule is a heterodimer consisting of an alpha (DQA) and a beta chain (DQB), both anchored in the membrane. It plays a central role in the immune system by presenting peptides derived from extracellular proteins. Class II molecules are expressed in antigen presenting cells (APC: B Lymphocytes, dendritic cells, macrophages). The alpha chain is approximately 33-35kDa. It is encoded by 5 exons; exon 1 encodes the leader peptide, exons 2 and 3 encode the two extracellular domains, and exon 4 encodes the transmembrane domain and the cytoplasmic tail. Within the DQ molecule both the alpha chain and the beta chain contain the polymorphisms specifying the peptide binding specificities, resulting in up to four different molecules. Typing for these polymorphisms is routinely done for bone marrow transplantation. This MAb strongly blocks cytotoxicity activity of T4-positive cytotoxic T cell clones.

Limitations and Warranty

This antibody is available for research use only and is not approved for use in diagnosis. There are no warranties, expressed or implied, which extend beyond this description. Company is not liable for any personal injury or economic loss resulting from this product.

Supplied As

200ug/ml of Ab Purified from Bioreactor Concentrate by Protein A/G. Prepared in 10mM PBS with 0.05% BSA & 0.05% azide. Also available WITHOUT BSA & azide at 1.0mg/ml.

Storage and Stability

Antibody with azide - store at 2 to 8°C. Antibody without azide - store at -20 to -80°C. Antibody is stable for 24 months. Non-hazardous. No MSDS required.

Research Areas

Immunology