

HLA-B (MHC Class I) Antibody

Mouse Monoclonal Antibody [Clone SPM420]

Catalog No	Format	Size
3106-MSM1X-P0	Purified Ab with BSA and Azide at 200ug/ml	20 ug
3106-MSM1X-P1	Purified Ab with BSA and Azide at 200ug/ml	100 ug
3106-MSM1X-P1ABX	Purified Ab WITHOUT BSA and Azide at 1.0mg/ml	100 ug

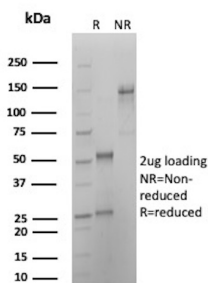
Applications	Tested Dillution	Note
Flow Cytometry (Flow)	1-2ug/million cells	
Immunofluorescence (IF)	1-3ug/ml	

Product Details

Clone	SPM420
Gene Name	HLA-B
Immunogen	Normal human peripheral blood lymphocytes
Host	Mouse
Clonality	Monoclonal
Isotype / Light Chain	IgG3 / Kappa
Mol. Weight of Antigen	45kDa
Cellular Localization	Cell membrane, Endoplasmic reticulum membrane
Species Reactivity	Human
Positive Control	Human peripheral blood lymphocytes, tonsil or lymph node.

*Optimal dilution for a specific application should be determined.

Product Images for HLA-B (MHC Class I) Antibody



SDS-PAGE Analysis of Purified HLA-B Mouse Monoclonal Antibody [SPM420]. Confirmation of Purity and Integrity of Antibody.

Specificity & Comments

HLA-B belongs to the HLA class I heavy chain paralogues. This class I molecule is a heterodimer consisting of a heavy chain and a light chain (beta-2 microglobulin). The heavy chain is anchored in the membrane. Class I molecules play a central role in the immune system by presenting peptides derived from the endoplasmic reticulum lumen. They are expressed in nearly all cells. The heavy chain is approximately 45kDa and its gene contains 8 exons. Exon 1 encodes the leader peptide, exon 2 and 3 encode the alpha1 and alpha2 domains, which both bind the peptide, exon 4 encodes the alpha3 domain, exon 5 encodes the transmembrane region and exons 6 and 7 encode the cytoplasmic tail. Polymorphisms within exon 2 and exon 3 are responsible for the peptide binding specificity of each class one molecule. Typing for these polymorphisms is routinely done for bone marrow and kidney transplantation. Hundreds of HLA-B alleles have been described

Supplied As

200ug/ml of Ab Purified from Bioreactor Concentrate by Protein A/G. Prepared in 10mM PBS with 0.05% BSA & 0.05% azide. Also available WITHOUT BSA & azide at 1.0mg/ml.

Storage and Stability

Antibody with azide - store at 2 to 8°C. Antibody without azide - store at -20 to -80°C. Antibody is stable for 24 months. Non-hazardous. No MSDS required.

Research Areas

Cardiovascular, Cytokine Signaling, Dendritic Cell Marker, Immunology, Infectious Disease

Limitations and Warranty

This antibody is available for research use only and is not approved for use in diagnosis. There are no warranties, expressed or implied, which extend beyond this description. Company is not liable for any personal injury or economic loss resulting from this product.
