

## HLA-Aw32 & HLA-A25 (MHC I) Antibody

Mouse Monoclonal Antibody [Clone CATA-1]

| Catalog No      | Format  | Size   |
|-----------------|---|--------|
| 3105-MSM4-P0    | Purified Ab with BSA and Azide at 200ug/ml    | 20 ug  |
| 3105-MSM4-P1    | Purified Ab with BSA and Azide at 200ug/ml    | 100 ug |
| 3105-MSM4-P1ABX | Purified Ab WITHOUT BSA and Azide at 1.0mg/ml | 100 ug |

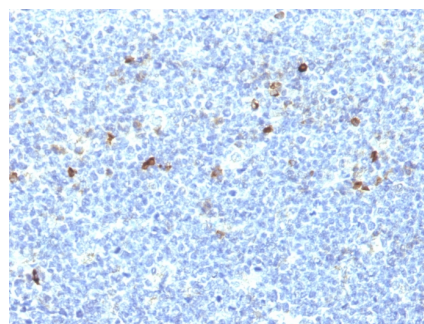
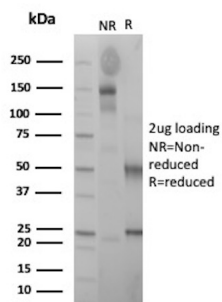
| Applications               | Tested Dillution    | Note  |
|----------------------------|---------------------|---|
| Flow Cytometry (Flow)      | 1-2ug/million cells |   |
| Immunofluorescence (IF)    | 1-3ug/ml            |   |
| Immunohistochemistry (IHC) | 1-2ug/ml            | 30 min at RT. Staining of formalin-fixed tissues requires heating tissue sections in 10mM Tris with 1mM EDTA, pH 9.0, for 45 min at 95°C followed by cooling at RT for 20 minutes |

### Product Details

|                        |  |
|------------------------|--|
| Clone                  | CATA-1   |
| Gene Name              | HLA-B  |
| Immunogen              | Normal human peripheral blood lymphocytes of phenotype A1, Aw32, B7, B37, Cw-, Cw-, DR2, DRw10 |
| Host                   | Mouse  |
| Clonality              | Monoclonal   |
| Isotype / Light Chain  | IgG2a / Kappa  |
| Mol. Weight of Antigen | ~41kDa   |
| Cellular Localization  | Cell membrane, Endoplasmic reticulum membrane  |
| Species Reactivity     | Human  |
| Positive Control       | THP-1 and Jurkat cells. Tonsil or lymph node.  |

*\*Optimal dilution for a specific application should be determined.*

### Product Images for HLA-Aw32 & HLA-A25 (MHC I) Antibody



SDS-PAGE Analysis of Purified MHC I Mouse Monoclonal Antibody (CATA-1). Confirmation of Purity and Integrity of Antibody.

Formalin-fixed, paraffin-embedded human Tonsil stained with MHC I Monoclonal Antibody (CATA-1).

### Specificity & Comments

This MAb reacts with cells bearing HLA-A25 or HLA-Aw32 antigens. In addition, a reaction was observed with a cell of phenotype A2, Aw31; B17, Bw49. HLA-A, with HLA-B and HLA-C, belongs to major histocompatibility complex (MHC) class I antigens and expresses constitutively on all nucleated cells. HLA system comprises closely linked genes controlling highly polymorphic proteins involved in the presentation of peptides to the T-cell receptor, inhibition of NK cell cytotoxicity, and rejection of tissue allotransplantation. Specific alleles at HLA loci are associated with diseases. This MAb is specifically applicable for typing peripheral T cells for the antigens HLA-A25 and HLA-Aw32.

---

### Limitations and Warranty

This antibody is available for research use only and is not approved for use in diagnosis. There are no warranties, expressed or implied, which extend beyond this description. Company is not liable for any personal injury or economic loss resulting from this product.

---

### Supplied As

200ug/ml of Ab Purified from Bioreactor Concentrate by Protein A/G. Prepared in 10mM PBS with 0.05% BSA & 0.05% azide. Also available WITHOUT BSA & azide at 1.0mg/ml.

---

### Storage and Stability

Antibody with azide - store at 2 to 8°C. Antibody without azide - store at -20 to -80°C. Antibody is stable for 24 months. Non-hazardous. No MSDS required.

---

### Research Areas

Cytokine Signaling, Dendritic Cell Marker, Immunology, Infectious Disease, Mesenchymal Stem Cell Differentiation

---